

For Research Use Only

TADA1L Recombinant antibody, PBS Only (Capture)

Catalog Number: 83641-4-PBS



Basic Information

Catalog Number: 83641-4-PBS	GenBank Accession Number: BC015401	Purification Method: Protein A purification
Size: 100ug, Concentration: 1 mg/ml by Nanodrop;	GeneID (NCBI): 117143	CloneNo.: 240637F7
Source: Rabbit	UNIPROT ID: Q96BN2	
Isotype: IgG	Full Name: transcriptional adaptor 1 (HF11 homolog, yeast)-like	
Immunogen Catalog Number: AG14118	Calculated MW: 335 aa, 37 kDa	
	Observed MW: 37-40 kDa	

Applications

Tested Applications:
WB, IF/ICC, FC (Intra), Cytometric bead array, Indirect ELISA

Species Specificity:
human, mouse, rat

Product Information

83641-4-PBS targets TADA1L as part of a matched antibody pair.

MP00624-1: 83641-4-PBS capture and 83641-5-PBS detection (validated in Cytometric bead array)

Unconjugated rabbit recombinant monoclonal antibody in PBS only (BSA and azide free) storage buffer at a concentration of 1 mg/mL, ready for conjugation. Created using Proteintech's proprietary in-house recombinant technology. Recombinant production enables unrivalled batch-to-batch consistency, easy scale-up, and future security of supply.

This conjugation ready format makes antibodies ideal for use in many applications including: ELISAs, multiplex assays requiring matched pairs, mass cytometry, and multiplex imaging applications. Antibody use should be optimized by the end user for each application and assay.

Background Information

The function of TADA1L has not been widely studied, and is yet to be fully elucidated. It probably involved in transcriptional regulation.

Storage

Storage:
Store at -80°C.
Storage Buffer:
PBS Only

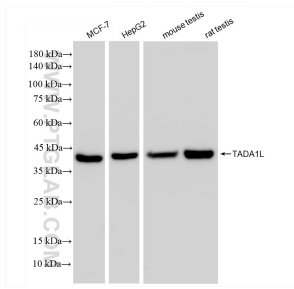
For technical support and original validation data for this product please contact:

T: 1 (888) 4PTGLAB (1-888-478-4522) (toll free in USA), or 1(312) 455-8498 (outside USA)

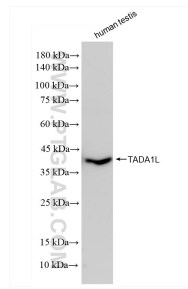
E: proteintech@ptglab.com
W: ptglab.com

This product is exclusively available under Proteintech Group brand and is not available to purchase from any other manufacturer.

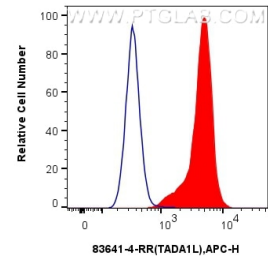
Selected Validation Data



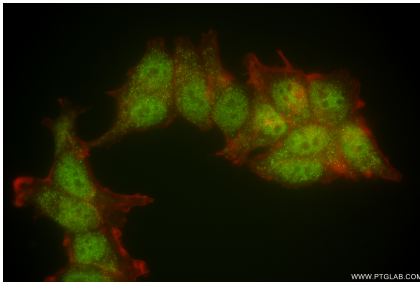
Various lysates were subjected to SDS PAGE followed by western blot with 83641-4-RR (TADA1L antibody) at dilution of 1:5000 incubated at room temperature for 1.5 hours. This data was developed using the same antibody clone with 83641-4-PBS in a different storage buffer formulation.



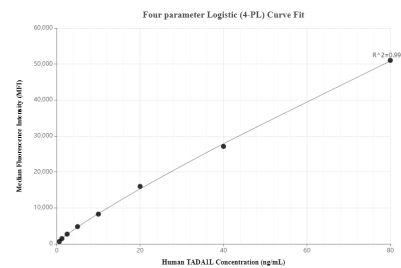
human testis tissue were subjected to SDS PAGE followed by western blot with 83641-4-RR (TADA1L antibody) at dilution of 1:5000 incubated at room temperature for 1.5 hours. This data was developed using the same antibody clone with 83641-4-PBS in a different storage buffer formulation.



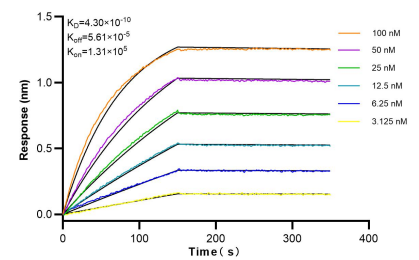
1×10^6 HepG2 cells were intracellularly stained with 0.25 ug Tada1l Recombinant Antibody (83641-4-RR, Clone:240637F7) and APC-Conjugated AffiniPure Goat Anti-Rabbit IgG(H+L)(red), or 0.25 ug Isotype Control (blue). Cells were fixed and permeabilized with Transcription Factor Staining Buffer Kit (PF00011). This data was developed using the same antibody clone with 83641-4-PBS in a different storage buffer formulation.



Immunofluorescent analysis of (4% PFA) fixed MCF-7 cells using TADA1L antibody (83641-4-RR, Clone: 240637F7) at dilution of 1:800 and CoraLite@488-Conjugated Goat Anti-Rabbit IgG(H+L) (SA00013-2), CL594-Phalloidin (red). This data was developed using the same antibody clone with 83641-4-PBS in a different storage buffer formulation.



Cytometric bead array standard curve of MP00624-1, TADA1L Recombinant Matched Antibody Pair, PBS Only. Capture antibody: 83641-4-PBS. Detection antibody: 83641-5-PBS. Standard: Ag14118. Range: 0.625-80 ng/mL.



Bi-layer interferometry (BLI) kinetic assays of 83641-4-RR against Human TADA1L were performed. The affinity constant is 0.43 nM.