

For Research Use Only

CDK2 Recombinant antibody, PBS Only

Catalog Number:83635-5-PBS



Basic Information

Catalog Number: 83635-5-PBS	GenBank Accession Number: BC003065	Purification Method: Protein A purification
Size: 100ug, Concentration: 1 mg/ml by Nanodrop;	GeneID (NCBI): 1017	CloneNo.: 240580A6
Source: Rabbit	UNIPROT ID: P24941	
Isotype: IgG	Full Name: cyclin-dependent kinase 2	
Immunogen Catalog Number: AG17133	Calculated MW: 298 aa, 34 kDa	
	Observed MW: 30 kDa	

Applications

Tested Applications:
WB, IF/ICC, FC (Intra), Indirect ELISA

Species Specificity:
human

Background Information

CDK2(Cyclin-dependent kinase 2) is also named as CDKN2 and belongs to the protein kinase superfamily. It is dispensable for myelination but is important for adult oligodendrocyte progenitor cell renewal, and could be one of the underlying mechanisms that drive adult progenitors to differentiate and thus regenerate myelin(PMID:21502361). G2 phase CCNA1/CDK2 controls the timing of entry into mitosis by controlling the subsequent activation of CCNB/CDK1, but also has an unexpected role in coordinating the activation of CCNB/CDK1 at the centrosome and in the nucleus(PMID:18372919).

Storage

Storage:
Store at -80°C.
Storage Buffer:
PBS Only

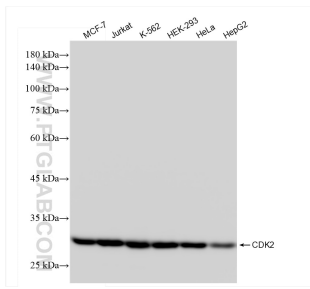
For technical support and original validation data for this product please contact:

T: 1 (888) 4PTGLAB (1-888-478-4522) (toll free in USA), or 1(312) 455-8498 (outside USA)

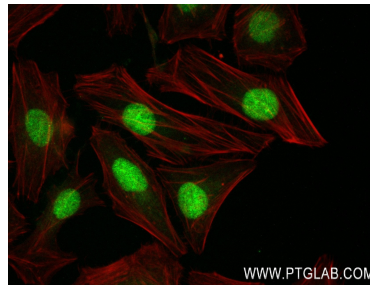
E: proteintech@ptglab.com
W: ptglab.com

This product is exclusively available under Proteintech Group brand and is not available to purchase from any other manufacturer.

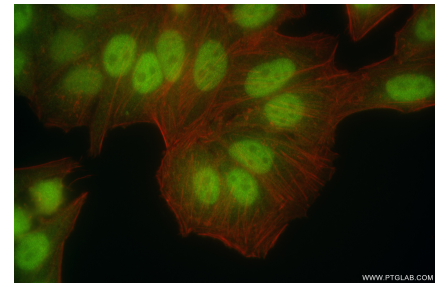
Selected Validation Data



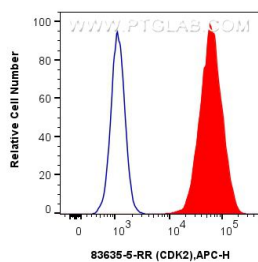
Various lysates were subjected to SDS PAGE followed by western blot with 83635-5-RR (CDK2 antibody) at dilution of 1:10000 incubated at room temperature for 1.5 hours. This data was developed using the same antibody clone with 83635-5-PBS in a different storage buffer formulation.



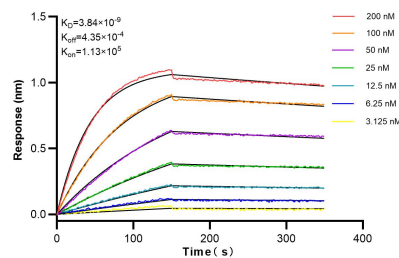
Immunofluorescent analysis of (4% PFA) fixed HeLa cells using CDK2 antibody (83635-5-RR, Clone: 240580A6) at dilution of 1:250 and CoraLite® 488-Conjugated AffiniPure Goat Anti-Rabbit IgG(H+L) (SA00013-2), CL594-Phalloidin (red). This data was developed using the same antibody clone with 83635-5-PBS in a different storage buffer formulation.



Immunofluorescent analysis of (4% PFA) fixed HepG2 cells using CDK2 antibody (83635-5-RR, Clone: 240580A6) at dilution of 1:400 and CoraLite® 488-Conjugated Goat Anti-Rabbit IgG(H+L) (SA00013-2), CL594-Phalloidin (red). This data was developed using the same antibody clone with 83635-5-PBS in a different storage buffer formulation.



1×10^6 HeLa cells were intracellularly stained with 0.25 μ g CDK2 Recombinant antibody (83635-5-RR, Clone:240580A6) and APC-Conjugated Goat Anti-Rabbit IgG(H+L)(red), or 0.25 μ g Isotype Control (blue). Cells were fixed and permeabilized with True-Nuclear Transcription Factor Buffer Set. This data was developed using the same antibody clone with 83635-5-PBS in a different storage buffer formulation.



Biolayer interferometry (BLI) kinetic assays of 83635-5-RR against Human CDK2 were performed. The affinity constant is 3.84 nM.