

For Research Use Only

# CDK2 Recombinant antibody

Catalog Number:83635-2-RR



## Basic Information

|  |  |   |
|--|--|---|
| <b>Catalog Number:</b><br>83635-2-RR                           | <b>GenBank Accession Number:</b><br>BC003065   | <b>Purification Method:</b><br>Protein A purification                                     |
| <b>Size:</b><br>100ul , Concentration: 1000 ug/ml by Nanodrop; | <b>GeneID (NCBI):</b><br>1017                  | <b>CloneNo.:</b><br>240580G11   |
| <b>Source:</b><br>Rabbit                                       | <b>UNIPROT ID:</b><br>P24941                   | <b>Recommended Dilutions:</b><br>WB 1:5000-1:50000<br>IHC 1:50-1:500<br>IF/ICC 1:50-1:500 |
| <b>Isotype:</b><br>IgG   | <b>Full Name:</b><br>cyclin-dependent kinase 2 |   |
| <b>Immunogen Catalog Number:</b><br>AG17133                    | <b>Calculated MW:</b><br>298 aa, 34 kDa        |   |
|  | <b>Observed MW:</b><br>30-33 kDa               |   |

## Applications

|  |  |
|--|--|
| <b>Tested Applications:</b><br>WB, IHC, IF/ICC, FC (Intra), ELISA  | <b>Positive Controls:</b><br>WB : MCF-7 cells, K-562 cells, HEK-293 cells, HeLa cells, HepG2 cells, C6 cells<br>IHC : human ovarian cancer,<br>IF/ICC : HepG2 cells, |
| <b>Species Specificity:</b><br>human, rat  |  |
| <b>Note-IHC: suggested antigen retrieval with TE buffer pH 9.0; (*) Alternatively, antigen retrieval may be performed with citrate buffer pH 6.0</b> |  |

## Background Information

CDK2(Cyclin-dependent kinase 2) is also named as CDKN2 and belongs to the protein kinase superfamily,CMGC Ser/Thr protein kinase family, CDC2/CDKX subfamily.It is involved in the control of the cell cycle; essential for meiosis, but dispensable for mitosis.It has 2 isoforms produced by alternative splicing.

## Storage

**Storage:**  
Store at -20°C. Stable for one year after shipment.  
**Storage Buffer:**  
PBS with 0.02% sodium azide and 50% glycerol pH 7.3.  
Aliquoting is unnecessary for -20°C storage

\*\*\* 20ul sizes contain 0.1% BSA

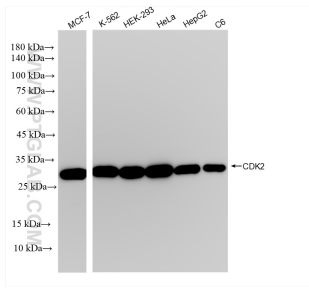
For technical support and original validation data for this product please contact:

T: 1 (888) 4PTGLAB (1-888-478-4522) (toll free in USA), or 1(312) 455-8498 (outside USA)

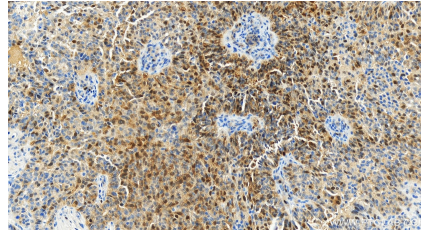
E: proteintech@ptglab.com  
W: ptglab.com

This product is exclusively available under Proteintech Group brand and is not available to purchase from any other manufacturer.

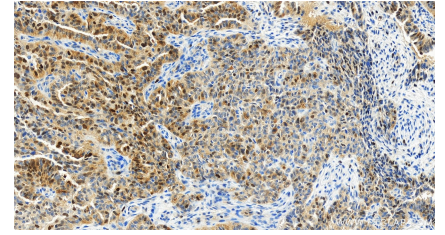
## Selected Validation Data



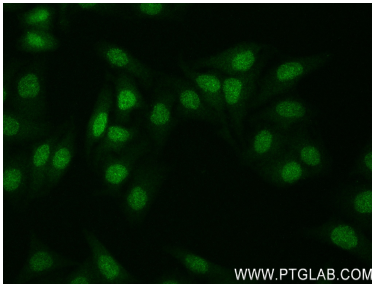
Various lysates were subjected to SDS PAGE followed by western blot with 83635-2-RR (CDK2 antibody) at dilution of 1:10000 incubated at room temperature for 1.5 hours.



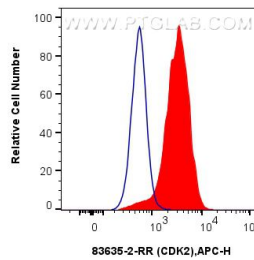
Immunohistochemical analysis of paraffin-embedded human ovarian cancer slide using 83635-2-RR (CDK2 antibody) at dilution of 1:200 (under 20x lens). Heat mediated antigen retrieval with Tris-EDTA buffer (pH 9.0).



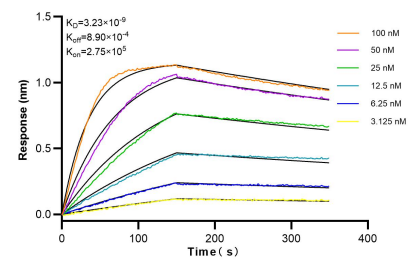
Immunohistochemical analysis of paraffin-embedded human ovarian cancer slide using 83635-2-RR (CDK2 antibody) at dilution of 1:200 (under 20x lens). Heat mediated antigen retrieval with Tris-EDTA buffer (pH 9.0).



Immunofluorescent analysis of (4% PFA) fixed HepG2 cells using CDK2 antibody (83635-2-RR, Clone: 240580G11) at dilution of 1:200 and CoraLite®488-Conjugated AffiniPure Goat Anti-Rabbit IgG(H+L) (SA00013-2).



$1 \times 10^6$  HeLa cells were intracellularly stained with 0.25 ug CDK2 Recombinant antibody (83635-2-RR, Clone:240580G11) and APC-Conjugated AffiniPure Goat Anti-Rabbit IgG(H+L) (red), or 0.25 ug Isotype Control (blue). Cells were fixed and permeabilized with True-Nuclear Transcription Factor Buffer Set.



Biolyer interferometry (BLI) kinetic assays of 83635-2-RR against Human CDK2 were performed. The affinity constant is 3.23 nM.