

For Research Use Only

# HDAC1 Recombinant antibody, PBS Only (Detector)

Catalog Number:83624-4-PBS



## Basic Information

<b>Catalog Number:</b> 83624-4-PBS	<b>GenBank Accession Number:</b> BC000301	<b>Purification Method:</b> Protein A purification
<b>Size:</b> 100ug , Concentration: 1 mg/ml by Nanodrop;	<b>GeneID (NCBI):</b> 3065	<b>CloneNo.:</b> 240614G4
<b>Source:</b> Rabbit	<b>UNIPROT ID:</b> Q13547	
<b>Isotype:</b> IgG	<b>Full Name:</b> histone deacetylase 1	
<b>Immunogen Catalog Number:</b> AG0256	<b>Calculated MW:</b> 55 kDa	

## Applications

**Tested Applications:**  
Cytometric bead array, Sandwich ELISA, Indirect ELISA, Sample test

**Species Specificity:**  
human

## Product Information

83624-4-PBS targets HDAC1 as part of a matched antibody pair:

MP00577-1: 83624-2-PBS capture and 83624-4-PBS detection (validated in Cytometric bead array, Sandwich ELISA)

MP00577-2: 83624-3-PBS capture and 83624-4-PBS detection (validated in Cytometric bead array)

Unconjugated rabbit recombinant monoclonal antibody in PBS only (BSA and azide free) storage buffer at a concentration of 1 mg/mL, ready for conjugation. Created using Proteintech's proprietary in-house recombinant technology. Recombinant production enables unrivalled batch-to-batch consistency, easy scale-up, and future security of supply.

This conjugation ready format makes antibodies ideal for use in many applications including: ELISAs, multiplex assays requiring matched pairs, mass cytometry, and multiplex imaging applications. Antibody use should be optimized by the end user for each application and assay.

## Storage

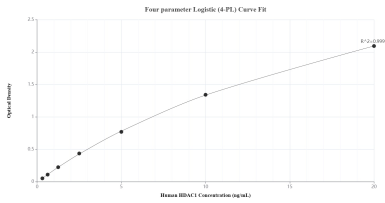
**Storage:**  
Store at -80°C.

**Storage Buffer:**  
PBS Only

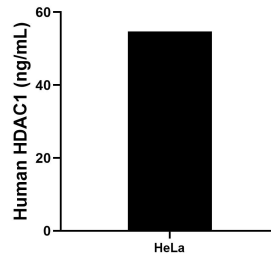
For technical support and original validation data for this product please contact:  
T: 1 (888) 4PTGLAB (1-888-478-4522) (toll free in USA), or 1(312) 455-8498 (outside USA)      E: [proteintech@ptglab.com](mailto:proteintech@ptglab.com)  
W: [ptglab.com](http://ptglab.com)

**This product is exclusively available under Proteintech Group brand and is not available to purchase from any other manufacturer.**

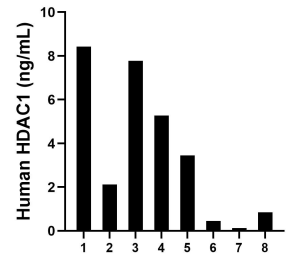
## Selected Validation Data



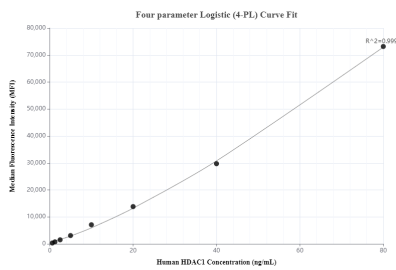
Sandwich ELISA standard curve of MP00577-1, Human HDAC1 Recombinant Matched Antibody Pair - PBS only. 83624-2-PBS was coated to a plate as the capture antibody and incubated with serial dilutions of standard Ag0256. 83624-4-PBS was HRP conjugated as the detection antibody. Range: 0.313-20 ng/mL



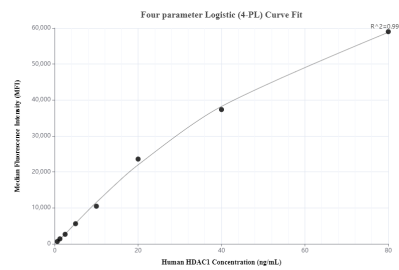
The mean HDAC1 concentration was determined to be 54.72 ng/mL in HeLa cell extract based on a 4.30 mg/mL extract load.



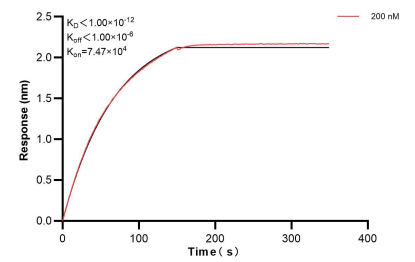
Serum of eight individual healthy human donors was measured. The HDAC1 concentration of detected samples was determined to be 3.56 ng/mL with a range of 0.13 - 8.43 ng/mL



Cytometric bead array standard curve of MP00577-1, HDAC1 Recombinant Matched Antibody Pair, PBS Only. Capture antibody: 83624-2-PBS. Detection antibody: 83624-4-PBS. Standard: Ag0256. Range: 0.625-80 ng/mL



Cytometric bead array standard curve of MP00577-2, HDAC1 Recombinant Matched Antibody Pair, PBS Only. Capture antibody: 83624-3-PBS. Detection antibody: 83624-4-PBS. Standard: Ag0256. Range: 0.625-80 ng/mL



Bi-layer interferometry (BLI) kinetic assay of 83624-4-PBS against Human HDAC1 was performed. The affinity constant is below 1 pM.