

For Research Use Only

# CUL3 Recombinant antibody

Catalog Number:83619-5-RR



## Basic Information

<b>Catalog Number:</b> 83619-5-RR	<b>GenBank Accession Number:</b> BC039598	<b>Purification Method:</b> Protein A purification
<b>Size:</b> 100ul , Concentration: 1000 ug/ml by Nanodrop;	<b>GeneID (NCBI):</b> 8452	<b>CloneNo.:</b> 240534C7
<b>Source:</b> Rabbit	<b>UNIPROT ID:</b> Q13618	<b>Recommended Dilutions:</b> WB 1:5000-1:50000
<b>Isotype:</b> IgG	<b>Full Name:</b> cullin 3	
<b>Immunogen Catalog Number:</b> AG1555	<b>Calculated MW:</b> 89 kDa	
	<b>Observed MW:</b> 80-89 kDa	

## Applications

<b>Tested Applications:</b> WB, ELISA	<b>Positive Controls:</b> WB : LNCaP cells, SH-SY5Y cells, PC-12 cells
<b>Species Specificity:</b> human	

## Background Information

Cullin-RING-based BCR (BTB-CUL3-RBX1) E3 ligase are the largest family of ubiquitin ligases which mediate the ubiquitination and subsequent proteasomal degradation of target proteins. One of seven cullin proteins serves as a scaffold protein for the assembly of the multisubunit ubiquitin ligase complex. CUL3 (Cullin-3) ubiquitin ligase complex targets multiple substrate for ubiquitination including cyclin E and of cyclin D1. Defects in CUL3 are the cause of Pseudohypaldosteronism type 2E (PHA2E) characterized by severe hypertension, hyperkalemia, hyperchloremia, hyperchloremic metabolic acidosis, and correction of physiologic abnormalities by thiazide diuretics.

## Storage

**Storage:**  
Store at -20°C. Stable for one year after shipment.  
**Storage Buffer:**  
PBS with 0.02% sodium azide and 50% glycerol pH 7.3.  
Aliquoting is unnecessary for -20°C storage

\*\*\* 20ul sizes contain 0.1% BSA

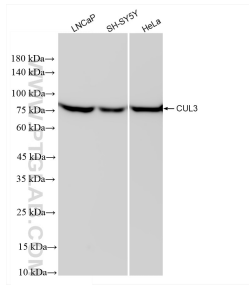
For technical support and original validation data for this product please contact:

T: 1 (888) 4PTGLAB (1-888-478-4522) (toll free in USA), or 1(312) 455-8498 (outside USA)

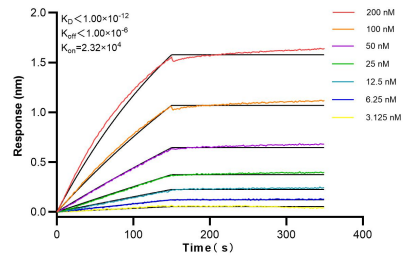
E: [proteintech@ptglab.com](mailto:proteintech@ptglab.com)  
W: [ptglab.com](http://ptglab.com)

This product is exclusively available under Proteintech Group brand and is not available to purchase from any other manufacturer.

## Selected Validation Data



Various lysates were subjected to SDS PAGE followed by western blot with 83619-5-RR (CUL3 antibody) at dilution of 1:20000 incubated at room temperature for 1.5 hours.



Biolayer interferometry (BLI) kinetic assays of 83619-5-RR against Human CUL3 were performed. The affinity constant is below 1 pM.