

For Research Use Only

CUL3 Recombinant antibody, PBS Only (Capture/Detector)

Catalog Number:83619-1-PBS



Basic Information

Catalog Number: 83619-1-PBS	GenBank Accession Number: BC039598	Purification Method: Protein A purification
Size: 100ug , Concentration: 1 mg/ml by Nanodrop;	GeneID (NCBI): 8452	CloneNo.: 240534A6
Source: Rabbit	UNIPROT ID: Q13618	
Isotype: IgG	Full Name: cullin 3	
Immunogen Catalog Number: AG1555	Calculated MW: 89 kDa	

Applications

Tested Applications:
Cytometric bead array, Sandwich ELISA, Indirect ELISA,
Sample test

Species Specificity:
human

Product Information

83619-1-PBS targets CUL3 as part of a matched antibody pair:

MP00599-1: 83619-1-PBS capture and 83619-2-PBS detection (validated in Cytometric bead array)

MP00599-2: 83619-4-PBS capture and 83619-1-PBS detection (validated in Cytometric bead array)

MP00599-3: 83619-1-PBS capture and 83619-3-PBS detection (validated in Cytometric bead array)

MP00599-4: 83619-7-PBS capture and 83619-1-PBS detection (validated in Sandwich ELISA)

Unconjugated rabbit recombinant monoclonal antibody in PBS only (BSA and azide free) storage buffer at a concentration of 1 mg/mL, ready for conjugation. Created using Proteintech's proprietary in-house recombinant technology. Recombinant production enables unrivalled batch-to-batch consistency, easy scale-up, and future security of supply.

This conjugation ready format makes antibodies ideal for use in many applications including: ELISAs, multiplex assays requiring matched pairs, mass cytometry, and multiplex imaging applications. Antibody use should be optimized by the end user for each application and assay.

Storage

Storage:
Store at -80°C.
Storage Buffer:
PBS Only

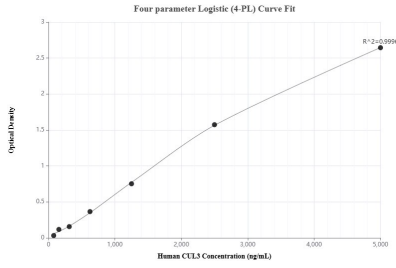
For technical support and original validation data for this product please contact:

T: 1 (888) 4PTGLAB (1-888-478-4522) (toll free
in USA), or 1(312) 455-8498 (outside USA)

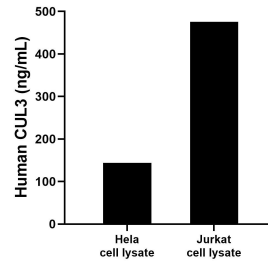
E: proteintech@ptglab.com
W: ptglab.com

This product is exclusively available under Proteintech Group brand and is not available to purchase from any other manufacturer.

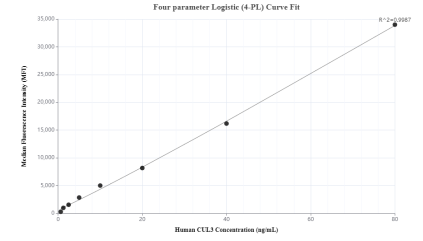
Selected Validation Data



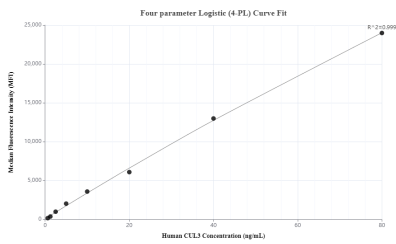
Sandwich ELISA standard curve of MP00599-4, Human CUL3 Recombinant Matched Antibody Pair - PBS only. 83619-7-PBS was coated to a plate as the capture antibody and incubated with serial dilutions of standard Ag1555. 83619-1-PBS was HRP conjugated as the detection antibody. Range: 1.25-80 ng/mL



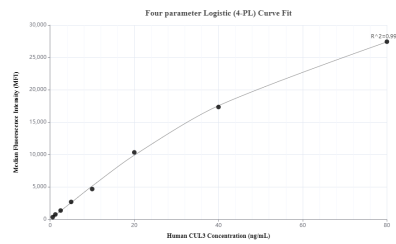
HeLa and Jurkat cell lysates were measured. The human CUL3 concentration of detected samples was determined to be 144.2 ng/mL (based on a 1.2 mg/mL extract load) in HeLa cell lysate and 475.5 ng/mL (based on a 1.0 mg/mL extract load) in Jurkat cell lysate.



Cytometric bead array standard curve of MP00599-1, CUL3 Recombinant Matched Antibody Pair, PBS Only. Capture antibody: 83619-1-PBS. Detection antibody: 83619-2-PBS. Standard: Ag1555. Range: 0.625-80 ng/mL



Cytometric bead array standard curve of MP00599-2, CUL3 Recombinant Matched Antibody Pair, PBS Only. Capture antibody: 83619-4-PBS. Detection antibody: 83619-1-PBS. Standard: Ag1555. Range: 0.625-80 ng/mL



Cytometric bead array standard curve of MP00599-3, CUL3 Recombinant Matched Antibody Pair, PBS Only. Capture antibody: 83619-1-PBS. Detection antibody: 83619-3-PBS. Standard: Ag1555. Range: 0.625-80 ng/mL