

For Research Use Only

# ZBTB7A Recombinant antibody, PBS Only

Catalog Number: 83616-5-PBS

Featured Product



## Basic Information

**Catalog Number:**

83616-5-PBS

**Size:**

100ug, Concentration: 1 mg/ml by Nanodrop;

**Source:**

Rabbit

**Isotype:**

IgG

**GenBank Accession Number:**

BC113511

**GeneID (NCBI):**

51341

**UNIPROT ID:**

O95365

**Full Name:**

zinc finger and BTB domain containing 7A

**Calculated MW:**

61 kDa

**Observed MW:**

61 kDa, 75-80 kDa

**Purification Method:**

Protein A purification

**CloneNo.:**

240555A6

## Applications

**Tested Applications:**

WB, IHC, IF/ICC, FC (Intra), ELISA

**Species Specificity:**

human

## Background Information

ZBTB7A, also named as LRF, FBI1, FBI-1, pokemon, ZBTB7, ZNF857A and DKFZp5470146, a member of the POK (POZ and Krüppel) family of transcription factors, plays a role in differentiation, oncogenesis, and adipogenesis (PMID: 35798238). ZBTB7A is involved in the instruction of early lymphoid progenitors to develop into B lineage by repressing T-cell instructive Notch signals. ZBTB7A is widely expressed in normal thymus and it is aberrantly overexpressed in human cancers (PMID: 28942243). ZBTB7A has 10 potential sumoylation sites located at lysine 61, 354, 371, 379, 383, 396, 486, 487, 536 and 539 (PMID: 20471975, 19471103). ZBTB7A has a predicted molecular weight of 61 kDa and the 75-80-kDa band could be the sumoylated form.

## Storage

**Storage:**

Store at -80°C.

**Storage Buffer:**

PBS Only

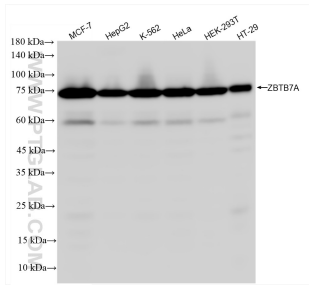
For technical support and original validation data for this product please contact:

T: 1 (888) 4PTGLAB (1-888-478-4522) (toll free in USA), or 1(312) 455-8498 (outside USA)

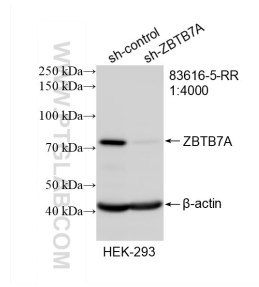
E: [proteintech@ptglab.com](mailto:proteintech@ptglab.com)  
W: [ptglab.com](http://ptglab.com)

This product is exclusively available under Proteintech Group brand and is not available to purchase from any other manufacturer.

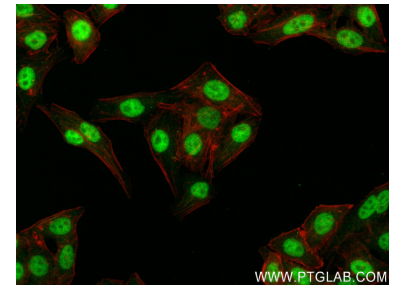
## Selected Validation Data



Various lysates were subjected to SDS PAGE followed by western blot with 83616-5-RR (ZBTB7A antibody) at dilution of 1:5000 incubated at room temperature for 1.5 hours. This data was developed using the same antibody clone with 83616-5-PBS in a different storage buffer formulation.



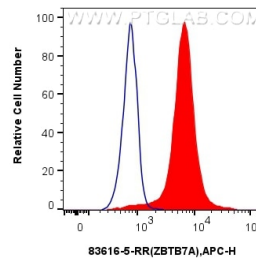
WB result of ZBTB7A antibody (83616-5-RR; 1:8000; incubated at room temperature for 1.5 hours) with sh-Control and sh-ZBTB7A transfected HEK-293 cells. This data was developed using the same antibody clone with 83616-5-PBS in a different storage buffer formulation.



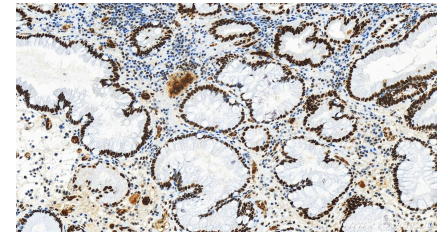
Immunofluorescent analysis of (4% PFA) fixed HepG2 cells using ZBTB7A antibody (83616-5-RR, Clone: 240555A6) at dilution of 1:200 and CoraLite@488-Conjugated AffiniPure Goat Anti-Rabbit IgG(H+L) (SA00013-2), CL594-Phalloidin (red). This data was developed using the same antibody clone with 83616-5-PBS in a different storage buffer formulation.



Immunofluorescent analysis of (4% PFA) fixed HepG2 cells using ZBTB7A antibody (83616-5-RR, Clone: 240555A6) at dilution of 1:200 and CoraLite@488-Conjugated AffiniPure Goat Anti-Rabbit IgG(H+L) (SA00013-2), CL594-Phalloidin (red). This data was developed using the same antibody clone with 83616-5-PBS in a different storage buffer formulation.



$1 \times 10^6$  HeLa cells were intracellularly stained with 0.25 ug ZBTB7A Recombinant antibody (83616-5-RR, Clone:240555A6) and APC-Conjugated AffiniPure Goat Anti-Rabbit IgG(H+L)(red), or 0.25 ug Isotype Control (blue). Cells were fixed and permeabilized with Transcription Factor Staining Buffer Kit (PF00011). This data was developed using the same antibody clone with 83616-5-PBS in a different storage buffer formulation.



Immunohistochemical analysis of paraffin-embedded human stomach cancer tissue slide using 83616-5-RR (ZBTB7A antibody) at dilution of 1:400 (under 20x lens). Heat mediated antigen retrieval with Tris-EDTA buffer(pH9). This data was developed using the same antibody clone with 83616-5-PBS in a different storage buffer formulation.