

For Research Use Only

# TRIM46 Recombinant antibody, PBS Only (Capture)

Catalog Number: 83614-2-PBS



## Basic Information

<b>Catalog Number:</b> 83614-2-PBS	<b>GenBank Accession Number:</b> BC069416	<b>Purification Method:</b> Protein A purification
<b>Size:</b> 100ug, Concentration: 1 mg/ml by Nanodrop;	<b>GeneID (NCBI):</b> 80128	<b>CloneNo.:</b> 240557E1
<b>Source:</b> Rabbit	<b>UNIPROT ID:</b> Q7Z4K8	
<b>Isotype:</b> IgG	<b>Full Name:</b> tripartite motif-containing 46	
<b>Immunogen Catalog Number:</b> AG15290	<b>Calculated MW:</b> 759 aa, 83 kDa	
	<b>Observed MW:</b> 83 kDa	

## Applications

**Tested Applications:**  
WB, IHC, IF/ICC, IF-P, FC (Intra), Cytometric bead array, Indirect ELISA

**Species Specificity:**  
human, mouse, rat

## Product Information

83614-2-PBS targets TRIM46 as part of a matched antibody pair:

MP00591-1: 83614-2-PBS capture and 83614-4-PBS detection (validated in Cytometric bead array)

MP00591-2: 83614-2-PBS capture and 83614-3-PBS detection (validated in Cytometric bead array)

Unconjugated rabbit recombinant monoclonal antibody in PBS only (BSA and azide free) storage buffer at a concentration of 1 mg/mL, ready for conjugation. Created using Proteintech's proprietary in-house recombinant technology. Recombinant production enables unrivalled batch-to-batch consistency, easy scale-up, and future security of supply.

This conjugation ready format makes antibodies ideal for use in many applications including: ELISAs, multiplex assays requiring matched pairs, mass cytometry, and multiplex imaging applications. Antibody use should be optimized by the end user for each application and assay.

## Background Information

Tripartite motif-containing protein 46 (TRIM46), a microtubule-associated protein, is involved in the formation of parallel microtubule bundles linked by cross-bridges in the proximal axon. Required for the uniform orientation and maintenance of the parallel microtubule fascicles, which are important for efficient cargo delivery and trafficking in axons. Thereby also required for proper axon specification, the establishment of neuronal polarity, and proper neuronal migration. The TRIM46 protein reported in previous studies includes the long isoform TRIM46L (83 kDa) and the short isoform TRIM46S (60 kDa).

## Storage

**Storage:**  
Store at -80°C.  
**Storage Buffer:**  
PBS Only

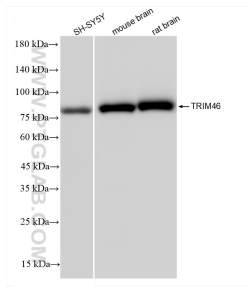
For technical support and original validation data for this product please contact:

T: 1 (888) 4PTGLAB (1-888-478-4522) (toll free in USA), or 1(312) 455-8498 (outside USA)

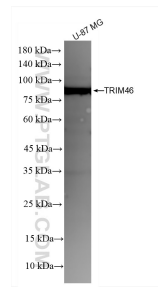
E: [proteintech@ptglab.com](mailto:proteintech@ptglab.com)  
W: [ptglab.com](http://ptglab.com)

**This product is exclusively available under Proteintech Group brand and is not available to purchase from any other manufacturer.**

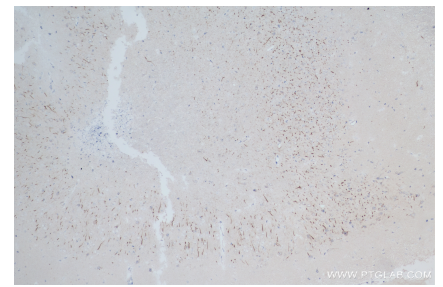
## Selected Validation Data



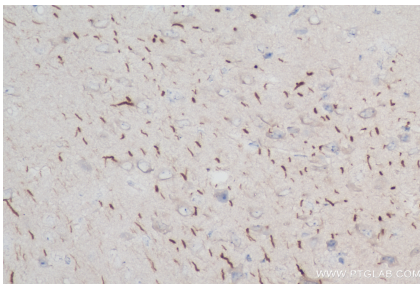
Various lysates were subjected to SDS PAGE followed by western blot with 83614-2-RR (TRIM46 antibody) at dilution of 1:10000 incubated at room temperature for 1.5 hours. This data was developed using the same antibody clone with 83614-2-PBS in a different storage buffer formulation.



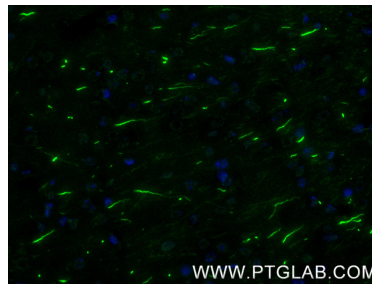
U-87 MG cells were subjected to SDS PAGE followed by western blot with 83614-2-RR (TRIM46 antibody) at dilution of 1:10000 incubated at room temperature for 1.5 hours. This data was developed using the same antibody clone with 83614-2-PBS in a different storage buffer formulation.



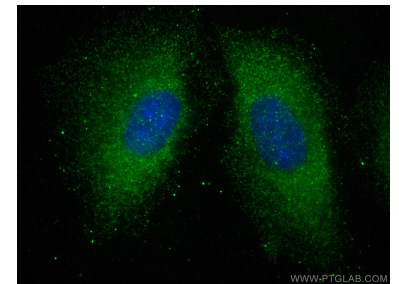
Immunohistochemical analysis of paraffin-embedded mouse brain tissue slide using 83614-2-RR (TRIM46 antibody) at dilution of 1:400 (under 10x lens). Heat mediated antigen retrieval with Tris-EDTA buffer (pH 9.0). This data was developed using the same antibody clone with 83614-2-PBS in a different storage buffer formulation.



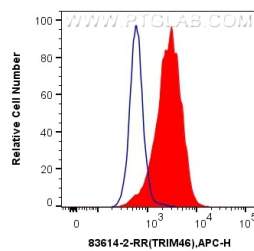
Immunohistochemical analysis of paraffin-embedded mouse brain tissue slide using 83614-2-RR (TRIM46 antibody) at dilution of 1:400 (under 40x lens). Heat mediated antigen retrieval with Tris-EDTA buffer (pH 9.0). This data was developed using the same antibody clone with 83614-2-PBS in a different storage buffer formulation.



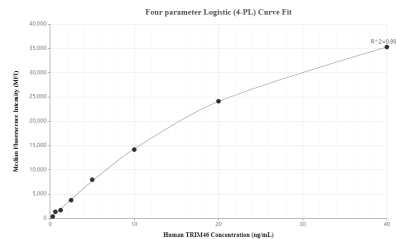
Immunofluorescent analysis of (4% PFA) fixed paraffin-embedded mouse brain tissue using TRIM46 antibody (83614-2-RR, Clone: 240557E1) at dilution of 1:200 and CoraLite® 488-Conjugated Goat Anti-Rabbit IgG(H+L) (SA00013-2). Heat mediated antigen retrieval with Tris-EDTA buffer (pH 9.0). This data was developed using the same antibody clone with 83614-2-PBS in a different storage buffer formulation.



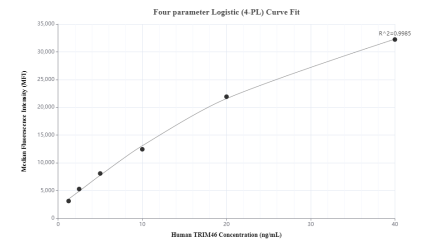
Immunofluorescent analysis of (-20°C Methanol) fixed A549 cells using TRIM46 antibody (83614-2-RR, Clone: 240557E1) at dilution of 1:400 and Multi-rAb CoraLite® Plus 488-Goat Anti-Rabbit Recombinant Secondary Antibody (H+L) (RGAR002). This data was developed using the same antibody clone with 83614-2-PBS in a different storage buffer formulation.



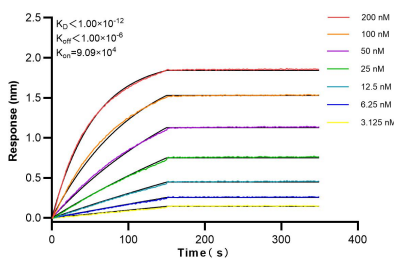
$1 \times 10^6$  HeLa cells were intracellularly stained with 0.25 ug TRIM46 Recombinant antibody (83614-2-RR, Clone:240557E1) and APC-Conjugated AffiniPure Goat Anti-Rabbit IgG(H+L)(red), or 0.25 ug Isotype Control (blue). Cells were fixed with 4% PFA and permeabilized with Flow Cytometry Perm Buffer (PF00011-C). This data was developed using the same antibody clone with 83614-2-PBS in a different storage buffer formulation.



Cytometric bead array standard curve of MP00591-1, TRIM46 Recombinant Matched Antibody Pair, PBS Only. Capture antibody: 83614-2-PBS. Detection antibody: 83614-4-PBS. Standard: Ag15290. Range: 0.313-40 ng/mL



Cytometric bead array standard curve of MP00591-2, TRIM46 Recombinant Matched Antibody Pair, PBS Only. Capture antibody: 83614-2-PBS. Detection antibody: 83614-3-PBS. Standard: Ag15290. Range: 1.25-40 ng/mL



Bi-layer interferometry (BLI) kinetic assays of 83614-2-RR against Human TRIM46 were performed. The affinity constant is below 1 pM.