

For Research Use Only

AP1M1 Recombinant antibody

Catalog Number: 83613-6-RR

Featured Product



Basic Information

| | | |
|--|--|--|
| Catalog Number: 83613-6-RR | GenBank Accession Number: BC017469 | Purification Method: Protein A purification |
| Size: 100ul , Concentration: 1000 ug/ml by Nanodrop; | GeneID (NCBI): 8907 | CloneNo.: 240553H3 |
| Source: Rabbit | UNIPROT ID: Q9BXS5 | Recommended Dilutions: WB 1:5000-1:50000 IHC 1:500-1:2000 |
| Isotype: IgG | Full Name: adaptor-related protein complex 1, mu 1 subunit | |
| Immunogen Catalog Number: AG2757 | Calculated MW: 423 aa, 49 kDa | |
| | Observed MW: 49 kDa | |

Applications

Tested Applications:
WB, IHC, FC (Intra), ELISA

Species Specificity:
human, mouse, rat

Note-IHC: suggested antigen retrieval with TE buffer pH 9.0; (*) Alternatively, antigen retrieval may be performed with citrate buffer pH 6.0

Positive Controls:

WB : HepG2 cells, HEK-293 cells, mouse testis tissue, PC-3 cells, K-562 cells, Jurkat cells, rat testis tissue

IHC : mouse skin tissue,

Background Information

AP1M1, also named as CLTNM, Mu-adaptin 1 and Clathrin coat assembly protein AP47, belongs to the adaptor complexes medium subunit family. It is a subunit of clathrin-associated adaptor protein complex 1 that plays a role in protein sorting in the trans-Golgi network (TGN) and endosomes. The AP complexes mediate the recruitment of clathrin to membranes and the recognition of sorting signals within the cytosolic tails of transmembrane cargo molecules.

Storage

Storage:
Store at -20°C. Stable for one year after shipment.
Storage Buffer:
PBS with 0.02% sodium azide and 50% glycerol pH 7.3.
Aliquoting is unnecessary for -20°C storage

***** 20ul sizes contain 0.1% BSA**

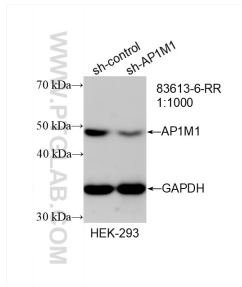
For technical support and original validation data for this product please contact:

T: 1 (888) 4PTGLAB (1-888-478-4522) (toll free in USA), or 1(312) 455-8498 (outside USA)

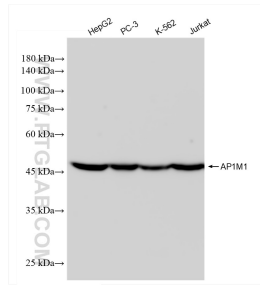
E: proteintech@ptglab.com
W: ptglab.com

This product is exclusively available under Proteintech Group brand and is not available to purchase from any other manufacturer.

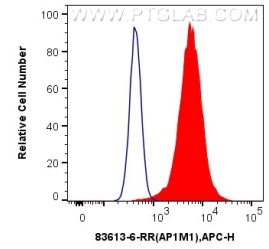
Selected Validation Data



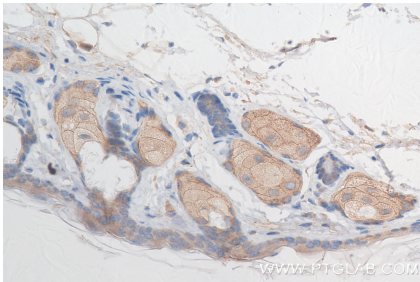
WB result of AP1M1 antibody (83613-6-RR; 1:1000; incubated at room temperature for 1.5 hours) with sh-Control and sh-AP1M1 transfected HEK-293 cells.



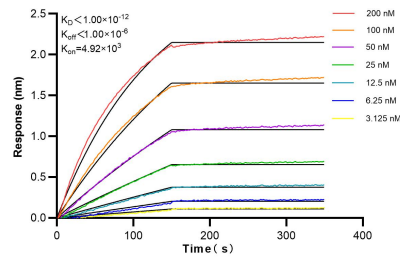
Various lysates were subjected to SDS PAGE followed by western blot with 83613-6-RR (AP1M1 antibody) at dilution of 1:10000 incubated at room temperature for 1.5 hours.



1×10^6 HeLa cells were intracellularly stained with 0.25 ug AP1M1 Recombinant antibody (83613-6-RR, Clone:240553H3) and APC-Conjugated AffiniPure Goat Anti-Rabbit IgG(H+L)(red), or 0.25 ug Isotype Control (blue). Cells were fixed with 4% PFA and permeabilized with Flow Cytometry Perm Buffer (PF00011-C).



Immunohistochemical analysis of paraffin-embedded mouse skin tissue slide using 83613-6-RR (AP1M1 antibody) at dilution of 1:1000 (under 40x lens). Heat mediated antigen retrieval with Tris-EDTA buffer (pH 9.0).



Biolayer interferometry (BLI) kinetic assays of 83613-6-RR against Human AP1M1 were performed. The affinity constant is below 1 pM.