

For Research Use Only

AP1M1 Recombinant antibody, PBS Only

Catalog Number: 83613-6-PBS

Featured Product



Basic Information

Catalog Number: 83613-6-PBS	GenBank Accession Number: BC017469	Purification Method: Protein A purification
Size: 100ug, Concentration: 1 mg/ml by Nanodrop;	GeneID (NCBI): 8907	CloneNo.: 240553H3
Source: Rabbit	UNIPROT ID: Q9BX55	
Isotype: IgG	Full Name: adaptor-related protein complex 1, mu 1 subunit	
Immunogen Catalog Number: AG2757	Calculated MW: 423 aa, 49 kDa	
	Observed MW: 49 kDa	

Applications

Tested Applications:
WB, IHC, FC (Intra), ELISA

Species Specificity:
human, mouse, rat

Background Information

AP1M1, also named as CLTNM, Mu-adaptin 1 and Clathrin coat assembly protein AP47, belongs to the adaptor complexes medium subunit family. It is a subunit of clathrin-associated adaptor protein complex 1 that plays a role in protein sorting in the trans-Golgi network (TGN) and endosomes. The AP complexes mediate the recruitment of clathrin to membranes and the recognition of sorting signals within the cytosolic tails of transmembrane cargo molecules.

Storage

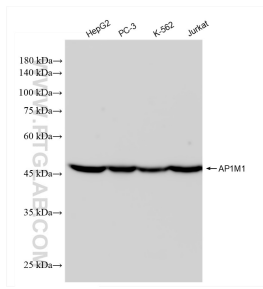
Storage:
Store at -80°C.

Storage Buffer:
PBS Only

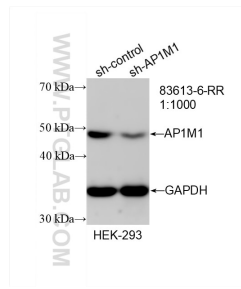
For technical support and original validation data for this product please contact:
T: 1 (888) 4PTGLAB (1-888-478-4522) (toll free in USA), or 1(312) 455-8498 (outside USA) E: proteintech@ptglab.com
W: ptglab.com

This product is exclusively available under Proteintech Group brand and is not available to purchase from any other manufacturer.

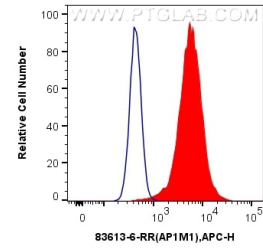
Selected Validation Data



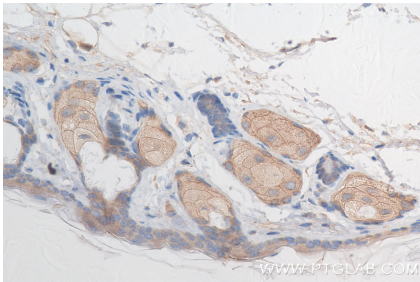
Various lysates were subjected to SDS PAGE followed by western blot with 83613-6-RR (AP1M1 antibody) at dilution of 1:10000 incubated at room temperature for 1.5 hours. This data was developed using the same antibody clone with 83613-6-PBS in a different storage buffer formulation.



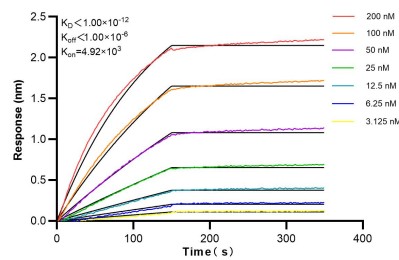
WB result of AP1M1 antibody (83613-6-RR; 1:1000; incubated at room temperature for 1.5 hours) with sh-Control and sh-AP1M1 transfected HEK-293 cells. This data was developed using the same antibody clone with 83613-6-PBS in a different storage buffer formulation.



1×10^6 HeLa cells were intracellularly stained with 0.25 μ g AP1M1 Recombinant antibody (83613-6-RR, Clone:240553H3) and APC-Conjugated AffiniPure Goat Anti-Rabbit IgG(H+L)(red), or 0.25 μ g Isotype Control (blue). Cells were fixed with 4% PFA and permeabilized with Flow Cytometry Perm Buffer (PF00011-C). This data was developed using the same antibody clone with 83613-6-PBS in a different storage buffer formulation.



Immunohistochemical analysis of paraffin-embedded mouse skin tissue slide using 83613-6-RR (AP1M1 antibody) at dilution of 1:1000 (under 40x lens). Heat mediated antigen retrieval with Tris-EDTA buffer (pH 9.0). This data was developed using the same antibody clone with 83613-6-PBS in a different storage buffer formulation.



Biolayer interferometry (BLI) kinetic assays of 83613-6-RR against Human AP1M1 were performed. The affinity constant is below 1 pM.