

For Research Use Only

ATM Recombinant antibody, PBS Only (Capture)

Catalog Number: 83608-6-PBS



Basic Information

Catalog Number: 83608-6-PBS	GenBank Accession Number: BC137169	Purification Method: Protein A purification
Size: 100ug , Concentration: 1 mg/ml by Nanodrop;	GeneID (NCBI): 472	CloneNo.: 240560F4
Source: Rabbit	UNIPROT ID: Q13315	
Isotype: IgG	Full Name: ataxia telangiectasia mutated	
Immunogen Catalog Number: AG25920		

Applications

Tested Applications:
Sandwich ELISA, Indirect ELISA, Sample test

Species Specificity:
human

Product Information

83608-6-PBS targets ATM as part of a matched antibody pair.

MP00592-4: 83608-6-PBS capture and 83608-4-PBS detection (validated in Sandwich ELISA)

Unconjugated rabbit recombinant monoclonal antibody in PBS only (BSA and azide free) storage buffer at a concentration of 1 mg/mL, ready for conjugation. Created using Proteintech's proprietary in-house recombinant technology. Recombinant production enables unrivalled batch-to-batch consistency, easy scale-up, and future security of supply.

This conjugation ready format makes antibodies ideal for use in many applications including: ELISAs, multiplex assays requiring matched pairs, mass cytometry, and multiplex imaging applications. Antibody use should be optimized by the end user for each application and assay.

Storage

Storage:
Store at -80°C.

Storage Buffer:
PBS Only

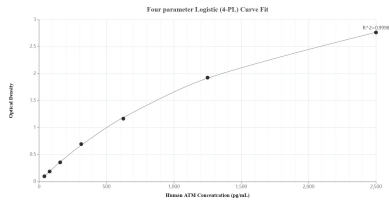
For technical support and original validation data for this product please contact:

T: 1 (888) 4PTGLAB (1-888-478-4522) (toll free
in USA), or 1(312) 455-8498 (outside USA)

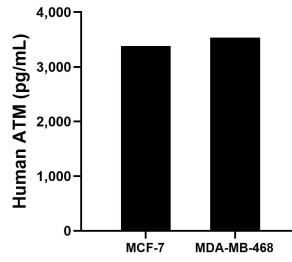
E: proteintech@ptglab.com
W: ptglab.com

This product is exclusively available under Proteintech Group brand and is not available to purchase from any other manufacturer.

Selected Validation Data



Sandwich ELISA standard curve of MP00592-4, Human ATM Recombinant Matched Antibody Pair - PBS only. 83608-6-PBS was coated to a plate as the capture antibody and incubated with serial dilutions of standard Ag25920. 83608-4-PBS was HRP conjugated as the detection antibody. Range: 39.1-2500 pg/mL



The mean ATM concentration was determined to be 3,383.80 pg/mL in MCF-7 cell extract based on a 1.20 mg/mL extract load and 3,536.69 pg/mL in MDA-MB-468 cell extract based on a 3.20 mg/mL extract load.