

For Research Use Only

# ATM Recombinant antibody, PBS Only (Detector)

Catalog Number: 83608-4-PBS



## Basic Information

<b>Catalog Number:</b> 83608-4-PBS	<b>GenBank Accession Number:</b> BC137169	<b>Purification Method:</b> Protein A purification
<b>Size:</b> 100ug, Concentration: 1 mg/ml by Nanodrop;	<b>GeneID (NCBI):</b> 472	<b>CloneNo.:</b> 240560H8
<b>Source:</b> Rabbit	<b>UNIPROT ID:</b> Q13315	
<b>Isotype:</b> IgG	<b>Full Name:</b> ataxia telangiectasia mutated	
<b>Immunogen Catalog Number:</b> AG25920		

## Applications

**Tested Applications:**  
IF/ICC, FC (Intra), Cytometric bead array, Sandwich ELISA, Indirect ELISA, Sample test

**Species Specificity:**  
human

## Product Information

83608-4-PBS targets ATM as part of a matched antibody pair:

MP00592-1: 83608-1-PBS capture and 83608-4-PBS detection (validated in Cytometric bead array)

MP00592-3: 83608-2-PBS capture and 83608-4-PBS detection (validated in Cytometric bead array)

MP00592-4: 83608-6-PBS capture and 83608-4-PBS detection (validated in Sandwich ELISA)

Unconjugated rabbit recombinant monoclonal antibody in PBS only (BSA and azide free) storage buffer at a concentration of 1 mg/mL, ready for conjugation. Created using Proteintech's proprietary in-house recombinant technology. Recombinant production enables unrivalled batch-to-batch consistency, easy scale-up, and future security of supply.

This conjugation ready format makes antibodies ideal for use in many applications including: ELISAs, multiplex assays requiring matched pairs, mass cytometry, and multiplex imaging applications. Antibody use should be optimized by the end user for each application and assay.

## Storage

**Storage:**  
Store at -80°C.  
**Storage Buffer:**  
PBS Only

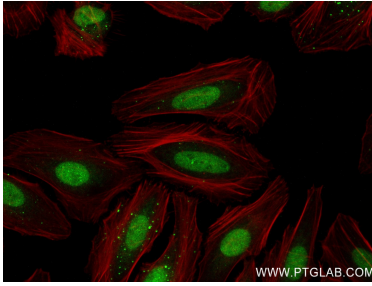
For technical support and original validation data for this product please contact:

T: 1 (888) 4PTGLAB (1-888-478-4522) (toll free in USA), or 1(312) 455-8498 (outside USA)

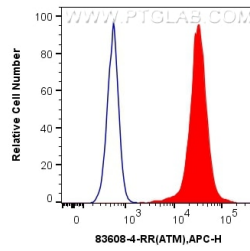
E: [proteintech@ptglab.com](mailto:proteintech@ptglab.com)  
W: [ptglab.com](http://ptglab.com)

**This product is exclusively available under Proteintech Group brand and is not available to purchase from any other manufacturer.**

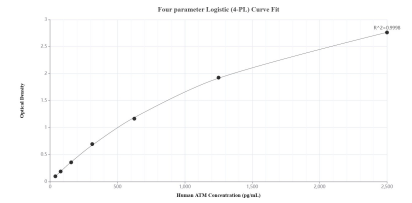
## Selected Validation Data



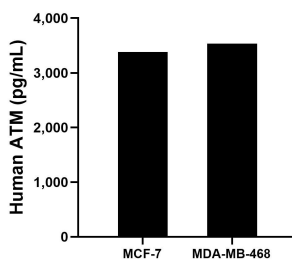
Immunofluorescent analysis of (4% PFA) fixed HeLa cells using ATM antibody (83608-4-RR, Clone: 240560H8) at dilution of 1:600 and CoraLite®488-Conjugated AffiniPure Goat Anti-Rabbit IgG(H+L) (SA00013-2), CL594-Phalloidin (red). This data was developed using the same antibody clone with 83608-4-PBS in a different storage buffer formulation.



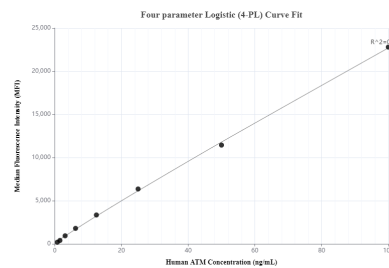
$1 \times 10^6$  HeLa cells were intracellularly stained with 0.25 ug ATM Recombinant Antibody (83608-4-RR, Clone:240560H8) and APC-Conjugated AffiniPure Goat Anti-Rabbit IgG(H+L)(red), or 0.25 ug Isotype Control (blue). Cells were fixed and permeabilized with Transcription Factor Staining Buffer Kit (PF00011). This data was developed using the same antibody clone with 83608-4-PBS in a different storage buffer formulation.



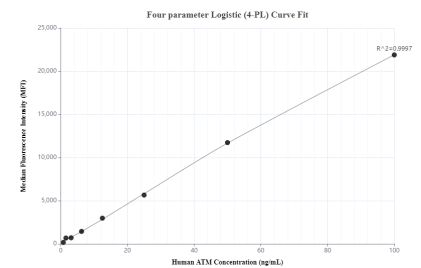
Sandwich ELISA standard curve of MP00592-4, Human ATM Recombinant Matched Antibody Pair - PBS only. 83608-6-PBS was coated to a plate as the capture antibody and incubated with serial dilutions of standard Ag25920. 83608-4-PBS was HRP conjugated as the detection antibody. Range: 39.1-2500 pg/mL



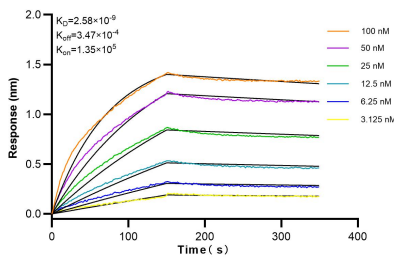
The mean ATM concentration was determined to be 3,383.80 pg/mL in MCF-7 cell extract based on a 1.20 mg/mL extract load and 3,536.69 pg/mL in MDA-MB-468 cell extract based on a 3.20 mg/mL extract load.



Cytometric bead array standard curve of MP00592-1, ATM Recombinant Matched Antibody Pair, PBS Only. Capture antibody: 83608-1-PBS. Detection antibody: 83608-4-PBS. Standard: Ag25920. Range: 0.781-100 ng/mL



Cytometric bead array standard curve of MP00592-3, ATM Recombinant Matched Antibody Pair, PBS Only. Capture antibody: 83608-2-PBS. Detection antibody: 83608-4-PBS. Standard: Ag25920. Range: 0.781-100 ng/mL



Biolayer interferometry (BLI) kinetic assays of 83608-4-RR against Human ATM were performed. The affinity constant is 2.58 nM.