

For Research Use Only

Cryptochrome 1 Recombinant antibody, PBS Only (Capture/Detector)

Catalog Number: 83602-3-PBS



Basic Information

Catalog Number: 83602-3-PBS	GenBank Accession Number: BC030519	Purification Method: Protein A purification
Size: 100ug, Concentration: 1 mg/ml by Nanodrop;	GeneID (NCBI): 1407	CloneNo.: 240520B4
Source: Rabbit	UNIPROT ID: Q16526	
Isotype: IgG	Full Name: cryptochrome 1 (photolyase-like)	
Immunogen Catalog Number: AG4270	Calculated MW: 586 aa, 66 kDa	

Applications

Tested Applications:
Cytometric bead array, Sandwich ELISA, Indirect ELISA, Sample test

Species Specificity:
human

Product Information

83602-3-PBS targets Cryptochrome 1 as part of a matched antibody pair:

MP00603-1: 83602-2-PBS capture and 83602-3-PBS detection (validated in Cytometric bead array)

MP00603-2: 83602-4-PBS capture and 83602-3-PBS detection (validated in Cytometric bead array)

MP00603-3: 83602-3-PBS capture and 83602-1-PBS detection (validated in Cytometric bead array, Sandwich ELISA)

Unconjugated rabbit recombinant monoclonal antibody in PBS only (BSA and azide free) storage buffer at a concentration of 1 mg/mL, ready for conjugation. Created using Proteintech's proprietary in-house recombinant technology. Recombinant production enables unrivalled batch-to-batch consistency, easy scale-up, and future security of supply.

This conjugation ready format makes antibodies ideal for use in many applications including: ELISAs, multiplex assays requiring matched pairs, mass cytometry, and multiplex imaging applications. Antibody use should be optimized by the end user for each application and assay.

Storage

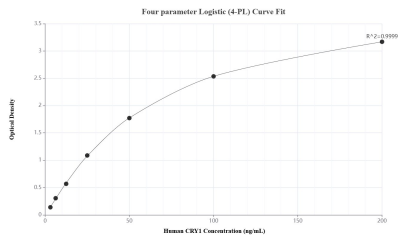
Storage:
Store at -80°C.

Storage Buffer:
PBS Only

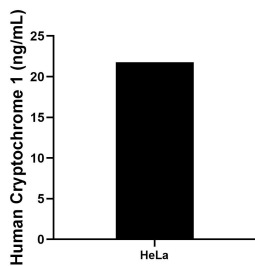
For technical support and original validation data for this product please contact:
T: 1 (888) 4PTGLAB (1-888-478-4522) (toll free in USA), or 1(312) 455-8498 (outside USA)
E: proteintech@ptglab.com
W: ptglab.com

This product is exclusively available under Proteintech Group brand and is not available to purchase from any other manufacturer.

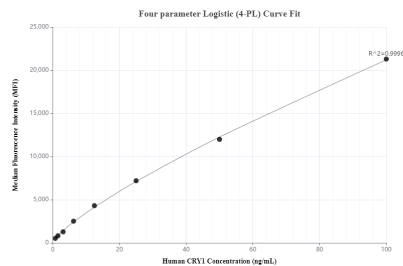
Selected Validation Data



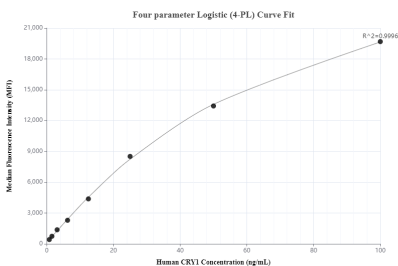
Sandwich ELISA standard curve of MP00603-3, Human Cryptochrome 1 Recombinant Matched Antibody Pair - PBS only. 83602-3-PBS was coated to a plate as the capture antibody and incubated with serial dilutions of standard Ag4270. 83602-1-PBS was HRP conjugated as the detection antibody. Range: 3.13-200 ng/mL



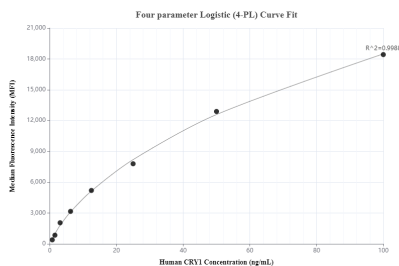
The mean Cryptochrome 1 concentration was determined to be 21.76 ng/mL in HeLa cell extract based on a 1.20 mg/mL extract load.



Cytometric bead array standard curve of MP00603-1, CRY1 Recombinant Matched Antibody Pair, PBS Only. Capture antibody: 83602-2-PBS. Detection antibody: 83602-3-PBS. Standard: Ag4270. Range: 0.781-100 ng/mL



Cytometric bead array standard curve of MP00603-2, CRY1 Recombinant Matched Antibody Pair, PBS Only. Capture antibody: 83602-4-PBS. Detection antibody: 83602-3-PBS. Standard: Ag4270. Range: 0.781-100 ng/mL



Cytometric bead array standard curve of MP00603-3, CRY1 Recombinant Matched Antibody Pair, PBS Only. Capture antibody: 83602-3-PBS. Detection antibody: 83602-1-PBS. Standard: Ag4270. Range: 0.781-100 ng/mL