

For Research Use Only

PD-L1/CD274 Recombinant antibody, PBS Only (Capture/Detector)

Catalog Number: 83600-6-PBS



Basic Information

Catalog Number: 83600-6-PBS	GenBank Accession Number: BC074984	Purification Method: Protein A purification
Size: 100ug, Concentration: 1 mg/ml by Nanodrop;	GeneID (NCBI): 29126	CloneNo.: 240721D2
Source: Rabbit	UNIPROT ID: Q9NZQ7	
Isotype: IgG	Full Name: CD274 molecule	
	Calculated MW: 290 aa, 33 kDa	

Applications

Tested Applications:
Cytometric bead array, Sandwich ELISA, Indirect ELISA,
Sample test

Species Specificity:
human

Product Information

83600-6-PBS targets PD-L1/CD274 as part of a matched antibody pair:

MP00601-3: 83600-6-PBS capture and 83600-4-PBS detection (validated in Cytometric bead array)

MP00601-4: 83600-7-PBS capture and 83600-6-PBS detection (validated in Sandwich ELISA)

Unconjugated rabbit recombinant monoclonal antibody in PBS only (BSA and azide free) storage buffer at a concentration of 1 mg/mL, ready for conjugation. Created using Proteintech's proprietary in-house recombinant technology. Recombinant production enables unrivalled batch-to-batch consistency, easy scale-up, and future security of supply.

This conjugation ready format makes antibodies ideal for use in many applications including: ELISAs, multiplex assays requiring matched pairs, mass cytometry, and multiplex imaging applications. Antibody use should be optimized by the end user for each application and assay.

Storage

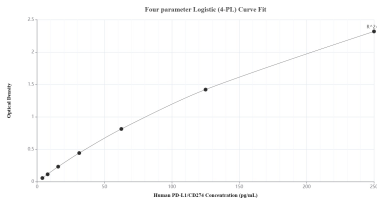
Storage:
Store at -80°C.

Storage Buffer:
PBS Only

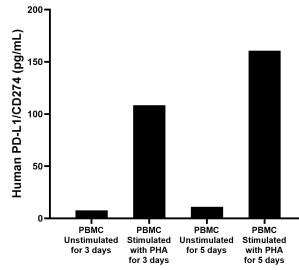
For technical support and original validation data for this product please contact:
T: 1 (888) 4PTGLAB (1-888-478-4522) (toll free in USA), or 1(312) 455-8498 (outside USA) E: proteintech@ptglab.com
W: ptglab.com

This product is exclusively available under Proteintech Group brand and is not available to purchase from any other manufacturer.

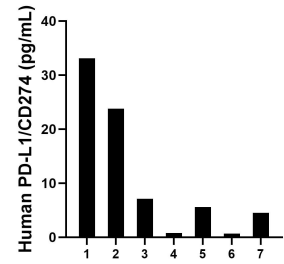
Selected Validation Data



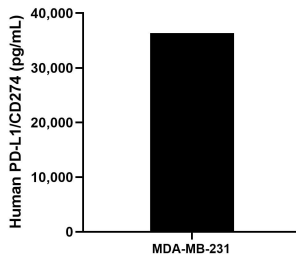
Sandwich ELISA standard curve of MP00601-4, Human PD-L1/CD274 Recombinant Matched Antibody Pair - PBS only. 83600-7-PBS was coated to a plate as the capture antibody and incubated with serial dilutions of standard Eg1114. 83600-6-PBS was HRP conjugated as the detection antibody. Range: 3.9-250 pg/mL



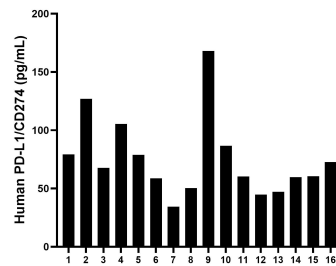
Human peripheral blood mononuclear cells (PBMC) were cultured unstimulated or stimulated with 10 µg/mL PHA for 3 days or 5 days. For the PBMC supernatant cultured for 3 days, the mean PD-L1/CD274 concentration was determined to be 7.7 pg/mL in unstimulated PBMC supernatant, 108.4 pg/mL in PHA stimulated PBMC supernatant. For the PBMC supernatant cultured for 5 days, the mean PD-L1/CD274 concentration was determined to be 11.0 pg/mL in



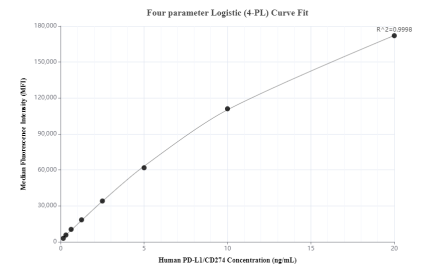
Urine of seven individual healthy human donors was measured. The PD-L1/CD274 concentration of detected samples was determined to be 10.8 pg/mL with a range of 0.7 - 33.1 pg/mL



The mean PD-L1/CD274 concentration was determined to be 36,368.3 pg/mL in MDA-MB-231 cell extract based on a 2.3 mg/mL extract load.



Serum of sixteen individual healthy human donors was measured. The PD-L1/CD274 concentration of detected samples was determined to be 75.1 pg/mL with a range of 34.4-168.1 pg/mL



Cytometric bead array standard curve of MP00601-3, PD-L1/CD274 Recombinant Matched Antibody Pair, PBS Only. Capture antibody: 83600-6-PBS. Detection antibody: 83600-4-PBS. Standard: Eg1114. Range: 0.156-20 ng/mL