

For Research Use Only

PD-L1/CD274 Recombinant antibody

Catalog Number:83600-2-RR



Basic Information

Catalog Number: 83600-2-RR	GenBank Accession Number: BC074984	Purification Method: Protein A purification
Size: 100ul , Concentration: 1000 ug/ml by Nanodrop;	GeneID (NCBI): 29126	CloneNo.: 240721E12
Source: Rabbit	UNIPROT ID: Q9NZQ7	Recommended Dilutions: WB 1:500-1:2000 IF/ICC 1:125-1:500
Isotype: IgG	Full Name: CD274 molecule	
	Calculated MW: 290 aa, 33 kDa	
	Observed MW: 45-50 kDa	

Applications

Tested Applications: WB, IF/ICC, ELISA	Positive Controls: WB : MDA-MB-231 cells, IFN gamma treated A549 cells, human placenta tissue
Species Specificity: human	IF/ICC : MDA-MB-231 cells,

Background Information

Programmed cell death ligand 1 (PD-L1, CD274, or B7-H1), is the first member of B7 family to be discovered. B7 family molecules are type I transmembrane proteins belonging to the immunoglobulin superfamily. In concert with their CD28 family receptors, the B7s are key regulators of the adaptive immune response. PD-L1 is suggested as a negative regulator of T and B cell, and plays important role in mediating tolerance of lymphocytes to self-antigens. It is also involved in the costimulatory signal, essential for T-cell proliferation and production of IL10 and IFNG, in an IL2-dependent and a PD-1-independent manner. PD-L1 is a 290 aa transmembrane protein with a calculated molecular weight of 33 kDa, it is predicted to be 27-30 kDa after signal peptide cleavage (PMID: 25609200; 17076679). The apparent molecular weight has also been reported as 45-70 kDa, major glycosylated form of 45-50 kDa and multiple post-translational modifications form of 65-70 kDa (PMID: 18760278; 16493058).

Storage

Storage:
Store at -20°C. Stable for one year after shipment.
Storage Buffer:
PBS with 0.02% sodium azide and 50% glycerol pH 7.3.
Aliquoting is unnecessary for -20°C storage

*** 20ul sizes contain 0.1% BSA

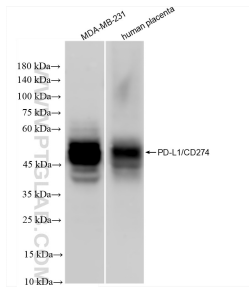
For technical support and original validation data for this product please contact:

T: 1 (888) 4PTGLAB (1-888-478-4522) (toll free in USA), or 1(312) 455-8498 (outside USA)

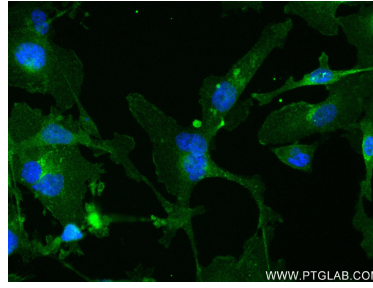
E: proteintech@ptglab.com
W: ptglab.com

This product is exclusively available under Proteintech Group brand and is not available to purchase from any other manufacturer.

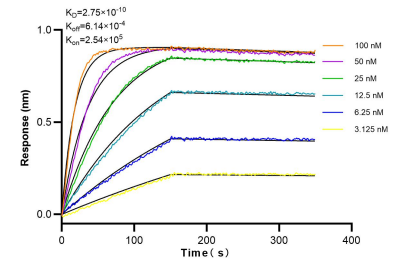
Selected Validation Data



Various lysates were subjected to SDS PAGE followed by western blot with 83600-2-RR (PD-L1/CD274 antibody) at dilution of 1:1000 incubated at room temperature for 1.5 hours.



Immunofluorescent analysis of (4% PFA) fixed MDA-MB-231 cells using PD-L1/CD274 antibody (83600-2-RR, Clone: 240721E12) at dilution of 1:250 and CoraLite®488-Conjugated AffiniPure Goat Anti-Rabbit IgG(H+L) (SA00013-2).



Biacore BLI kinetic assays of 83600-2-RR against Human PD-L1/CD274 were performed. The affinity constant is 0.275 nM.