

For Research Use Only

PD-L1/CD274 Recombinant antibody, PBS Only (Capture)

Catalog Number: 83600-2-PBS



Basic Information

Catalog Number: 83600-2-PBS	GenBank Accession Number: BC074984	Purification Method: Protein A purification
Size: 100ug, Concentration: 1 mg/ml by Nanodrop;	GeneID (NCBI): 29126	CloneNo.: 240721E12
Source: Rabbit	UNIPROT ID: Q9NZQ7	
Isotype: IgG	Full Name: CD274 molecule	
	Calculated MW: 290 aa, 33 kDa	

Applications

Tested Applications:
WB, IF/ICC, Cytometric bead array, Indirect ELISA

Species Specificity:
human

Product Information

83600-2-PBS targets PD-L1/CD274 as part of a matched antibody pair:

MP00601-1: 83600-2-PBS capture and 83600-5-PBS detection (validated in Cytometric bead array)

Unconjugated rabbit recombinant monoclonal antibody in PBS only (BSA and azide free) storage buffer at a concentration of 1 mg/mL, ready for conjugation. Created using Proteintech's proprietary in-house recombinant technology. Recombinant production enables unrivalled batch-to-batch consistency, easy scale-up, and future security of supply.

This conjugation ready format makes antibodies ideal for use in many applications including: ELISAs, multiplex assays requiring matched pairs, mass cytometry, and multiplex imaging applications. Antibody use should be optimized by the end user for each application and assay.

Storage

Storage:
Store at -80°C.
Storage Buffer:
PBS Only

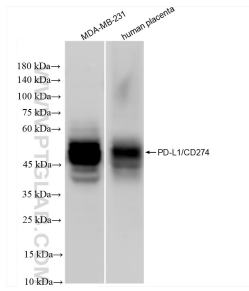
For technical support and original validation data for this product please contact:

T: 1 (888) 4PTGLAB (1-888-478-4522) (toll free
in USA), or 1(312) 455-8498 (outside USA)

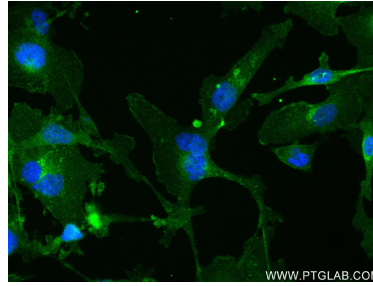
E: proteintech@ptglab.com
W: ptglab.com

This product is exclusively available under Proteintech Group brand and is not available to purchase from any other manufacturer.

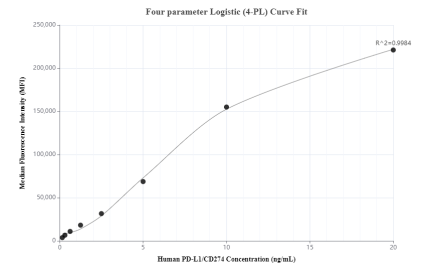
Selected Validation Data



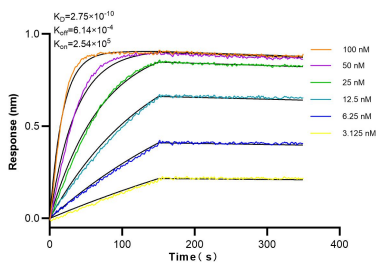
Various lysates were subjected to SDS PAGE followed by western blot with 83600-2-RR (PD-L1/CD274 antibody) at dilution of 1:1000 incubated at room temperature for 1.5 hours. This data was developed using the same antibody clone with 83600-2-PBS in a different storage buffer formulation.



Immunofluorescent analysis of (4% PFA) fixed MDA-MB-231 cells using PD-L1/CD274 antibody (83600-2-RR, Clone: 240721E12) at dilution of 1:250 and CoraLite®488-Conjugated AffiniPure Goat Anti-Rabbit IgG(H+L) (SA00013-2). This data was developed using the same antibody clone with 83600-2-PBS in a different storage buffer formulation.



Cytometric bead array standard curve of MP00601-1, PD-L1/CD274 Recombinant Matched Antibody Pair, PBS Only. Capture antibody: 83600-2-PBS. Detection antibody: 83600-5-PBS. Standard: Eg1114. Range: 0.156-20 ng/mL



Bi-layer interferometry (BLI) kinetic assays of 83600-2-RR against Human PD-L1/CD274 were performed. The affinity constant is 0.275 nM.