

For Research Use Only

# SLC39A14/ZIP-14 Recombinant antibody, PBS Only (Capture/Detector)

Catalog Number: 83597-2-PBS



## Basic Information

|  |   |   |
|--|---|---|
| <b>Catalog Number:</b><br>83597-2-PBS                      | <b>GenBank Accession Number:</b><br>BC015770                                | <b>Purification Method:</b><br>Protein A purification |
| <b>Size:</b><br>100ug, Concentration: 1 mg/ml by Nanodrop; | <b>GeneID (NCBI):</b><br>23516  | <b>CloneNo.:</b><br>240577G11                         |
| <b>Source:</b><br>Rabbit                                   | <b>UNIPROT ID:</b><br>Q15043  |   |
| <b>Isotype:</b><br>IgG                                     | <b>Full Name:</b><br>solute carrier family 39 (zinc transporter), member 14 |   |
| <b>Immunogen Catalog Number:</b><br>AG24210                | <b>Calculated MW:</b><br>54 kDa   |   |

## Applications

**Tested Applications:**  
Cytometric bead array, Sandwich ELISA, Indirect ELISA, Sample test

**Species Specificity:**  
human

## Product Information

83597-2-PBS targets SLC39A14/ZIP-14 as part of a matched antibody pair:

MP00583-1: 83597-2-PBS capture and 83597-3-PBS detection (validated in Cytometric bead array)

MP00583-2: 83597-1-PBS capture and 83597-2-PBS detection (validated in Cytometric bead array)

MP00583-3: 83597-3-PBS capture and 83597-2-PBS detection (validated in Sandwich ELISA)

Unconjugated rabbit recombinant monoclonal antibody in PBS only (BSA and azide free) storage buffer at a concentration of 1 mg/mL, ready for conjugation. Created using Proteintech's proprietary in-house recombinant technology. Recombinant production enables unrivalled batch-to-batch consistency, easy scale-up, and future security of supply.

This conjugation ready format makes antibodies ideal for use in many applications including: ELISAs, multiplex assays requiring matched pairs, mass cytometry, and multiplex imaging applications. Antibody use should be optimized by the end user for each application and assay.

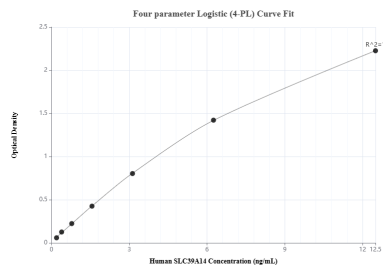
## Storage

**Storage:**  
Store at -80°C.  
**Storage Buffer:**  
PBS Only

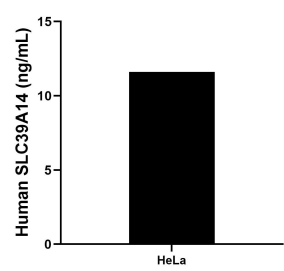
For technical support and original validation data for this product please contact:  
T: 1 (888) 4PTGLAB (1-888-478-4522) (toll free in USA), or 1(312) 455-8498 (outside USA)  
E: [proteintech@ptglab.com](mailto:proteintech@ptglab.com)  
W: [ptglab.com](http://ptglab.com)

This product is exclusively available under Proteintech Group brand and is not available to purchase from any other manufacturer.

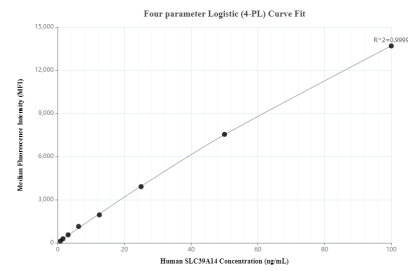
# Selected Validation Data



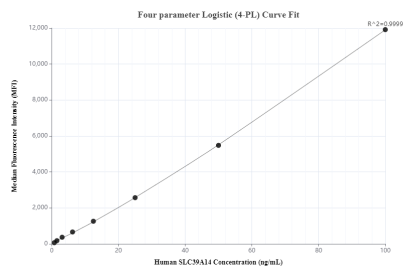
Sandwich ELISA standard curve of MP00583-3, Human SLC39A14/ZIP-14 Recombinant Matched Antibody Pair - PBS only. 83597-3-PBS was coated to a plate as the capture antibody and incubated with serial dilutions of standard Ag24210. 83597-2-PBS was HRP conjugated as the detection antibody. Range:0.195-12.5 ng/mL



The mean SLC39A14/ZIP-14 concentration was determined to be 11.60 ng/mL in HeLa cell extract based on a 1.3 mg/mL extract load.



Cytometric bead array standard curve of MP00583-1, SLC39A14/ZIP-14 Recombinant Matched Antibody Pair, PBS Only. Capture antibody: 83597-2-PBS. Detection antibody: 83597-3-PBS. Standard: Ag24210. Range: 0.78-100 ng/mL



Cytometric bead array standard curve of MP00583-2, SLC39A14/ZIP-14 Recombinant Matched Antibody Pair, PBS Only. Capture antibody: 83597-1-PBS. Detection antibody: 83597-2-PBS. Standard: Ag24210. Range: 0.78-100 ng/mL