

For Research Use Only

# SENP1 Recombinant antibody

Catalog Number:83594-1-RR



## Basic Information

<b>Catalog Number:</b> 83594-1-RR	<b>GenBank Accession Number:</b> BC045639	<b>Purification Method:</b> Protein A purification
<b>Size:</b> 100ul , Concentration: 1000 ug/ml by Nanodrop;	<b>GeneID (NCBI):</b> 29843	<b>CloneNo.:</b> 240478F3
<b>Source:</b> Rabbit	<b>UNIPROT ID:</b> Q9POU3	<b>Recommended Dilutions:</b> IHC 1:50-1:500 IF/ICC 1:125-1:500
<b>Isotype:</b> IgG	<b>Full Name:</b> SUMO1/sentrin specific peptidase 1	
<b>Immunogen Catalog Number:</b> AG18028	<b>Calculated MW:</b> 644 aa, 73 kDa	

## Applications

<b>Tested Applications:</b> IHC, IF/ICC, FC (Intra), ELISA	<b>Positive Controls:</b> IHC : human intrahepatic cholangiocarcinoma tissue, IF/ICC : A431 cells,
<b>Species Specificity:</b> human	
<b>Note-IHC: suggested antigen retrieval with TE buffer pH 9.0; (*) Alternatively, antigen retrieval may be performed with citrate buffer pH 6.0</b>	

## Background Information

SENP1, Sentrin-specific protease 1, is a cysteine protease that specifically targets members of the small ubiquitin-like modifier (SUMO) protein family. SENP1 catalyzes two functions in the SUMO pathway (PMID: 29506078). The first is the hydrolysis of an alpha-linked peptide bond at the C-terminal end of the small ubiquitin-like modifier (SUMO) propeptides. The second is the deconjugation of SUMO 1, SUMO2 and SUMO3 from targeted proteins (PMID: 16253240). SENP1 is located in the nucleus and cytosol.

## Storage

**Storage:**  
Store at -20°C. Stable for one year after shipment.  
**Storage Buffer:**  
PBS with 0.02% sodium azide and 50% glycerol pH 7.3.  
Aliquoting is unnecessary for -20°C storage

\*\*\* 20ul sizes contain 0.1% BSA

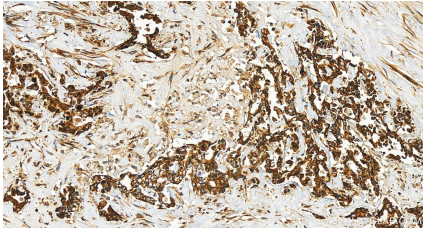
For technical support and original validation data for this product please contact:

T: 1 (888) 4PTGLAB (1-888-478-4522) (toll free in USA), or 1(312) 455-8498 (outside USA)

E: [proteintech@ptglab.com](mailto:proteintech@ptglab.com)  
W: [ptglab.com](http://ptglab.com)

This product is exclusively available under Proteintech Group brand and is not available to purchase from any other manufacturer.

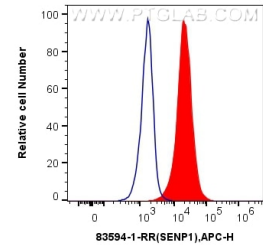
## Selected Validation Data



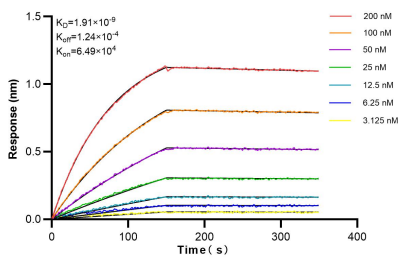
Immunohistochemical analysis of paraffin-embedded human intrahepatic cholangiocarcinoma tissue slide using 83594-1-RR (SEN1 antibody) at dilution of 1:200 (under 20x lens). Heat mediated antigen retrieval with Tris-EDTA buffer (pH 9.0).



Immunofluorescent analysis of (4% PFA) fixed A431 cells using SEN1 antibody (83594-1-RR, Clone: 240478F3) at dilution of 1:250 and CoraLite®488-Conjugated AffiniPure Goat Anti-Rabbit IgG(H+L) (SA00013-2), CL594-Phalloidin (red).



$1 \times 10^6$  HeLa cells were intracellularly stained with 0.25  $\mu$ g SEN1 Recombinant antibody (83594-1-RR, Clone:240478F3) and APC-Conjugated AffiniPure Goat Anti-Rabbit IgG(H+L)(red), or 0.25  $\mu$ g Isotype Control (blue). Cells were fixed and permeabilized with Transcription Factor Staining Buffer Kit (PF00011).



Biolayer interferometry (BLI) kinetic assays of 83594-1-RR against Human SEN1 were performed. The affinity constant is 1.91 nM.