

For Research Use Only

TCF7L1 Recombinant antibody, PBS Only (Capture)

Catalog Number: 83588-3-PBS



Basic Information

Catalog Number: 83588-3-PBS	GenBank Accession Number: BC058894	Purification Method: Protein A purification
Size: 100ug , Concentration: 1 mg/ml by Nanodrop;	GeneID (NCBI): 83439	CloneNo.: 240544F1
Source: Rabbit	UNIPROT ID: Q9HCS4	
Isotype: IgG	Full Name: transcription factor 7-like 1 (T-cell specific, HMG-box)	
Immunogen Catalog Number: AG34253	Calculated MW: 63 kDa	

Applications

Tested Applications:
WB, FC (Intra), Cytometric bead array, Indirect ELISA

Species Specificity:
human, mouse

Product Information

83588-3-PBS targets TCF7L1 as part of a matched antibody pair:

MP00573-1: 83588-3-PBS capture and 83588-2-PBS detection (validated in Cytometric bead array)

Unconjugated rabbit recombinant monoclonal antibody in PBS only (BSA and azide free) storage buffer at a concentration of 1 mg/mL, ready for conjugation. Created using Proteintech's proprietary in-house recombinant technology. Recombinant production enables unrivalled batch-to-batch consistency, easy scale-up, and future security of supply.

This conjugation ready format makes antibodies ideal for use in many applications including: ELISAs, multiplex assays requiring matched pairs, mass cytometry, and multiplex imaging applications. Antibody use should be optimized by the end user for each application and assay.

Storage

Storage:
Store at -80°C.
Storage Buffer:
PBS Only

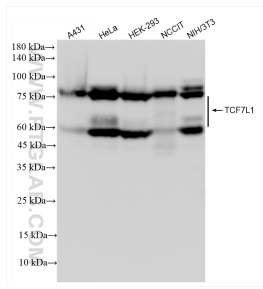
For technical support and original validation data for this product please contact:

T: 1 (888) 4PTGLAB (1-888-478-4522) (toll free in USA), or 1(312) 455-8498 (outside USA)

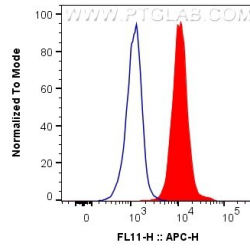
E: proteintech@ptglab.com
W: ptglab.com

This product is exclusively available under Proteintech Group brand and is not available to purchase from any other manufacturer.

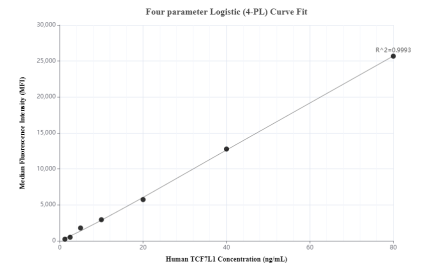
Selected Validation Data



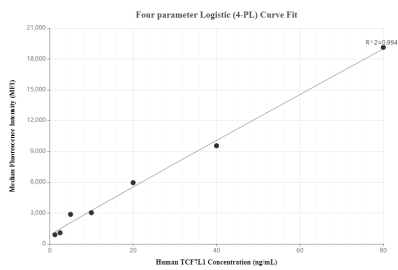
Various lysates were subjected to SDS PAGE followed by western blot with 83588-3-RR (TCF7L1 antibody) at dilution of 1:5000 incubated at room temperature for 1.5 hours. This data was developed using the same antibody clone with 83588-3-PBS in a different storage buffer formulation.



1×10^6 A431 cells were intracellularly stained with 0.25 ug TCF7L1 Recombinant antibody (83588-3-RR, Clone:240544F1) and APC-Conjugated AffiniPure Goat Anti-Rabbit IgG(H+L)(red), or 0.25 ug Isotype Control (blue). Cells were fixed and permeabilized with Transcription Factor Staining Buffer Kit (PF00011). This data was developed using the same antibody clone with 83588-3-PBS in a different storage buffer formulation.



Cytometric bead array standard curve of MP00573-1, TCF7L1 Recombinant Matched Antibody Pair, PBS Only. Capture antibody: 83588-3-PBS. Detection antibody: 83588-2-PBS. Standard: Ag34253. Range: 1.25-80 ng/mL.



Cytometric bead array standard curve of MP00573-2, TCF7L1 Recombinant Matched Antibody Pair, PBS Only. Capture antibody: 83588-3-PBS. Detection antibody: 83588-1-PBS. Standard: Ag34253. Range: 1.25-80 ng/mL.