

For Research Use Only

S100A9 Recombinant antibody, PBS Only (Detector)

Catalog Number: 83578-6-PBS



Basic Information

Catalog Number: 83578-6-PBS	GenBank Accession Number: BC047681	Purification Method: Protein A purification
Size: 100ug, Concentration: 1 mg/ml by Nanodrop;	GeneID (NCBI): 6280	CloneNo.: 240539F4
Source: Rabbit	UNIPROT ID: P06702	
Isotype: IgG	Full Name: S100 calcium binding protein A9	
Immunogen Catalog Number: AG25764	Calculated MW: 13 kDa	

Applications

Tested Applications:
IF/ICC, FC (Intra), Cytometric bead array, Sandwich ELISA, Indirect ELISA, Sample test

Species Specificity:
human

Product Information

83578-6-PBS targets S100A9 as part of a matched antibody pair:

MP00569-3: 83578-2-PBS capture and 83578-6-PBS detection (validated in Cytometric bead array)

MP00569-4: 83578-8-PBS capture and 83578-6-PBS detection (validated in Sandwich ELISA)

Unconjugated rabbit recombinant monoclonal antibody in PBS only (BSA and azide free) storage buffer at a concentration of 1 mg/mL, ready for conjugation. Created using Proteintech's proprietary in-house recombinant technology. Recombinant production enables unrivalled batch-to-batch consistency, easy scale-up, and future security of supply.

This conjugation ready format makes antibodies ideal for use in many applications including: ELISAs, multiplex assays requiring matched pairs, mass cytometry, and multiplex imaging applications. Antibody use should be optimized by the end user for each application and assay.

Background Information

S100A9 is a calcium binding protein as a member of the S100 family of proteins. S100 proteins are low molecular weight (9 to 14 kDa) intracellular calcium-binding proteins that control key cellular pathways including regulation of the cytoskeleton, cell migration and adhesion, and host oxidative defense. S100A9 may exist as a homodimer, heterodimer (24 kDa) with an S100A8 partner (S100A8/A9), or as a heterotetramer (28 kDa) with an S100A8 partner (S100A8/A9). S100A8 and S100A9 are found intracellularly in granulocytes, monocytes, and early differentiation stages of macrophages.

Storage

Storage:
Store at -80°C.
Storage Buffer:
PBS Only

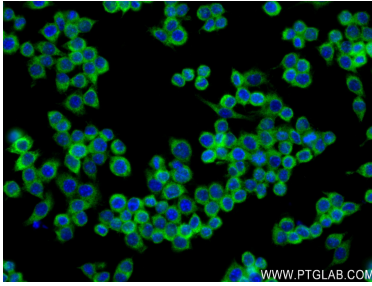
For technical support and original validation data for this product please contact:

T: 1 (888) 4PTGLAB (1-888-478-4522) (toll free in USA), or 1(312) 455-8498 (outside USA)

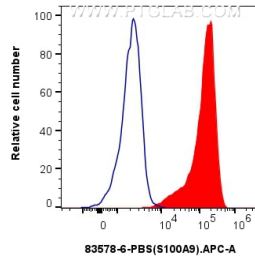
E: proteintech@ptglab.com
W: ptglab.com

This product is exclusively available under Proteintech Group brand and is not available to purchase from any other manufacturer.

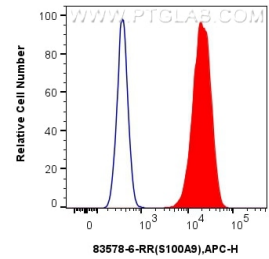
Selected Validation Data



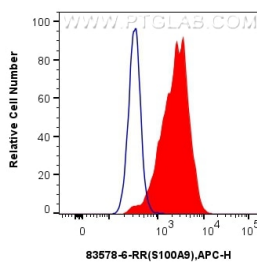
Immunofluorescent analysis of (4% PFA) fixed RAW 264.7 cells using S100A9 antibody (83578-6-RR, Clone: 240539F4) at dilution of 1:250 and CoraLite®488-Conjugated AffiniPure Goat Anti-Rabbit IgG(H+L) (SA00013-2). This data was developed using the same antibody clone with 83578-6-PBS in a different storage buffer formulation.



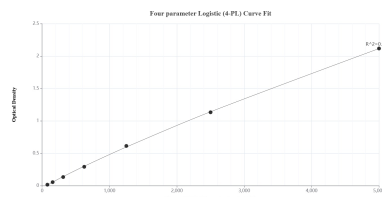
1x10⁶ A431 cells were intracellularly stained with 0.25 ug S100A9 Recombinant antibody, PBS Only (Detector) (83578-6-PBS, Clone:240539F4) and APC-Conjugated Goat Anti-Rabbit IgG(H+L) (red), or 0.25 ug Isotype Control (blue). Cells were fixed and permeabilized with True-Nuclear Transcription Factor Buffer Set.



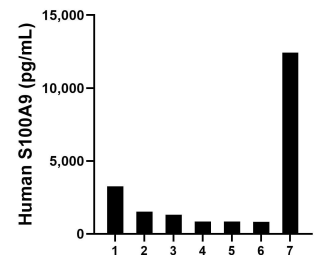
1x10⁶ A431 cells were intracellularly stained with 0.25 ug S100A9 Recombinant antibody (83578-6-RR, Clone:240539F4) and APC-Conjugated AffiniPure Goat Anti-Rabbit IgG(H+L) (red), or 0.25 ug Isotype Control (blue). Cells were fixed and permeabilized with Transcription Factor Staining Buffer Kit (PF00011). This data was developed using the same antibody clone with 83578-6-PBS in a different storage buffer formulation.



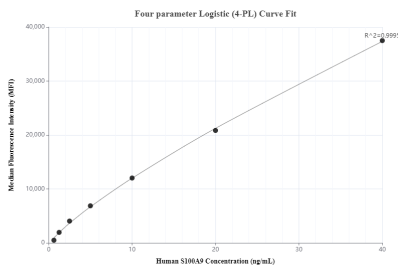
1x10⁶ Jurkat cells were intracellularly stained with 0.25 ug S100A9 Recombinant antibody (83578-6-RR, Clone:240539F4) and APC-Conjugated AffiniPure Goat Anti-Rabbit IgG(H+L) (red), or 0.25 ug Isotype Control (blue). Cells were fixed and permeabilized with Transcription Factor Staining Buffer Kit (PF00011). This data was developed using the same antibody clone with 83578-6-PBS in a different storage buffer formulation.



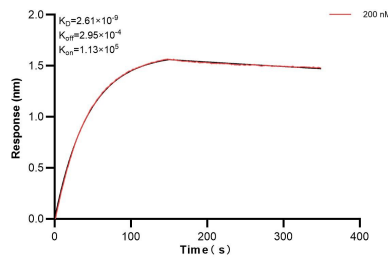
Sandwich ELISA standard curve of MP00569-4, Human S100A9 Recombinant Matched Antibody Pair - PBS only. 83578-8-PBS was coated to a plate as the capture antibody and incubated with serial dilutions of standard Ag25764. 83578-6-PBS was HRP conjugated as the detection antibody. Range: 78.1-5000 pg/mL.



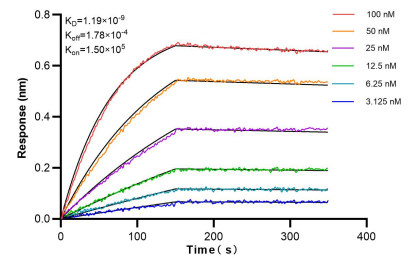
Serum of seven individual healthy human donors was measured. The S100A9 concentration of detected samples was determined to be 3,005.7 pg/mL with a range of 818.9-12,431.7 pg/mL.



Cytometric bead array standard curve of MP00569-3, S100A9 Recombinant Matched Antibody Pair, PBS Only. Capture antibody: 83578-2-PBS. Detection antibody: 83578-6-PBS. Standard: Ag25764. Range: 0.625-40 ng/mL.



Biolayer interferometry (BLI) kinetic assay of 83578-6-PBS against Human S100A9 was performed. The affinity constant is 2.61 nM.



Biolayer interferometry (BLI) kinetic assays of 83578-6-RR against Human S100A9 were performed. The affinity constant is 1.19 nM.