

For Research Use Only

S100A9 Recombinant antibody, PBS Only (Capture)

Catalog Number: 83578-2-PBS



Basic Information

Catalog Number: 83578-2-PBS	GenBank Accession Number: BC047681	Purification Method: Protein A purification
Size: 100ug, Concentration: 1 mg/ml by Nanodrop;	GeneID (NCBI): 6280	CloneNo.: 240539G9
Source: Rabbit	UNIPROT ID: P06702	Recommended Dilutions: WB 1:1000-1:4000
Isotype: IgG	Full Name: S100 calcium binding protein A9	
Immunogen Catalog Number: AG25764	Calculated MW: 13 kDa	
	Observed MW: 14 kDa	

Applications

Tested Applications: WB, IF/ICC, Cytometric bead array, Indirect ELISA	Positive Controls: WB : THP-1 cells, MCF-7 cells, HL-60 cells
Species Specificity: human	

Product Information

83578-2-PBS targets S100A9 as part of a matched antibody pair:

MP00569-3: 83578-2-PBS capture and 83578-6-PBS detection (validated in Cytometric bead array)

Unconjugated rabbit recombinant monoclonal antibody in PBS only (BSA and azide free) storage buffer at a concentration of 1 mg/mL, ready for conjugation. Created using Proteintech's proprietary in-house recombinant technology. Recombinant production enables unrivalled batch-to-batch consistency, easy scale-up, and future security of supply.

This conjugation ready format makes antibodies ideal for use in many applications including: ELISAs, multiplex assays requiring matched pairs, mass cytometry, and multiplex imaging applications. Antibody use should be optimized by the end user for each application and assay.

Background Information

S100A9 is a calcium binding protein as a member of the S100 family of proteins. S100 proteins are low molecular weight (9 to 14 kDa) intracellular calcium-binding proteins that control key cellular pathways including regulation of the cytoskeleton, cell migration and adhesion, and host oxidative defense. S100A9 may exist as a homodimer, heterodimer with an S100A8 partner (S100A8/A9), or as a heterotetramer with an S100A8 partner (S100A8/A9). S100A8 and S100A9 are found intracellularly in granulocytes, monocytes, and early differentiation stages of macrophages.

Storage

Storage:
Store at -80°C.
Storage Buffer:
PBS Only

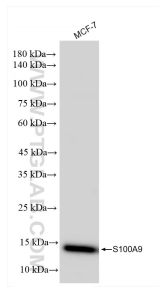
For technical support and original validation data for this product please contact:

T: 1 (888) 4PTGLAB (1-888-478-4522) (toll free in USA), or 1(312) 455-8498 (outside USA)

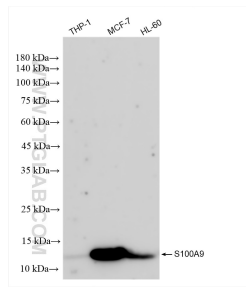
E: proteintech@ptglab.com
W: ptglab.com

This product is exclusively available under Proteintech Group brand and is not available to purchase from any other manufacturer.

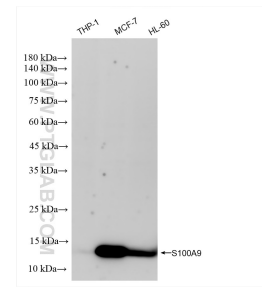
Selected Validation Data



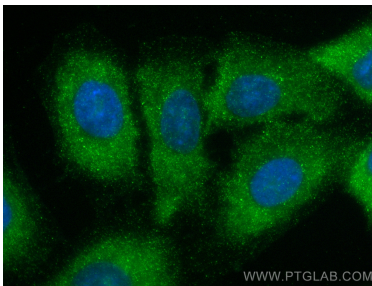
MCF-7 cells were subjected to SDS PAGE followed by western blot with 83578-2-RR (S100A9 antibody) at dilution of 1:5000 incubated at room temperature for 1.5 hours. This data was developed using the same antibody clone with 83578-2-PBS in a different storage buffer formulation.



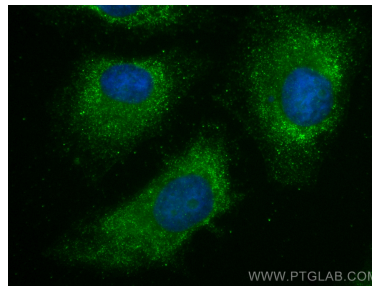
Various lysates were subjected to SDS PAGE followed by western blot with 83578-2-PBS (S100A9 antibody) at dilution of 1:2000 incubated at room temperature for 1.5 hours.



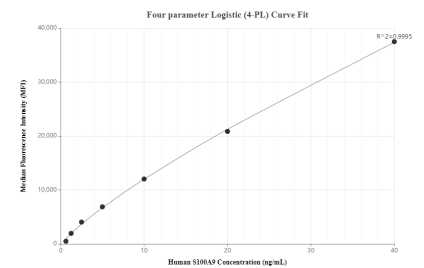
Various lysates were subjected to SDS PAGE followed by western blot with 83578-2-RR (S100A9 antibody) at dilution of 1:2000 incubated at room temperature for 1.5 hours. This data was developed using the same antibody clone with 83578-2-PBS in a different storage buffer formulation.



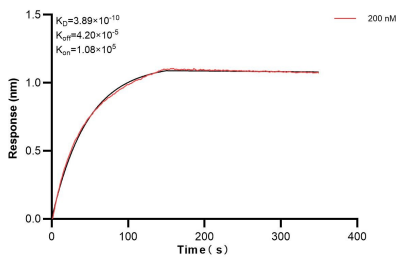
Immunofluorescent analysis of (-20°C Methanol) fixed A549 cells using S100A9 antibody (83578-2-RR, Clone: 240539G9) at dilution of 1:200 and Multi-rAb CoraLite® Plus 488-Goat Anti-Rabbit Recombinant Secondary Antibody (H+L) (RGAR002). This data was developed using the same antibody clone with 83578-2-PBS in a different storage buffer formulation.



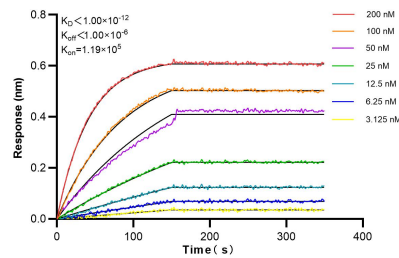
Immunofluorescent analysis of (-20°C Ethanol) fixed HeLa cells using S100A9 antibody (83578-2-RR, Clone: 240539G9) at dilution of 1:200 and Multi-rAb CoraLite® Plus 488-Goat Anti-Rabbit Recombinant Secondary Antibody (H+L) (RGAR002). This data was developed using the same antibody clone with 83578-2-PBS in a different storage buffer formulation.



Cytometric bead array standard curve of MP00569-3, S100A9 Recombinant Matched Antibody Pair, PBS Only. Capture antibody: 83578-2-PBS. Detection antibody: 83578-6-PBS. Standard: Ag25764. Range: 0.625-40 ng/mL.



Biolayer interferometry (BLI) kinetic assay of 83578-2-PBS against Human S100A9 was performed. The affinity constant is 0.389 nM.



Biolayer interferometry (BLI) kinetic assays of 83578-2-RR against Human S100A9 were performed. The affinity constant is below 1 pM.