

For Research Use Only

KDM3A, JMJD1A Recombinant antibody, PBS Only (Detector)

Catalog Number: 83571-3-PBS



Basic Information

Catalog Number: 83571-3-PBS	GenBank Accession Number: BC038297	Purification Method: Protein A purification
Size: 100ug , Concentration: 1 mg/ml by Nanodrop;	GeneID (NCBI): 55818	CloneNo.: 240532D9
Source: Rabbit	UNIPROT ID: Q9Y4C1	
Isotype: IgG	Full Name: lysine (K)-specific demethylase 3A	
Immunogen Catalog Number: AG28687	Calculated MW: 150 kDa	

Applications

Tested Applications:
Cytometric bead array, Sandwich ELISA, Indirect ELISA,
Sample test

Species Specificity:
human

Product Information

83571-3-PBS targets KDM3A, JMJD1A as part of a matched antibody pair:

MP00565-3: 83571-1-PBS capture and 83571-3-PBS detection (validated in Cytometric bead array, Sandwich ELISA)

Unconjugated rabbit recombinant monoclonal antibody in PBS only (BSA and azide free) storage buffer at a concentration of 1 mg/mL, ready for conjugation. Created using Proteintech's proprietary in-house recombinant technology. Recombinant production enables unrivalled batch-to-batch consistency, easy scale-up, and future security of supply.

This conjugation ready format makes antibodies ideal for use in many applications including: ELISAs, multiplex assays requiring matched pairs, mass cytometry, and multiplex imaging applications. Antibody use should be optimized by the end user for each application and assay.

Storage

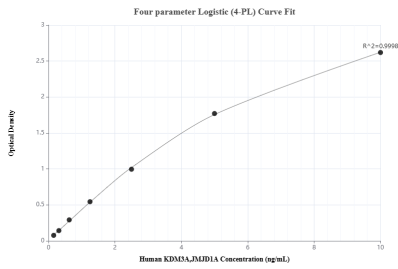
Storage:
Store at -80°C.

Storage Buffer:
PBS Only

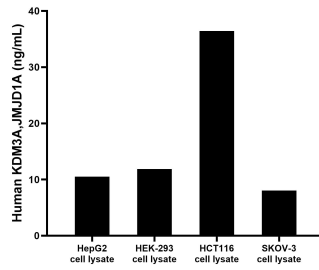
For technical support and original validation data for this product please contact:
T: 1 (888) 4PTGLAB (1-888-478-4522) (toll free in USA), or 1(312) 455-8498 (outside USA) E: proteintech@ptglab.com
W: ptglab.com

This product is exclusively available under Proteintech Group brand and is not available to purchase from any other manufacturer.

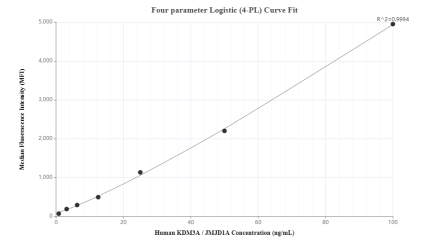
Selected Validation Data



Sandwich ELISA standard curve of MP00565-3, Human KDM3A, JMJD1A Recombinant Matched Antibody Pair - PBS only. 83571-1-PBS was coated to a plate as the capture antibody and incubated with serial dilutions of standard Ag28687. 83571-3-PBS was HRP conjugated as the detection antibody. Range: 0.156-10 ng/mL



HepG2, HEK-293, HCT116 and SKOV-3 cell lysates were measured. The human KDM3A, JMJD1A concentration of detected samples was determined to be 10.52 ng/mL (based on a 1.0 mg/mL extract load) in HepG2 cell lysate, 11.86 ng/mL (based on 1.2 mg/mL extract load) in HEK-293 cell lysate, 36.44 ng/mL (based on a 4.8 mg/mL extract load) in HCT116 cell lysate and 8.02 ng/mL (based on a 1.2 mg/mL extract load) in SKOV-3 cell lysate.



Cytometric bead array standard curve of MP00565-3, KDM3A, JMJD1A Recombinant Matched Antibody Pair, PBS Only. Capture antibody: 83571-1-PBS. Detection antibody: 83571-3-PBS. Standard: Ag28687. Range: 0.781-100 ng/mL