

For Research Use Only

ANAPC10 Recombinant antibody

Catalog Number: 83570-4-RR



Basic Information

Catalog Number: 83570-4-RR	GenBank Accession Number: BC005217	Purification Method: Protein A purification
Size: 100ul , Concentration: 1000 ug/ml by Nanodrop;	GeneID (NCBI): 10393	CloneNo.: 240492E7
Source: Rabbit	UNIPROT ID: Q9UM13	Recommended Dilutions: IF/ICC 1:125-1:500
Isotype: IgG	Full Name: anaphase promoting complex subunit 10	
Immunogen Catalog Number: AG8487	Calculated MW: 185 aa, 21 kDa	

Applications

Tested Applications: IF/ICC, ELISA	Positive Controls: IF/ICC : HeLa cells,
Species Specificity: human	

Background Information

The anaphase promoting complex/cyclosome (APC/C) is a cell cycle-regulated multimeric E3 ubiquitin ligase assembled from 13 individual subunits. The anaphase promoting complex subunit 10 (APC10) is a core subunit of APC/C that is highly conserved in humans. APC10 genetically and physically interacts with a series of subunits of the APC/C and is necessary for the ubiquitination activity of APC/C by enhancing the affinity of the APC/C for its substrate.

Storage

Storage:
Store at -20°C. Stable for one year after shipment.
Storage Buffer:
PBS with 0.02% sodium azide and 50% glycerol pH 7.3.
Aliquoting is unnecessary for -20°C storage

*** 20ul sizes contain 0.1% BSA

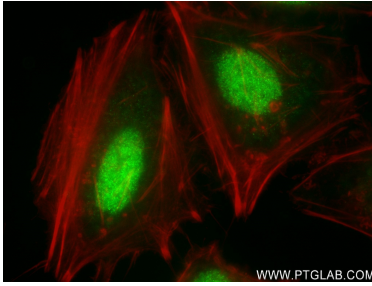
For technical support and original validation data for this product please contact:

T: 1 (888) 4PTGLAB (1-888-478-4522) (toll free
in USA), or 1(312) 455-8498 (outside USA)

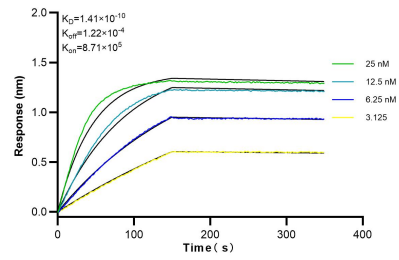
E: proteintech@ptglab.com
W: ptglab.com

This product is exclusively available under Proteintech Group brand and is not available to purchase from any other manufacturer.

Selected Validation Data



Immunofluorescent analysis of (4% PFA) fixed HeLa cells using ANAPC10 antibody (83570-4-RR, Clone: 240492E7) at dilution of 1:250 and CoraLite®488-Conjugated Goat Anti-Rabbit IgG(H+L) (SA00013-2), CL594-Phalloidin (red).



Biolayer interferometry (BLI) kinetic assays of 83570-4-RR against Human ANAPC10 were performed. The affinity constant is 0.141 nM.