

For Research Use Only

ANAPC10 Recombinant antibody, PBS Only



Catalog Number: 83570-4-PBS

Basic Information

Catalog Number: 83570-4-PBS	GenBank Accession Number: BC005217	Purification Method: Protein A purification
Size: 100ug, Concentration: 1 mg/ml by Nanodrop;	GeneID (NCBI): 10393	CloneNo.: 240492E7
Source: Rabbit	UNIPROT ID: Q9UM13	
Isotype: IgG	Full Name: anaphase promoting complex subunit 10	
Immunogen Catalog Number: AG8487	Calculated MW: 185 aa, 21 kDa	

Applications

Tested Applications:
IF/ICC, ELISA

Species Specificity:
human

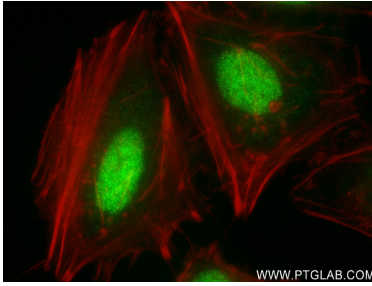
Storage

Storage:
Store at -80°C.
Storage Buffer:
PBS Only

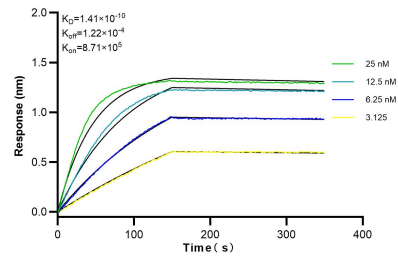
For technical support and original validation data for this product please contact:
T: 1 (888) 4PTGLAB (1-888-478-4522) (toll free in USA), or 1(312) 455-8498 (outside USA) E: proteintech@ptglab.com
W: ptglab.com

This product is exclusively available under Proteintech Group brand and is not available to purchase from any other manufacturer.

Selected Validation Data



Immunofluorescent analysis of (4% PFA) fixed HeLa cells using ANAPC10 antibody (83570-4-RR, Clone: 240492E7) at dilution of 1:250 and CoraLite®488-Conjugated AffiniPure Goat Anti-Rabbit IgG(H+L) (SA00013-2), CL594-Phalloidin (red). This data was developed using the same antibody clone with 83570-4-PBS in a different storage buffer formulation.



Biolayer interferometry (BLI) kinetic assays of 83570-4-RR against Human ANAPC10 were performed. The affinity constant is 0.141 nM.