

For Research Use Only

SYTL4 Recombinant antibody

Catalog Number:83564-5-RR



Basic Information

Catalog Number: 83564-5-RR	GenBank Accession Number: BC014913	Purification Method: Protein A purification
Size: 100ul , Concentration: 300 ug/ml by Nanodrop;	GeneID (NCBI): 94121	CloneNo.: 240556E2
Source: Rabbit	UNIPROT ID: Q96C24	Recommended Dilutions: WB 1:500-1:3000
Isotype: IgG	Full Name: synaptotagmin-like 4	
Immunogen Catalog Number: AG2772	Calculated MW: 671 aa, 76 kDa	
	Observed MW: 74-76 kDa	

Applications

Tested Applications: WB, ELISA	Positive Controls: WB : HeLa cells, HEK-293 cells
Species Specificity: human	

Background Information

SYTL4, also known as SLP4 or granuphilin, is a member of the synaptotagmin-like protein (Slp) family. Members of this family are characterized by presence of an N-terminal Slp homology domain (SHD), which functions as a Rab27-binding domain, and C-terminal tandem C2 domains, putative Ca(2+)-binding motifs. SYTL4 is specifically expressed on dense-core granules in certain neuroendocrine cells and negatively controls dense-core vesicle exocytosis through specific interaction with Rab27A. (PMID: 16481396; 16473610)

Storage

Storage:
Store at -20°C. Stable for one year after shipment.
Storage Buffer:
PBS with 0.02% sodium azide and 50% glycerol pH 7.3.
Aliquoting is unnecessary for -20°C storage

*** 20ul sizes contain 0.1% BSA

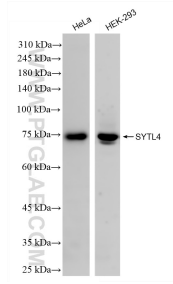
For technical support and original validation data for this product please contact:

T: 1 (888) 4PTGLAB (1-888-478-4522) (toll free in USA), or 1(312) 455-8498 (outside USA)

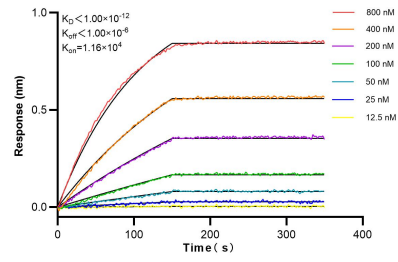
E: proteintech@ptglab.com
W: ptglab.com

This product is exclusively available under Proteintech Group brand and is not available to purchase from any other manufacturer.

Selected Validation Data



Various lysates were subjected to SDS PAGE followed by western blot with 83564-5-RR (SYTL4 antibody) at dilution of 1:1500 incubated at room temperature for 1.5 hours.



Biolayer interferometry (BLI) kinetic assays of 83564-5-RR against Human SYTL4 were performed. The affinity constant is below 1 pM.