

For Research Use Only

RSAD2 Recombinant antibody, PBS Only (Capture)



Catalog Number: 83563-2-PBS

Basic Information

Catalog Number: 83563-2-PBS	GenBank Accession Number: BC017969	Purification Method: Protein A purification
Size: 100ug , Concentration: 1 mg/ml by Nanodrop;	GeneID (NCBI): 91543	CloneNo.: 240562F12
Source: Rabbit	UNIPROT ID: Q8WXG1	
Isotype: IgG	Full Name: radical S-adenosyl methionine domain containing 2	
Immunogen Catalog Number: AG27733	Calculated MW: 361 aa, 42 kDa	

Applications

Tested Applications:
WB, Cytometric bead array, Indirect ELISA

Species Specificity:
human

Product Information

83563-2-PBS targets RSAD2 as part of a matched antibody pair:

MP00546-1: 83563-2-PBS capture and 83563-1-PBS detection (validated in Cytometric bead array)

Unconjugated rabbit recombinant monoclonal antibody in PBS only (BSA and azide free) storage buffer at a concentration of 1 mg/mL, ready for conjugation. Created using Proteintech's proprietary in-house recombinant technology. Recombinant production enables unrivalled batch-to-batch consistency, easy scale-up, and future security of supply.

This conjugation ready format makes antibodies ideal for use in many applications including: ELISAs, multiplex assays requiring matched pairs, mass cytometry, and multiplex imaging applications. Antibody use should be optimized by the end user for each application and assay.

Storage

Storage:
Store at -80°C.

Storage Buffer:
PBS Only

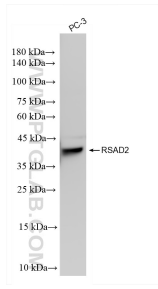
For technical support and original validation data for this product please contact:

T: 1 (888) 4PTGLAB (1-888-478-4522) (toll free in USA), or 1(312) 455-8498 (outside USA)

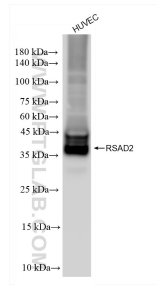
E: proteintech@ptglab.com
W: ptglab.com

This product is exclusively available under Proteintech Group brand and is not available to purchase from any other manufacturer.

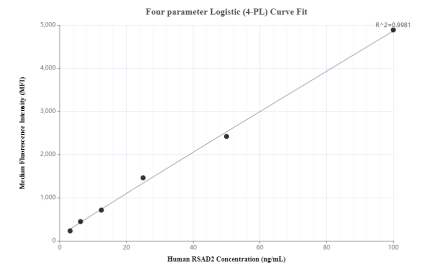
Selected Validation Data



PC-3 cells were subjected to SDS PAGE followed by western blot with 83563-2-RR (RSAD2 antibody) at dilution of 1:3300 incubated at room temperature for 1.5 hours. This data was developed using the same antibody clone with 83563-2-PBS in a different storage buffer formulation.



HUVEC cells were subjected to SDS PAGE followed by western blot with 83563-2-RR (RSAD2 antibody) at dilution of 1:3300 incubated at room temperature for 1.5 hours. This data was developed using the same antibody clone with 83563-2-PBS in a different storage buffer formulation.



Cytometric bead array standard curve of MP00546-1, RSAD2 Recombinant Matched Antibody Pair, PBS Only. Capture antibody: 83563-2-PBS. Detection antibody: 83563-1-PBS. Standard: Ag27733. Range: 3.13-100 ng/mL.