

For Research Use Only

# MAGI2 Recombinant antibody

Catalog Number:83561-6-RR



## Basic Information

<b>Catalog Number:</b> 83561-6-RR	<b>GenBank Accession Number:</b> BC150277	<b>Purification Method:</b> Protein A purification
<b>Size:</b> 100ul , Concentration: 1000 ug/ml by Nanodrop;	<b>GeneID (NCBI):</b> 9863	<b>CloneNo.:</b> 240512C10
<b>Source:</b> Rabbit	<b>UNIPROT ID:</b> Q86UL8	<b>Recommended Dilutions:</b> WB 1:2000-1:10000
<b>Isotype:</b> IgG	<b>Full Name:</b> membrane associated guanylate kinase, WW and PDZ domain containing 2	
<b>Immunogen Catalog Number:</b> AG18279	<b>Calculated MW:</b> 1455 aa, 159 kDa	
	<b>Observed MW:</b> 140-150 kDa	

## Applications

<b>Tested Applications:</b> WB, ELISA	<b>Positive Controls:</b> WB : rat brain tissue,
<b>Species Specificity:</b> human, rat	

## Background Information

MAGI proteins are scaffolding proteins, belonging to the Membrane-Associated Guanylate Kinase Inverted proteins of the MAGUK family. There are three members of the MAGI subfamily, MAGI-1, MAGI-2, and MAGI-3. They are comprised of 6 PDZ domains, 2 WW domains, and 1 GUK domain. They have been proven to mediate the transport and signal transduction of various G protein-coupled receptors (GPCRs) (PMID: 29625175). The antibody is specific to MAGI2.

## Storage

**Storage:**  
Store at -20°C. Stable for one year after shipment.  
**Storage Buffer:**  
PBS with 0.02% sodium azide and 50% glycerol pH 7.3.  
Aliquoting is unnecessary for -20°C storage

\*\*\* 20ul sizes contain 0.1% BSA

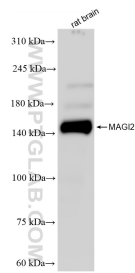
For technical support and original validation data for this product please contact:

T: 1 (888) 4PTGLAB (1-888-478-4522) (toll free in USA), or 1(312) 455-8498 (outside USA)

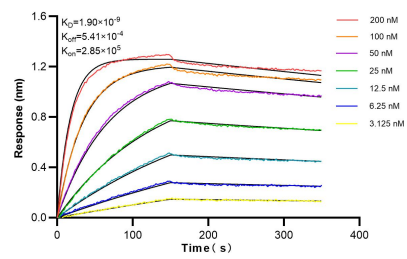
E: [proteintech@ptglab.com](mailto:proteintech@ptglab.com)  
W: [ptglab.com](http://ptglab.com)

This product is exclusively available under Proteintech Group brand and is not available to purchase from any other manufacturer.

## Selected Validation Data



rat brain tissue were subjected to SDS PAGE followed by western blot with 83561-6-RR (MAGI2 antibody) at dilution of 1:5000 incubated at room temperature for 1.5 hours.



Biolayer interferometry (BLI) kinetic assays of 83561-6-RR against Human MAGI2 were performed. The affinity constant is 1.90 nM.