

For Research Use Only

MAGI2 Recombinant antibody, PBS Only



Catalog Number: 83561-6-PBS

Basic Information

Catalog Number:

83561-6-PBS

Size:

100ug, Concentration: 1 mg/ml by Nanodrop;

Source:

Rabbit

Isotype:

IgG

Immunogen Catalog Number:

AG18279

GenBank Accession Number:

BC150277

GeneID (NCBI):

9863

UNIPROT ID:

Q86UL8

Full Name:

membrane associated guanylate kinase, WW and PDZ domain containing 2

Calculated MW:

1455 aa, 159 kDa

Purification Method:

Protein A purification

CloneNo.:

240512C10

Applications

Tested Applications:

ELISA, WB

Species Specificity:

rat, human

Storage

Storage:

Store at -80°C.

Storage Buffer:

PBS Only

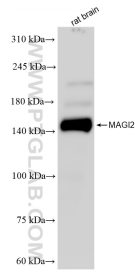
For technical support and original validation data for this product please contact:

T: 1 (888) 4PTGLAB (1-888-478-4522) (toll free in USA), or 1(312) 455-8498 (outside USA)

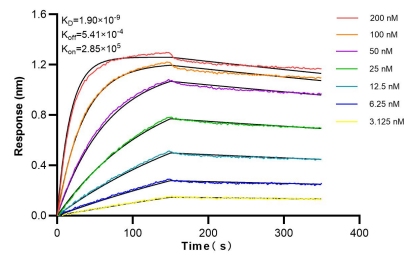
E: proteintech@ptglab.com
W: ptglab.com

This product is exclusively available under Proteintech Group brand and is not available to purchase from any other manufacturer.

Selected Validation Data



rat brain tissue were subjected to SDS PAGE followed by western blot with 83561-6-RR (MAGI2 antibody) at dilution of 1:5000 incubated at room temperature for 1.5 hours. This data was developed using the same antibody clone with 83561-6-PBS in a different storage buffer formulation.



Biolayer interferometry (BLI) kinetic assays of 83561-6-RR against Human MAGI2 were performed. The affinity constant is 1.90 nM.