

For Research Use Only

S100A14 Recombinant antibody, PBS Only

Catalog Number:83559-5-PBS



Basic Information

| | | |
|---|---|---|
| Catalog Number: 83559-5-PBS | GenBank Accession Number: BC005019 | Purification Method: Protein A purification |
| Size: 100ug , Concentration: 1 mg/ml by Nanodrop; | GeneID (NCBI): 57402 | CloneNo.: 240528B6 |
| Source: Rabbit | UNIPROT ID: Q9HCY8 | |
| Isotype: IgG | Full Name: S100 calcium binding protein A14 | |
| Immunogen Catalog Number: AG0757 | Calculated MW: 12 kDa | |
| | Observed MW: 12 kDa | |

Applications

Tested Applications:
WB, IHC, FC (Intra), ELISA

Species Specificity:
human, mouse, rat

Background Information

The S100 family is a multifunctional group of EF-hand type calcium-binding proteins. S100A14 protein (previously known as BCMP84, S100A15) is a recently identified member of the S100 family. It is differentially expressed in a number of different human malignancies like ovary, breast, uterus, kidney, rectum and colon cancers, and esophageal and oral squamous cell carcinomas (OSCCs).⁷

Storage

Storage:
Store at -80°C.

Storage Buffer:
PBS Only

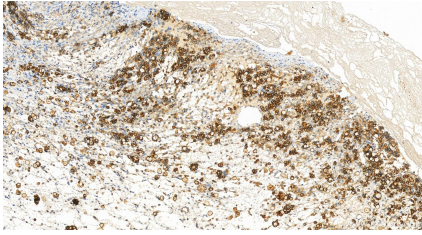
For technical support and original validation data for this product please contact:

T: 1 (888) 4PTGLAB (1-888-478-4522) (toll free in USA), or 1(312) 455-8498 (outside USA)

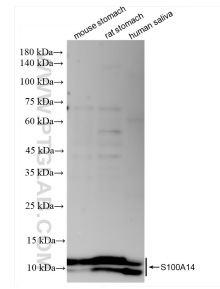
E: proteintech@ptglab.com
W: ptglab.com

This product is exclusively available under Proteintech Group brand and is not available to purchase from any other manufacturer.

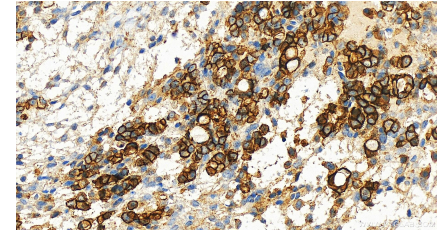
Selected Validation Data



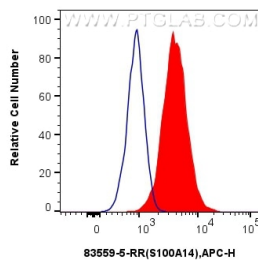
Immunohistochemical analysis of paraffin-embedded human ovary cancer tissue slide using 83559-5-RR (S100A14 antibody) at dilution of 1:200 (under 20x lens). Heat mediated antigen retrieval with Tris-EDTA buffer (pH 9.0). This data was developed using the same antibody clone with 83559-5-PBS in a different storage buffer formulation.



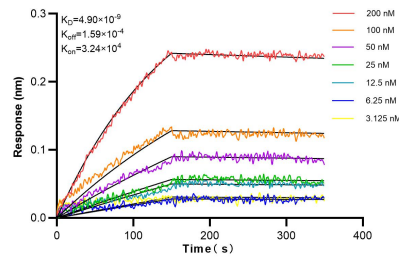
Various lysates were subjected to SDS PAGE followed by western blot with 83559-5-RR (S100A14 antibody) at dilution of 1:5000 incubated at room temperature for 1.5 hours. This data was developed using the same antibody clone with 83559-5-PBS in a different storage buffer formulation.



Immunohistochemical analysis of paraffin-embedded human ovary cancer tissue slide using 83559-5-RR (S100A14 antibody) at dilution of 1:200 (under 20x lens). Heat mediated antigen retrieval with Tris-EDTA buffer (pH 9.0). This data was developed using the same antibody clone with 83559-5-PBS in a different storage buffer formulation.



1×10^6 HeLa cells were intracellularly stained with 0.25 ug S100A14 Recombinant antibody (83559-5-RR, Clone:240528B6) and APC-Conjugated AffiniPure Goat Anti-Rabbit IgG(H+L)(red), or 0.25 ug Isotype Control (blue). Cells were fixed with 4% PFA and permeabilized with Flow Cytometry Perm Buffer (PF00011-C). This data was developed using the same antibody clone with 83559-5-PBS in a different storage buffer formulation.



Biolayer interferometry (BLI) kinetic assays of 83559-5-RR against Human S100A14 were performed. The affinity constant is 4.90 nM.