

For Research Use Only

LONP1 Recombinant antibody, PBS Only (Capture)



Catalog Number: 83552-3-PBS

Basic Information

Catalog Number: 83552-3-PBS	GenBank Accession Number: BC000235	Purification Method: Protein A purification
Size: 100ug , Concentration: 1 mg/ml by Nanodrop;	GeneID (NCBI): 9361	CloneNo.: 240460E5
Source: Rabbit	UNIPROT ID: P36776	
Isotype: IgG	Full Name: lon peptidase 1, mitochondrial	
Immunogen Catalog Number: AG7196	Calculated MW: 106 kDa	

Applications

Tested Applications:
Cytometric bead array, Indirect ELISA, IF/ICC

Species Specificity:
human

Product Information

83552-3-PBS targets LONP1 as part of a matched antibody pair:

MP00531-3: 83552-3-PBS capture and 83552-1-PBS detection (validated in Cytometric bead array)

Unconjugated rabbit recombinant monoclonal antibody in PBS only (BSA and azide free) storage buffer at a concentration of 1 mg/mL, ready for conjugation. Created using Proteintech's proprietary in-house recombinant technology. Recombinant production enables unrivalled batch-to-batch consistency, easy scale-up, and future security of supply.

This conjugation ready format makes antibodies ideal for use in many applications including: ELISAs, multiplex assays requiring matched pairs, mass cytometry, and multiplex imaging applications. Antibody use should be optimized by the end user for each application and assay.

Storage

Storage:
Store at -80°C.

Storage Buffer:
PBS Only

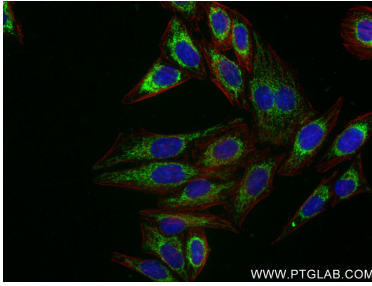
For technical support and original validation data for this product please contact:

T: 1 (888) 4PTGLAB (1-888-478-4522) (toll free in USA), or 1(312) 455-8498 (outside USA)

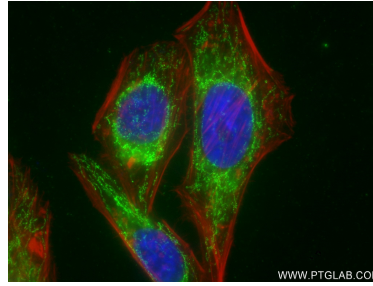
E: proteintech@ptglab.com
W: ptglab.com

This product is exclusively available under Proteintech Group brand and is not available to purchase from any other manufacturer.

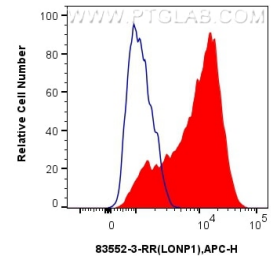
Selected Validation Data



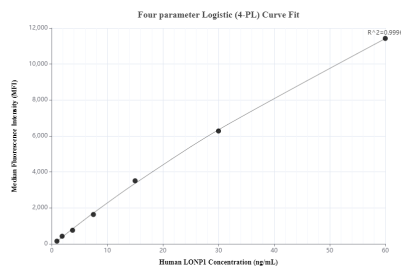
Immunofluorescent analysis of (4% PFA) fixed HepG2 cells using LONP1 antibody (83552-3-RR, Clone: 240460E5) at dilution of 1:400 and CoraLite@488-Conjugated AffiniPure Goat Anti-Rabbit IgG(H+L) (SA00013-2), CL594-Phalloidin (red). This data was developed using the same antibody clone with 83552-3-PBS in a different storage buffer formulation.



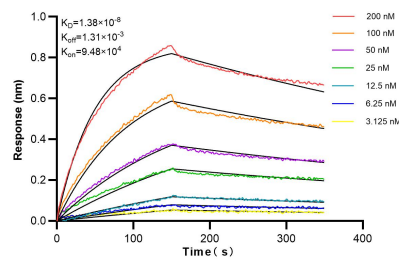
Immunofluorescent analysis of (4% PFA) fixed HepG2 cells using LONP1 antibody (83552-3-RR, Clone: 240460E5) at dilution of 1:400 and CoraLite@488-Conjugated AffiniPure Goat Anti-Rabbit IgG(H+L) (SA00013-2), CL594-Phalloidin (red). This data was developed using the same antibody clone with 83552-3-PBS in a different storage buffer formulation.



1×10^6 HeLa cells were intracellularly stained with 0.25 ug LONP1 Recombinant antibody (83552-3-RR, Clone:240460E5) and APC-Conjugated AffiniPure Goat Anti-Rabbit IgG(H+L)(red), or 0.25 ug Isotype Control (blue). Cells were fixed with 4% PFA and permeabilized with Flow Cytometry Perm Buffer (PF00011-C). This data was developed using the same antibody clone with 83552-3-PBS in a different storage buffer formulation.



Cytometric bead array standard curve of MP00531-3, LONP1 Recombinant Matched Antibody Pair, PBS Only. Capture antibody: 83552-3-PBS. Detection antibody: 83552-1-PBS. Standard: Ag7196. Range: 0.938-60 ng/mL



Biolayer interferometry (BLI) kinetic assays of 83552-3-RR against Human LONP1 were performed. The affinity constant is 1.38 nM.