

For Research Use Only

# Mouse IL-2 Recombinant antibody, PBS Only (Capture/Detector)



Catalog Number: 83547-1-PBS

## Basic Information

<b>Catalog Number:</b> 83547-1-PBS	<b>GenBank Accession Number:</b> NM_008366	<b>Purification Method:</b> Protein A purification
<b>Size:</b> 100ug , Concentration: 1 mg/ml by Nanodrop;	<b>GeneID (NCBI):</b> 16183	<b>CloneNo.:</b> 240358A4
<b>Source:</b> Rabbit	<b>UNIPROT ID:</b> P04351	
<b>Isotype:</b> IgG	<b>Full Name:</b> interleukin 2	
	<b>Calculated MW:</b> 19 kDa	

## Applications

**Tested Applications:**  
Cytometric bead array, Sandwich ELISA, Indirect ELISA,  
Sample test

**Species Specificity:**  
mouse

## Product Information

83547-1-PBS targets IL-2 as part of a matched antibody pair:

MP00533-1: 83547-1-PBS capture and 83547-2-PBS detection (validated in Cytometric bead array)

MP00533-3: 98055-1-PBS capture and 83547-1-PBS detection (validated in Sandwich ELISA)

Unconjugated rabbit recombinant monoclonal antibody in PBS only (BSA and azide free) storage buffer at a concentration of 1 mg/mL, ready for conjugation. Created using Proteintech's proprietary in-house recombinant technology. Recombinant production enables unrivalled batch-to-batch consistency, easy scale-up, and future security of supply.

This conjugation ready format makes antibodies ideal for use in many applications including: ELISAs, multiplex assays requiring matched pairs, mass cytometry, and multiplex imaging applications. Antibody use should be optimized by the end user for each application and assay.

## Storage

**Storage:**  
Store at -80°C.  
**Storage Buffer:**  
PBS Only

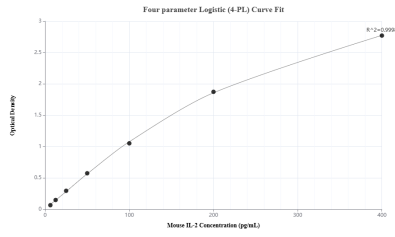
For technical support and original validation data for this product please contact:

T: 1 (888) 4PTGLAB (1-888-478-4522) (toll free  
in USA), or 1(312) 455-8498 (outside USA)

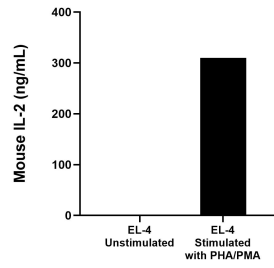
E: [proteintech@ptglab.com](mailto:proteintech@ptglab.com)  
W: [ptglab.com](http://ptglab.com)

**This product is exclusively available under Proteintech Group brand and is not available to purchase from any other manufacturer.**

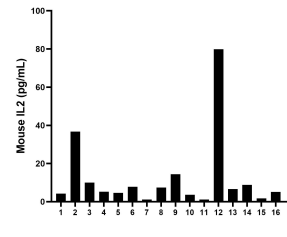
## Selected Validation Data



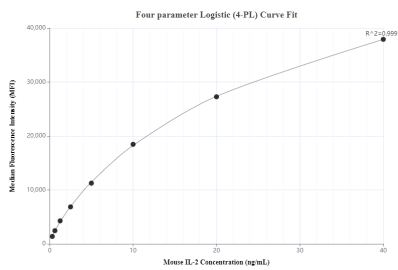
Sandwich ELISA standard curve of MP00533-3, mouse IL-2 Recombinant Matched Antibody Pair - PBS only. 98055-1-PBS was coated to a plate as the capture antibody and incubated with serial dilutions of standard Eg0762. 83547-1-PBS was HRP conjugated as the detection antibody. Range: 6.25-400 pg/mL.



EL-4 mouse lymphoblast cells ( $1 \times 10^6$  cells/mL) were cultured for 3 days in DMEM supplemented with 10% fetal bovine serum and stimulated with 10  $\mu$ g/mL PHA and 10 ng/mL PMA. The mean mouse IL-2 concentration was determined to be 16.1 pg/mL in unstimulated EL-4, 309.9 ng/mL in PHA and PMA stimulated EL-4 supernatant.



Serum of sixteen mice were measured. The mouse IL-2 concentration was determined to be 2.27 pg/mL with a range of 1.1-79.9 pg/mL.



Cytometric bead array standard curve of MP00533-1, MOUSE IL-2 Recombinant Matched Antibody Pair, PBS Only. Capture antibody: 83547-1-PBS. Detection antibody: 83547-2-PBS. Standard: Eg0762. Range: 0.313-40 ng/mL.