

For Research Use Only

FEM1C Recombinant antibody

Catalog Number: 83536-1-RR



Basic Information

Catalog Number: 83536-1-RR	GenBank Accession Number: BC028369	Purification Method: Protein A purification
Size: 100ul , Concentration: 1000 ug/ml by Nanodrop;	GeneID (NCBI): 56929	CloneNo.: 240126G5
Source: Rabbit	UNIPROT ID: Q96JPO	Recommended Dilutions: WB 1:500-1:2000
Isotype: IgG	Full Name: fem-1 homolog c (C. elegans)	
Immunogen Catalog Number: AG5099	Calculated MW: 69 kDa	
	Observed MW: 69 kDa	

Applications

Tested Applications: WB, FC (Intra), ELISA	Positive Controls: WB : HepG2 cells,
Species Specificity: human	

Background Information

Protein fem-1 homolog C (FEM1C) is involved in protein modification and ubiquitination. Probable component of an E3 ubiquitin-protein ligase complex, in which it may act as a substrate recognition subunit. Highly expressed in kidney, cardiac tissue, skeletal muscle and testis. Expressed at lower levels in other tissues, including cartilage. This antibody specifically recognizes the 69kd FEM1C protein.

Storage

Storage:
Store at -20°C. Stable for one year after shipment.
Storage Buffer:
PBS with 0.02% sodium azide and 50% glycerol pH 7.3.
Aliquoting is unnecessary for -20°C storage

*** 20ul sizes contain 0.1% BSA

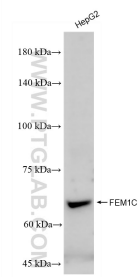
For technical support and original validation data for this product please contact:

T: 1 (888) 4PTGLAB (1-888-478-4522) (toll free in USA), or 1(312) 455-8498 (outside USA)

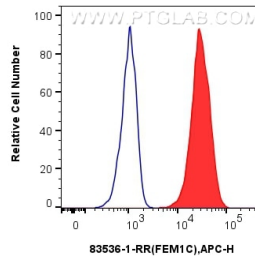
E: proteintech@ptglab.com
W: ptglab.com

This product is exclusively available under Proteintech Group brand and is not available to purchase from any other manufacturer.

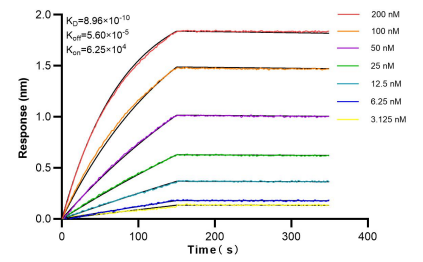
Selected Validation Data



HepG2 cells were subjected to SDS PAGE followed by western blot with 83536-1-RR (FEM1C antibody) at dilution of 1:1000 incubated at room temperature for 1.5 hours.



1×10^6 U2OS cells were intracellularly stained with 0.25 μ g Fem1c Recombinant Antibody (83536-1-RR, Clone:240126G5) and APC-Conjugated Goat Anti-Rabbit IgG(H+L)(red), or 0.25 μ g Isotype Control (blue). Cells were fixed and permeabilized with Transcription Factor Staining Buffer Kit (PF00011).



Biolayer interferometry (BLI) kinetic assays of 83536-1-RR against Human FEM1C were performed. The affinity constant is 0.896 nM.