

For Research Use Only

ERK1/2 Recombinant antibody, PBS Only

Catalog Number:83533-1-PBS



Basic Information

Catalog Number: 83533-1-PBS	GenBank Accession Number: BC013992	Purification Method: Protein A purification
Size: 100ug , Concentration: 1 mg/ml by Nanodrop;	GeneID (NCBI): 5595	CloneNo.: 4P8
Source: Rabbit	UNIPROT ID: P27361	
Isotype: IgG	Full Name: mitogen-activated protein kinase 3	
Immunogen Catalog Number: AG20350	Calculated MW: 43 kDa	
	Observed MW: 38-44 kDa	

Applications

Tested Applications:
WB, IHC, IF/ICC, FC (Intra), ELISA

Species Specificity:
human, mouse, rat

Background Information

ERK1 and ERK2 belongs to the protein kinase superfamily. It is involved in both the initiation and regulation of meiosis, mitosis, and postmitotic functions in differentiated cells by phosphorylating a number of transcription factors such as ELK-1. ERK1/2 catalized the reaction: ATP + a protein = ADP + a phosphoprotein. It is activated by tyrosine phosphorylation in response to INS and NGF. This antibody can recognize both ERK1 and ERK2 with the molecular mass of 38-44 kDa.

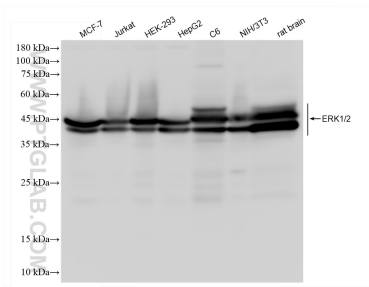
Storage

Storage:
Store at -80°C.
Storage Buffer:
PBS Only

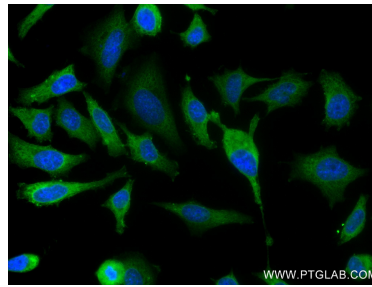
For technical support and original validation data for this product please contact:
T: 1 (888) 4PTGLAB (1-888-478-4522) (toll free in USA), or 1(312) 455-8498 (outside USA) E: proteintech@ptglab.com
W: ptglab.com

This product is exclusively available under Proteintech Group brand and is not available to purchase from any other manufacturer.

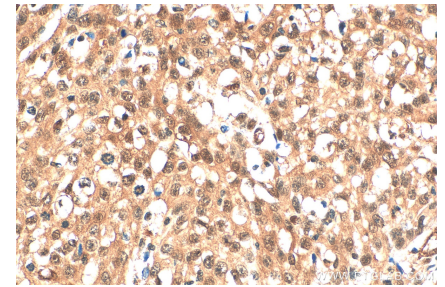
Selected Validation Data



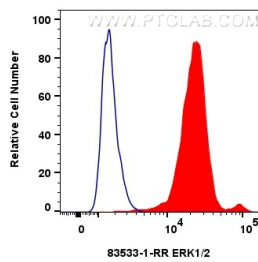
Various lysates were subjected to SDS PAGE followed by western blot with 83533-1-RR (ERK1/2 antibody) at dilution of 1:1000 incubated at room temperature for 1.5 hours. This data was developed using the same antibody clone with 83533-1-PBS in a different storage buffer formulation.



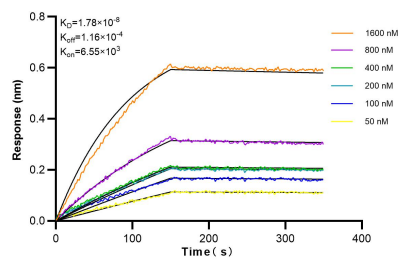
Immunofluorescent analysis of (-20°C Ethanol) fixed HeLa cells using ERK1/2 antibody (83533-1-RR, Clone: 4P8) at dilution of 1:300 and CoraLite® 488-Conjugated AffiniPure Goat Anti-Mouse IgG(H+L) (SA00013-1). This data was developed using the same antibody clone with 83533-1-PBS in a different storage buffer formulation.



Immunohistochemical analysis of paraffin-embedded human cervical cancer tissue slide using 83533-1-RR (ERK1/2 antibody) at dilution of 1:200 (under 40x lens). Heat mediated antigen retrieval with Tris-EDTA buffer (pH 9.0). This data was developed using the same antibody clone with 83533-1-PBS in a different storage buffer formulation.



1x10⁶ HepG2 cells were intracellularly stained with 0.25 ug ERK1/2 Recombinant antibody (83533-1-RR, Clone:4P8) and CoraLite® 488-Conjugated Goat Anti-Rabbit IgG(H+L) (SA00013-2)(red), or 0.25 ug Control Antibody (blue). Cells were fixed and permeabilized with Transcription Factor Staining Buffer Kit (PF00011). This data was developed using the same antibody clone with 83533-1-PBS in a different storage buffer formulation.



Biolayer interferometry (BLI) kinetic assays of 83533-1-RR against Human ERK1/2 were performed. The affinity constant is 17.8 nM.