

For Research Use Only

LDHC Recombinant antibody

Catalog Number: 83526-3-RR



Basic Information

Catalog Number: 83526-3-RR	GenBank Accession Number: NM_002301	Purification Method: Protein A purification
Size: 100ul , Concentration: 1000 ug/ml by Nanodrop;	GeneID (NCBI): 3948	CloneNo.: 240502E10
Source: Rabbit	UNIPROT ID: P07864	Recommended Dilutions: WB 1:1000-1:4000
Isotype: IgG	Full Name: lactate dehydrogenase C	
	Calculated MW: 36 kDa	
	Observed MW: 30 kDa	

Applications

Tested Applications: WB, ELISA	Positive Controls: WB : HepG2 cells,
Species Specificity: Human	

Background Information

LDHC, also named as CT32 and LDH-X, belongs to the LDH/MDH superfamily and LDH family. LDHC is a possible role in sperm motility. LDHC catalyzes the reaction: (S)-lactate + NAD⁺ = pyruvate + NADH. LDHC is a testis-specific isoform. Abnormal LDHC expression is associated with several forms of cancer. The antibody has no cross reaction with LDHA and LDHB.

Storage

Storage:
Store at -20°C. Stable for one year after shipment.
Storage Buffer:
PBS with 0.02% sodium azide and 50% glycerol pH 7.3.
Aliquoting is unnecessary for -20°C storage

*** 20ul sizes contain 0.1% BSA

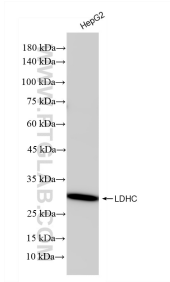
For technical support and original validation data for this product please contact:

T: 1 (888) 4PTGLAB (1-888-478-4522) (toll free in USA), or 1(312) 455-8498 (outside USA)

E: proteintech@ptglab.com
W: ptglab.com

This product is exclusively available under Proteintech Group brand and is not available to purchase from any other manufacturer.

Selected Validation Data



HepG2 cells were subjected to SDS PAGE followed by western blot with 83526-3-RR (LDHC antibody) at dilution of 1:2000 incubated at room temperature for 1.5 hours.