

For Research Use Only

# PSMD1 Recombinant antibody

Catalog Number:83521-4-RR



## Basic Information

|  |  |  |
|--|--|--|
| <b>Catalog Number:</b><br>83521-4-RR                           | <b>GenBank Accession Number:</b><br>BC094720                                       | <b>Purification Method:</b><br>Protein A purification                                      |
| <b>Size:</b><br>100ul , Concentration: 1000 ug/ml by Nanodrop; | <b>GeneID (NCBI):</b><br>5707  | <b>CloneNo.:</b><br>240458C9   |
| <b>Source:</b><br>Rabbit                                       | <b>UNIPROT ID:</b><br>Q99460   | <b>Recommended Dilutions:</b><br>WB 1:5000-1:50000<br>IHC 1:50-1:500<br>IF/ICC 1:150-1:600 |
| <b>Isotype:</b><br>IgG   | <b>Full Name:</b><br>proteasome (prosome, macropain)<br>26S subunit, non-ATPase, 1 |  |
| <b>Immunogen Catalog Number:</b><br>AG12009                    | <b>Calculated MW:</b><br>953 aa, 106 kDa   |  |
|  | <b>Observed MW:</b><br>106 kDa   |  |

## Applications

**Tested Applications:**  
WB, IHC, IF/ICC, FC (Intra), ELISA

**Species Specificity:**  
human, mouse, rat

**Note-IHC: suggested antigen retrieval with TE buffer pH 9.0; (\*) Alternatively, antigen retrieval may be performed with citrate buffer pH 6.0**

### Positive Controls:

**WB :** Jurkat cells, SKOV-3 cells, MCF-7 cells, mouse brain tissue, mouse testis tissue, rat brain tissue

**IHC :** human intrahepatic cholangiocarcinoma tissue,

**IF/ICC :** HeLa cells,

## Background Information

PSMD1 is a component of the 26S proteasome and contributes to its function regulation. PSMD1 performs an important role in the regulation of numerous cellular processes through the degradation of proteins targeted for breakdown through ubiquitin. PSMD1 has been found to be closely related to a variety of cancers such as lung adenocarcinoma and breast cancer.

## Storage

**Storage:**  
Store at -20°C. Stable for one year after shipment.

**Storage Buffer:**  
PBS with 0.02% sodium azide and 50% glycerol pH 7.3.

**Aliquoting is unnecessary for -20°C storage**

\*\*\* 20ul sizes contain 0.1% BSA

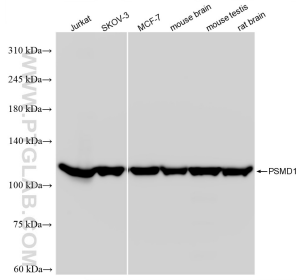
For technical support and original validation data for this product please contact:

T: 1 (888) 4PTGLAB (1-888-478-4522) (toll free in USA), or 1(312) 455-8498 (outside USA)

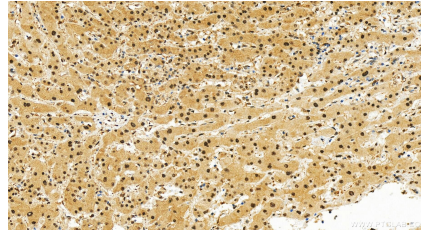
E: [proteintech@ptglab.com](mailto:proteintech@ptglab.com)  
W: [ptglab.com](http://ptglab.com)

**This product is exclusively available under Proteintech Group brand and is not available to purchase from any other manufacturer.**

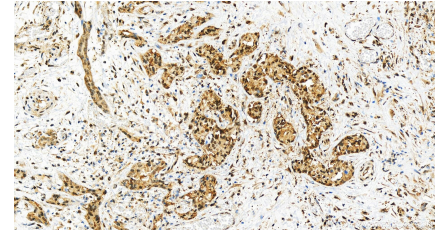
## Selected Validation Data



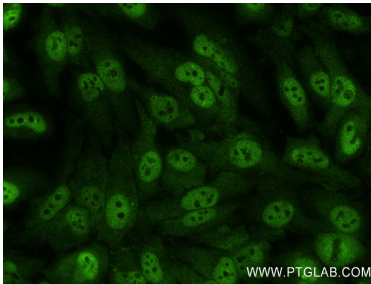
Various lysates were subjected to SDS PAGE followed by western blot with 83521-4-RR (PSMD1 antibody) at dilution of 1:10000 incubated at room temperature for 1.5 hours.



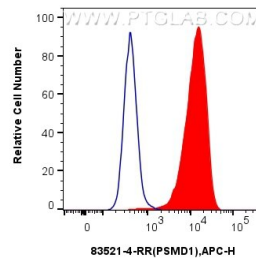
Immunohistochemical analysis of paraffin-embedded human intrahepatic cholangiocarcinoma tissue slide using 83521-4-RR (PSMD1 antibody) at dilution of 1:200 (under 20x lens). Heat mediated antigen retrieval with Tris-EDTA buffer (pH 9.0).



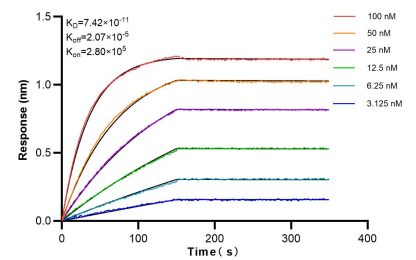
Immunohistochemical analysis of paraffin-embedded human intrahepatic cholangiocarcinoma tissue slide using 83521-4-RR (PSMD1 antibody) at dilution of 1:200 (under 20x lens). Heat mediated antigen retrieval with Tris-EDTA buffer (pH 9.0).



Immunofluorescent analysis of (4% PFA) fixed HeLa cells using PSMD1 antibody (83521-4-RR, Clone: 240458C9) at dilution of 1:300 and CoraLite@488-Conjugated AffiniPure Goat Anti-Rabbit IgG(H+L) (SA00013-2).



$1 \times 10^6$  MCF-7 cells were intracellularly stained with 0.25  $\mu$ g PSMD1 Recombinant antibody (83521-4-RR, Clone:240458C9) and APC-Conjugated AffiniPure Goat Anti-Rabbit IgG(H+L)(red), or 0.25  $\mu$ g Isotype Control (blue). Cells were fixed and permeabilized with Transcription Factor Staining Buffer Kit (PF00011).



Bi-layer interferometry (BLI) kinetic assays of 83521-4-RR against Human PSMD1 were performed. The affinity constant is 74.2 pM.