

For Research Use Only

PSMD1 Recombinant antibody, PBS Only (Capture/Detector)

Catalog Number: 83521-2-PBS



Basic Information

Catalog Number: 83521-2-PBS	GenBank Accession Number: BC094720	Purification Method: Protein A purification
Size: 100ug, Concentration: 1 mg/ml by Nanodrop;	GeneID (NCBI): 5707	CloneNo.: 240458B3
Source: Rabbit	UNIPROT ID: Q99460	
Isotype: IgG	Full Name: proteasome (prosome, macropain) 26S subunit, non-ATPase, 1	
Immunogen Catalog Number: AG12009	Calculated MW: 953 aa, 106 kDa	
	Observed MW: 106 kDa	

Applications

Tested Applications:
WB, IHC, FC (Intra), Cytometric bead array, Sandwich ELISA, Indirect ELISA, Sample test

Species Specificity:
human, mouse, rat

Product Information

83521-2-PBS targets PSMD1 as part of a matched antibody pair:

MP00519-1: 83521-1-PBS capture and 83521-2-PBS detection (validated in Cytometric bead array)

MP00519-3: 83521-2-PBS capture and 83521-5-PBS detection (validated in Sandwich ELISA)

Unconjugated rabbit recombinant monoclonal antibody in PBS only (BSA and azide free) storage buffer at a concentration of 1 mg/mL, ready for conjugation. Created using Proteintech's proprietary in-house recombinant technology. Recombinant production enables unrivalled batch-to-batch consistency, easy scale-up, and future security of supply.

This conjugation ready format makes antibodies ideal for use in many applications including: ELISAs, multiplex assays requiring matched pairs, mass cytometry, and multiplex imaging applications. Antibody use should be optimized by the end user for each application and assay.

Background Information

PSMD1 is a component of the 26S proteasome and contributes to its function regulation. PSMD1 performs an important role in the regulation of numerous cellular processes through the degradation of proteins targeted for breakdown through ubiquitin. PSMD1 has been found to be closely related to a variety of cancers such as lung adenocarcinoma and breast cancer.

Storage

Storage:
Store at -80°C.
Storage Buffer:
PBS Only

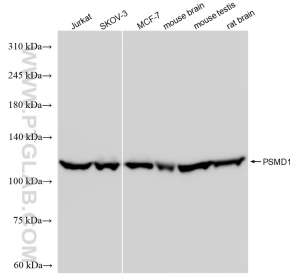
For technical support and original validation data for this product please contact:

T: 1 (888) 4PTGLAB (1-888-478-4522) (toll free in USA), or 1(312) 455-8498 (outside USA)

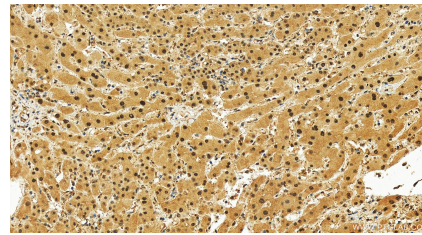
E: proteintech@ptglab.com
W: ptglab.com

This product is exclusively available under Proteintech Group brand and is not available to purchase from any other manufacturer.

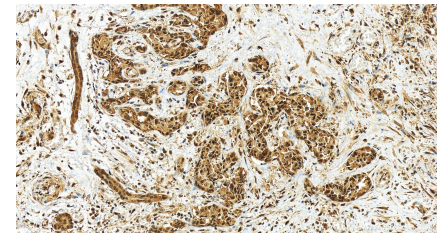
Selected Validation Data



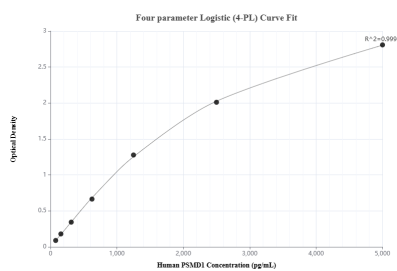
Various lysates were subjected to SDS PAGE followed by western blot with 83521-2-RR (PSMD1 antibody) at dilution of 1:5000 incubated at room temperature for 1.5 hours. This data was developed using the same antibody clone with 83521-2-PBS in a different storage buffer formulation.



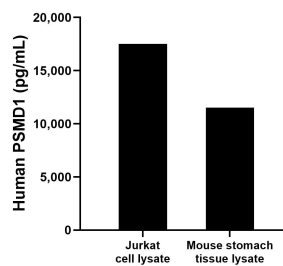
Immunohistochemical analysis of paraffin-embedded human intrahepatic cholangiocarcinoma tissue slide using 83521-2-RR (PSMD1 antibody) at dilution of 1:200 (under 20x lens). Heat mediated antigen retrieval with Tris-EDTA buffer (pH 9.0). This data was developed using the same antibody clone with 83521-2-PBS in a different storage buffer formulation.



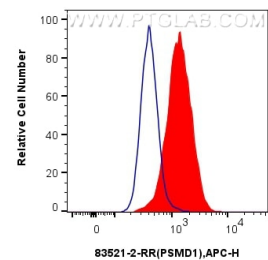
Immunohistochemical analysis of paraffin-embedded human intrahepatic cholangiocarcinoma tissue slide using 83521-2-RR (PSMD1 antibody) at dilution of 1:200 (under 20x lens). Heat mediated antigen retrieval with Tris-EDTA buffer (pH 9.0). This data was developed using the same antibody clone with 83521-2-PBS in a different storage buffer formulation.



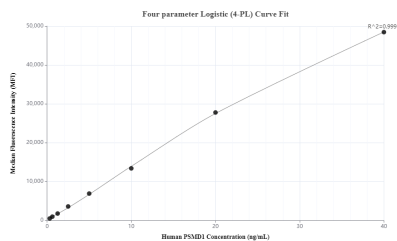
Sandwich ELISA standard curve of MP00519-3, Human PSMD1 Recombinant Matched Antibody Pair - PBS only. 83521-2-PBS was coated to a plate as the capture antibody and incubated with serial dilutions of standard Ag12009. 83521-5-PBS was HRP conjugated as the detection antibody. Range: 78.1-5000 pg/mL



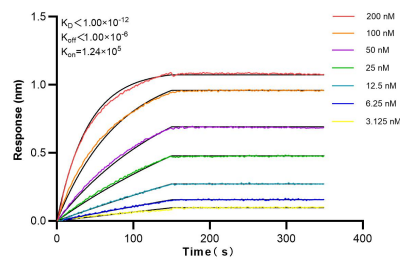
Mouse stomach tissue lysate and Jurkat cell lysate were measured. The human PSMD1 concentration of detected samples was determined to be 11,510.8 pg/mL in mouse stomach lysate (based on a 4.0 mg/mL extract load) and 17,515.2 pg/mL in Jurkat cell lysate (based on a 3.4 mg/mL extract load).



1x10⁶ MCF-7 cells were intracellularly stained with 0.25 ug PSMD1 Recombinant antibody (83521-2-RR, Clone:240458B3) and APC-Conjugated AffiniPure Goat Anti-Rabbit IgG(H+L)(red), or 0.25 ug Isotype Control (blue). Cells were fixed and permeabilized with Transcription Factor Staining Buffer Kit (PF00011). This data was developed using the same antibody clone with 83521-2-PBS in a different storage buffer formulation.



Cytofluorimetric bead array standard curve of MP00519-1, PSMD1 Recombinant Matched Antibody Pair, PBS Only. Capture antibody: 83521-1-PBS. Detection antibody: 83521-2-PBS. Standard: Ag12009. Range: 0.313-40 ng/mL



Biolayer interferometry (BLI) kinetic assays of 83521-2-RR against Human PSMD1 were performed. The affinity constant is below 1 pM.