

For Research Use Only

SOD2 Recombinant antibody, PBS Only (Capture)

Catalog Number: 83519-2-PBS



Basic Information

Catalog Number: 83519-2-PBS	GenBank Accession Number: BC016934	Purification Method: Protein A purification
Size: 100ug , Concentration: 1 mg/ml by Nanodrop;	GeneID (NCBI): 6648	CloneNo.: 240462F8
Source: Rabbit	UNIPROT ID: P04179	
Isotype: IgG	Full Name: superoxide dismutase 2, mitochondrial	
Immunogen Catalog Number: AG21388	Calculated MW: 25 kDa	

Applications

Tested Applications:
IF, Indirect ELISA, Cytometric bead array

Species Specificity:
Human

Product Information

83519-2-PBS targets SOD2 as part of a matched antibody pair:

MP00517-1: 83519-2-PBS capture and 83519-1-PBS detection (validated in Cytometric bead array)

Unconjugated rabbit recombinant monoclonal antibody in PBS only (BSA and azide free) storage buffer at a concentration of 1 mg/mL, ready for conjugation. Created using Proteintech's proprietary in-house recombinant technology. Recombinant production enables unrivalled batch-to-batch consistency, easy scale-up, and future security of supply.

This conjugation ready format makes antibodies ideal for use in many applications including: ELISAs, multiplex assays requiring matched pairs, mass cytometry, and multiplex imaging applications. Antibody use should be optimized by the end user for each application and assay.

Storage

Storage:
Store at -80°C.

Storage Buffer:
PBS Only

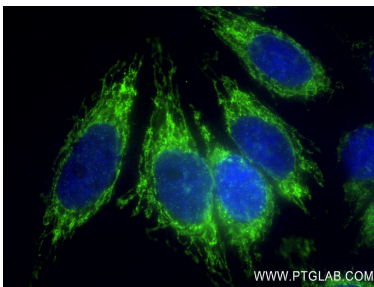
For technical support and original validation data for this product please contact:

T: 1 (888) 4PTGLAB (1-888-478-4522) (toll free in USA), or 1(312) 455-8498 (outside USA)

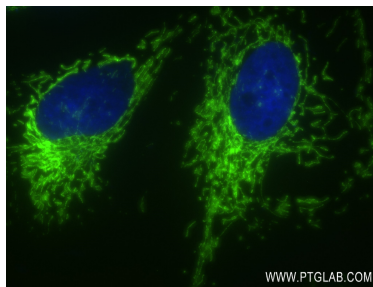
E: proteintech@ptglab.com
W: ptglab.com

This product is exclusively available under Proteintech Group brand and is not available to purchase from any other manufacturer.

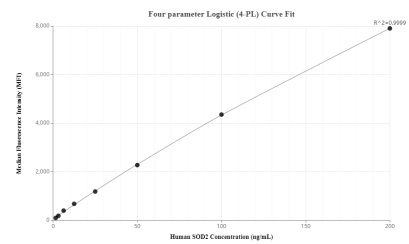
Selected Validation Data



Immunofluorescent analysis of (4% PFA) fixed HepG2 cells using SOD2 antibody (83519-2-RR, Clone: 240462F8) at dilution of 1:250 and CoraLite@488-Conjugated AffiniPure Goat Anti-Rabbit IgG(H+L) (SA00013-2). This data was developed using the same antibody clone with 83519-2-PBS in a different storage buffer formulation.



Immunofluorescent analysis of (4% PFA) fixed HeLa cells using SOD2 antibody (83519-2-RR, Clone: 240462F8) at dilution of 1:250 and CoraLite@488-Conjugated AffiniPure Goat Anti-Rabbit IgG(H+L) (SA00013-2). This data was developed using the same antibody clone with 83519-2-PBS in a different storage buffer formulation.



Cytometric bead array standard curve of MP00517-1, SOD2 Recombinant Matched Antibody Pair, PBS Only. Capture antibody: 83519-2-PBS. Detection antibody: 83519-1-PBS. Standard: Ag21388. Range: 1.56-200 ng/mL.