

For Research Use Only

# RPS11 Recombinant antibody

Catalog Number: 83517-3-RR



## Basic Information

<b>Catalog Number:</b> 83517-3-RR	<b>GenBank Accession Number:</b> BC007945	<b>Purification Method:</b> Protein A purification
<b>Size:</b> 100ul , Concentration: 1000 ug/ml by Nanodrop;	<b>GeneID (NCBI):</b> 6205	<b>CloneNo.:</b> 240327D11
<b>Source:</b> Rabbit	<b>UNIPROT ID:</b> P62280	<b>Recommended Dilutions:</b> WB 1:5000-1:50000 IHC 1:200-1:800 IF/ICC 1:125-1:500
<b>Isotype:</b> IgG	<b>Full Name:</b> ribosomal protein S11	
<b>Immunogen Catalog Number:</b> AG34848	<b>Calculated MW:</b> 158 aa, 18 kDa	
	<b>Observed MW:</b> 18 kDa	

## Applications

**Tested Applications:**  
WB, IHC, IF/ICC, FC (Intra), ELISA

**Species Specificity:**  
human, mouse, rat

**Note-IHC: suggested antigen retrieval with TE buffer pH 9.0; (\*) Alternatively, antigen retrieval may be performed with citrate buffer pH 6.0**

**Positive Controls:**

**WB :** ROS1728 cells, mouse testis tissue, rat testis tissue

**IHC :** mouse testis tissue, human stomach cancer tissue

**IF/ICC :** HepG2 cells,

## Background Information

RPS11 is a ribosomal protein involved in ribosome biogenesis. It is a component of the small ribosomal subunit. The ribosome is a large ribonucleoprotein complex responsible for the synthesis of proteins in the cell.

## Storage

**Storage:**  
Store at -20°C. Stable for one year after shipment.  
**Storage Buffer:**  
PBS with 0.02% sodium azide and 50% glycerol pH 7.3.  
Aliquoting is unnecessary for -20°C storage

**\*\*\* 20ul sizes contain 0.1% BSA**

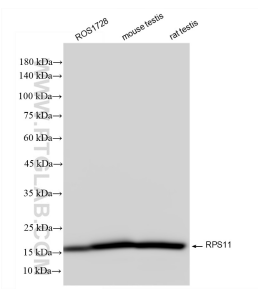
For technical support and original validation data for this product please contact:

T: 1 (888) 4PTGLAB (1-888-478-4522) (toll free in USA), or 1(312) 455-8498 (outside USA)

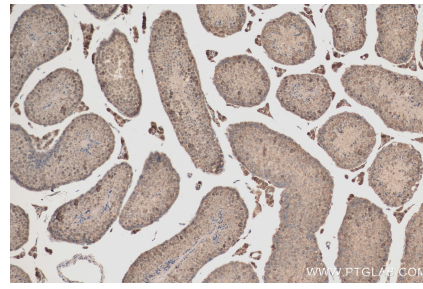
E: proteintech@ptglab.com  
W: ptglab.com

**This product is exclusively available under Proteintech Group brand and is not available to purchase from any other manufacturer.**

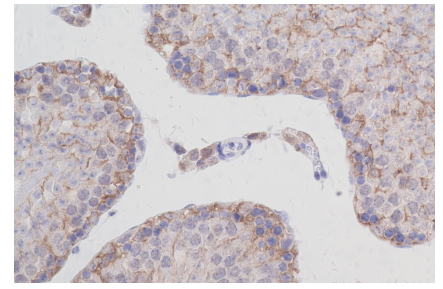
## Selected Validation Data



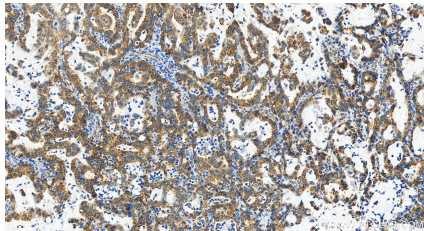
Various lysates were subjected to SDS PAGE followed by western blot with 83517-3-RR (RPS11 antibody) at dilution of 1:20000 incubated at room temperature for 1.5 hours.



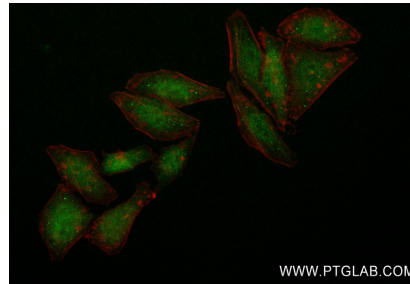
Immunohistochemical analysis of paraffin-embedded mouse testis tissue slide using 83517-3-RR (RPS11 antibody) at dilution of 1:400 (under 10x lens). Heat mediated antigen retrieval with Tris-EDTA buffer (pH 9.0).



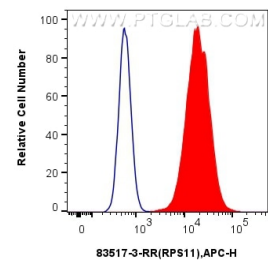
Immunohistochemical analysis of paraffin-embedded mouse testis tissue slide using 83517-3-RR (RPS11 antibody) at dilution of 1:400 (under 40x lens). Heat mediated antigen retrieval with Tris-EDTA buffer (pH 9.0).



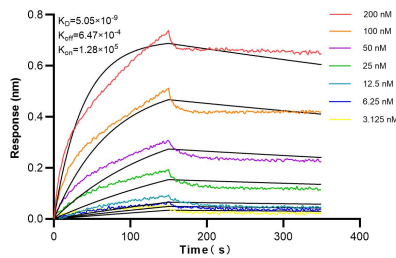
Immunohistochemical analysis of paraffin-embedded human stomach cancer tissue slide using 83517-3-RR (RPS11 antibody) at dilution of 1:4000 (under 20x lens). Heat mediated antigen retrieval with Tris-EDTA buffer(pH9).



Immunofluorescent analysis of (4% PFA) fixed HepG2 cells using RPS11 antibody (83517-3-RR, Clone: 240327D11) at dilution of 1:250 and Multi-rAb CoraLite® Plus 488-Goat Anti-Rabbit Recombinant Secondary Antibody (H+L) (RGAR002), CL594-Phalloidin (red).



$1 \times 10^6$  MCF-7 cells were intracellularly stained with 0.25 ug RPS11 Recombinant antibody (83517-3-RR, Clone:240327D11) and APC-Conjugated AffiniPure Goat Anti-Rabbit IgG(H+L)(red), or 0.25 ug Isotype Control (blue). Cells were fixed with 4% PFA and permeabilized with Flow Cytometry Perm Buffer (PF00011-C).



Biolayer interferometry (BLI) kinetic assays of 83517-3-RR against Human RPS11 were performed. The affinity constant is 5.05 nM.