

For Research Use Only

PD-1/CD279 Recombinant antibody

Catalog Number:83516-6-RR



Basic Information

Catalog Number: 83516-6-RR	GenBank Accession Number: NM_008798.2	Purification Method: Protein A purification
Size: 100ul , Concentration: 800 ug/ml by Nanodrop;	GeneID (NCBI): 18566	CloneNo.: 240390D6
Source: Rabbit	UNIPROT ID: Q02242	Recommended Dilutions: WB 1:2000-1:16000
Isotype: IgG	Full Name: programmed cell death 1	
	Calculated MW: 32 kDa	
	Observed MW: 55 kDa	

Applications

Tested Applications: WB, ELISA	Positive Controls: WB : EL-4 cells, RAW 264.7 cells, mouse thymus tissue
Species Specificity: mouse	

Background Information

Programmed cell death 1 (PD-1, also known as CD279) is an immunoinhibitory receptor that belongs to the CD28/CTLA-4 subfamily of the Ig superfamily. It is a 288 amino acid (aa) type I transmembrane protein composed of one Ig superfamily domain, a stalk, a transmembrane domain, and an intracellular domain containing an immunoreceptor tyrosine-based inhibitory motif (ITIM) as well as an immunoreceptor tyrosine-based switch motif (ITSM) (PMID: 18173375). PD-1 is expressed during thymic development and is induced in a variety of hematopoietic cells in the periphery by antigen receptor signaling and cytokines (PMID: 20636820). Engagement of PD-1 by its ligands PD-L1 or PD-L2 transduces a signal that inhibits T-cell proliferation, cytokine production, and cytolytic function (PMID: 19426218). It is critical for the regulation of T cell function during immunity and tolerance. Blockade of PD-1 can overcome immune resistance and also has been shown to have antitumor activity (PMID: 22658127; 23169436). It has been reported that PD-1 is heavily glycosylated and migrates with an apparent molecular mass of 47-55 kDa on SDS-PAGE, which is larger than its predicted mass of 32 kDa (PMID: 8671665; 17640856; 17003438).

Storage

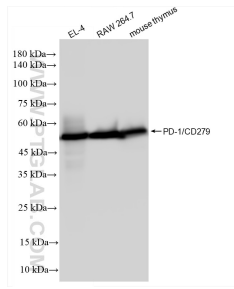
Storage:
Store at -20°C. Stable for one year after shipment.
Storage Buffer:
PBS with 0.02% sodium azide and 50% glycerol pH 7.3.
Aliquoting is unnecessary for -20°C storage

*** 20ul sizes contain 0.1% BSA

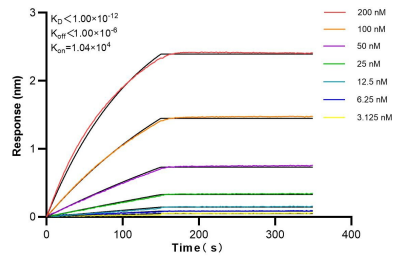
For technical support and original validation data for this product please contact:
T: 1 (888) 4PTGLAB (1-888-478-4522) (toll free in USA), or 1(312) 455-8498 (outside USA)
E: proteintech@ptglab.com
W: ptglab.com

This product is exclusively available under Proteintech Group brand and is not available to purchase from any other manufacturer.

Selected Validation Data



Various lysates were subjected to SDS PAGE followed by western blot with 83516-6-RR (PD-1/CD279 antibody) at dilution of 1:8000 incubated at room temperature for 1.5 hours.



Biolayer interferometry (BLI) kinetic assays of 83516-6-RR against Mouse PD-1/CD279 were performed. The affinity constant is below 1 pM.