

For Research Use Only

MRPL40 Recombinant antibody, PBS Only

Catalog Number: 83515-4-PBS



Basic Information

Catalog Number: 83515-4-PBS	GenBank Accession Number: BC009707	Purification Method: Protein A purification
Size: 100ug , Concentration: 1 mg/ml by Nanodrop;	GeneID (NCBI): 64976	CloneNo.: 240506A9
Source: Rabbit	UNIPROT ID: Q9NQ50	
Isotype: IgG	Full Name: mitochondrial ribosomal protein L40	
Immunogen Catalog Number: AG10341	Calculated MW: 206 aa, 24 kDa	
	Observed MW: 18-24 kDa	

Applications

Tested Applications:
WB, IHC, IF/ICC, ELISA

Species Specificity:
human

Background Information

MRPL40, also known as NLVCF and URIM, belongs to the mitochondrion-specific ribosomal protein mL40 family. MRPL40 encodes the mitochondrial ribosomal protein L40 for the larger 39S subunit of mitochondrial ribosomes. MRPL40 is widely expressed in human organs and tissues, including the heart, brain, placenta, lung, liver, skeletal muscle, kidney, pancreas, spleen, thymus, prostate, ovary, small intestine, colon, peripheral blood lymphocyte (PBL), and testis. MRPL40 is also expressed in human fetuses and mouse embryos, suggesting its important role in fetal development (PMID: 36891938).

Storage

Storage:
Store at -80°C.

Storage Buffer:
PBS Only

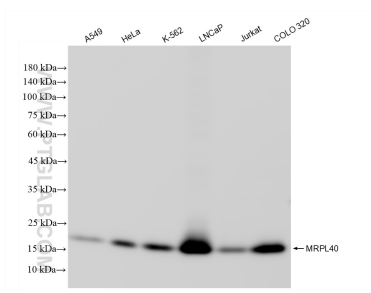
For technical support and original validation data for this product please contact:

T: 1 (888) 4PTGLAB (1-888-478-4522) (toll free in USA), or 1(312) 455-8498 (outside USA)

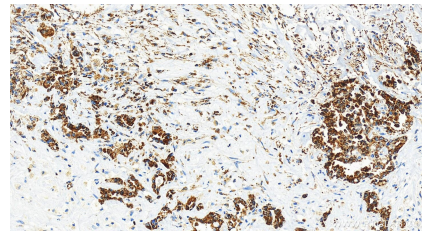
E: proteintech@ptglab.com
W: ptglab.com

This product is exclusively available under Proteintech Group brand and is not available to purchase from any other manufacturer.

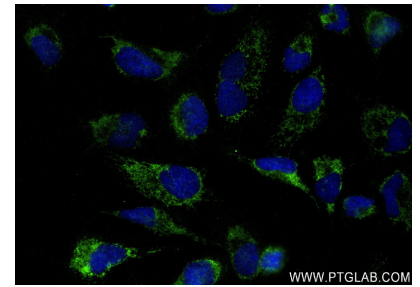
Selected Validation Data



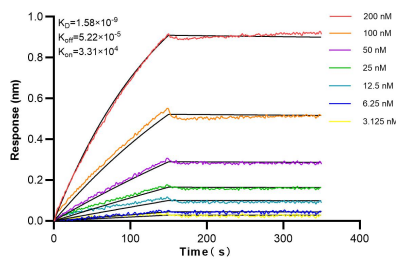
Various lysates were subjected to SDS PAGE followed by western blot with 83515-4-RR (MRPL40 antibody) at dilution of 1:10000 incubated at room temperature for 1.5 hours. This data was developed using the same antibody clone with 83515-4-PBS in a different storage buffer formulation.



Immunohistochemical analysis of paraffin-embedded human intrahepatic cholangiocarcinoma tissue slide using 83515-4-RR (MRPL40 antibody) at dilution of 1:200 (under 20x lens). Heat mediated antigen retrieval with Tris-EDTA buffer (pH 9.0). This data was developed using the same antibody clone with 83515-4-PBS in a different storage buffer formulation.



Immunofluorescent analysis of (4% PFA) fixed HeLa cells using MRPL40 antibody (83515-4-RR, Clone: 240506A9) at dilution of 1:400 and CoraLite®488-Conjugated AffiniPure Goat Anti-Rabbit IgG(H+L) (SA00013-2). This data was developed using the same antibody clone with 83515-4-PBS in a different storage buffer formulation.



Bi-layer interferometry (BLI) kinetic assays of 83515-4-RR against Human MRPL40 were performed. The affinity constant is 1.56 nM.