

For Research Use Only

# CD4 Recombinant antibody, PBS Only (Capture/Detector)



Catalog Number: 83513-4-PBS

## Basic Information

<b>Catalog Number:</b> 83513-4-PBS	<b>GenBank Accession Number:</b> BC025782	<b>Purification Method:</b> Protein A purification
<b>Size:</b> 100ug, Concentration: 1 mg/ml by Nanodrop;	<b>GeneID (NCBI):</b> 920	<b>CloneNo.:</b> 240427B7
<b>Source:</b> Rabbit	<b>ENSEMBL Gene ID:</b> ENSG00000010610	
<b>Isotype:</b> IgG	<b>UNIPROT ID:</b> P01730	
	<b>Full Name:</b> CD4 molecule	
	<b>Calculated MW:</b> 55 kDa	

## Applications

**Tested Applications:**  
Cytometric bead array, Sandwich ELISA, Indirect ELISA, Sample test

**Species Specificity:**  
human

## Product Information

83513-4-PBS targets CD4 as part of a matched antibody pair:

MP00503-2: 83513-3-PBS capture and 83513-4-PBS detection (validated in Cytometric bead array, Sandwich ELISA)

MP00503-3: 83513-4-PBS capture and 83513-2-PBS detection (validated in Cytometric bead array)

Unconjugated rabbit recombinant monoclonal antibody in PBS only (BSA and azide free) storage buffer at a concentration of 1 mg/mL, ready for conjugation. Created using Proteintech's proprietary in-house recombinant technology. Recombinant production enables unrivalled batch-to-batch consistency, easy scale-up, and future security of supply.

This conjugation ready format makes antibodies ideal for use in many applications including: ELISAs, multiplex assays requiring matched pairs, mass cytometry, and multiplex imaging applications. Antibody use should be optimized by the end user for each application and assay.

## Storage

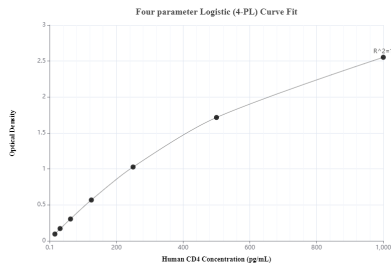
**Storage:**  
Store at -80°C.

**Storage Buffer:**  
PBS Only

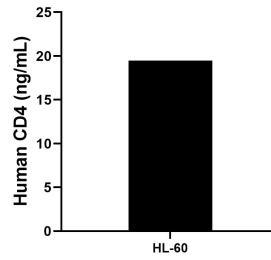
For technical support and original validation data for this product please contact:  
T: 1 (888) 4PTGLAB (1-888-478-4522) (toll free in USA), or 1(312) 455-8498 (outside USA)      E: proteintech@ptglab.com  
W: ptglab.com

**This product is exclusively available under Proteintech Group brand and is not available to purchase from any other manufacturer.**

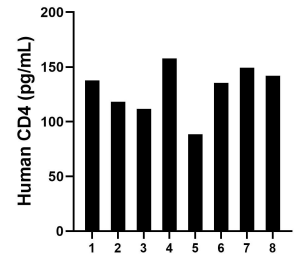
## Selected Validation Data



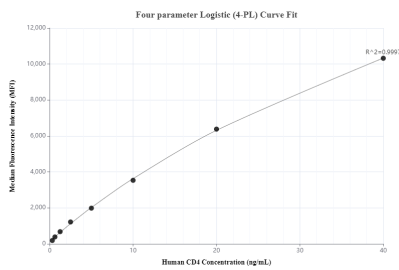
Sandwich ELISA standard curve of MP00503-2, CD4 Recombinant Matched Antibody Pair - PBS only. 83513-3-PBS was coated to a plate as the capture antibody and incubated with serial dilutions of standard Eg0333.83513-4-PBS was HRP conjugated as the detection antibody. Range: 15.6-1000 pg/mL



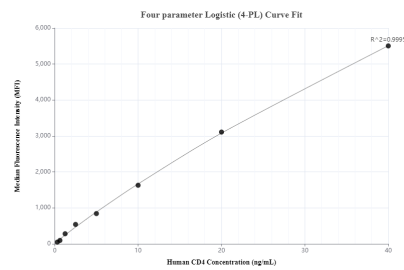
The mean CD4 concentration was determined to be 14.49 ng/mL in HL-60 cell extract based on a 5.6 mg/mL extract load.



Serum of eight individual healthy human donors was measured. The CD4 concentration of detected samples was determined to be 130 pg/mL with a range of 88.46 - 157.66 pg/mL.



Cytometric bead array standard curve of MP00503-2, CD4 Recombinant Matched Antibody Pair, PBS Only. Capture antibody: 83513-3-PBS. Detection antibody: 83513-4-PBS. Standard: Eg0333. Range: 0.313-40 ng/mL



Cytometric bead array standard curve of MP00503-3, CD4 Recombinant Matched Antibody Pair, PBS Only. Capture antibody: 83513-4-PBS. Detection antibody: 83513-2-PBS. Standard: Eg0333. Range: 0.313-40 ng/mL