

For Research Use Only

CD4 Recombinant antibody, PBS Only (Capture)



Catalog Number: 83513-3-PBS

Basic Information

Catalog Number: 83513-3-PBS	GenBank Accession Number: BC025782	Purification Method: Protein A purification
Size: 100ug , Concentration: 1 mg/ml by Nanodrop;	GeneID (NCBI): 920	CloneNo.: 240427E10
Source: Rabbit	ENSEMBL Gene ID: ENSG00000010610	
Isotype: IgG	UNIPROT ID: P01730	
	Full Name: CD4 molecule	
	Calculated MW: 55 kDa	

Applications

Tested Applications:
Cytometric bead array, Sandwich ELISA, Indirect ELISA, Sample test

Species Specificity:
human

Product Information

83513-3-PBS targets CD4 as part of a matched antibody pair:

MP00503-2: 83513-3-PBS capture and 83513-4-PBS detection (validated in Cytometric bead array, Sandwich ELISA)

Unconjugated rabbit recombinant monoclonal antibody in PBS only (BSA and azide free) storage buffer at a concentration of 1 mg/mL, ready for conjugation. Created using Proteintech's proprietary in-house recombinant technology. Recombinant production enables unrivalled batch-to-batch consistency, easy scale-up, and future security of supply.

This conjugation ready format makes antibodies ideal for use in many applications including: ELISAs, multiplex assays requiring matched pairs, mass cytometry, and multiplex imaging applications. Antibody use should be optimized by the end user for each application and assay.

Storage

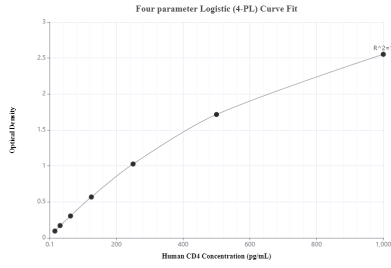
Storage:
Store at -80°C.

Storage Buffer:
PBS Only

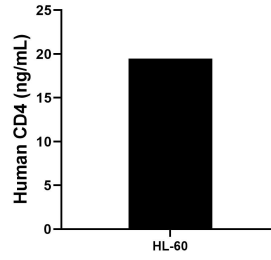
For technical support and original validation data for this product please contact:
T: 1 (888) 4PTGLAB (1-888-478-4522) (toll free in USA), or 1(312) 455-8498 (outside USA) E: proteintech@ptglab.com
W: ptglab.com

This product is exclusively available under Proteintech Group brand and is not available to purchase from any other manufacturer.

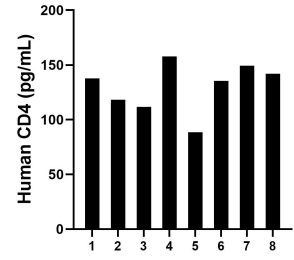
Selected Validation Data



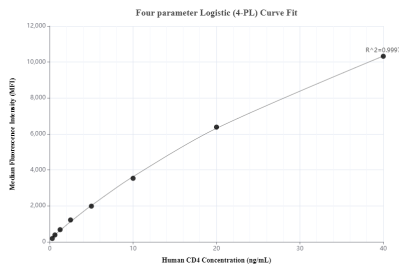
Sandwich ELISA standard curve of MP00503-2, CD4 Recombinant Matched Antibody Pair - PBS only. 83513-3-PBS was coated to a plate as the capture antibody and incubated with serial dilutions of standard Eg0333.83513-4-PBS was HRP conjugated as the detection antibody. Range: 15.6-1000 pg/mL



The mean CD4 concentration was determined to be 14.49 ng/mL in HL-60 cell extract based on a 5.6 mg/mL extract load.



Serum of eight individual healthy human donors was measured. The CD4 concentration of detected samples was determined to be 130 pg/mL with a range of 88.46 - 157.66 pg/mL.



Cytometric bead array standard curve of MP00503-2, CD4 Recombinant Matched Antibody Pair, PBS Only. Capture antibody: 83513-3-PBS. Detection antibody: 83513-4-PBS. Standard: Eg0333. Range: 0.313-40 ng/mL