

For Research Use Only

# MED21 Recombinant antibody

Catalog Number: 83510-1-RR

Featured Product



## Basic Information

**Catalog Number:**

83510-1-RR

**Size:**

100ul, Concentration: 1000 ug/ml by Nanodrop;

**Source:**

Rabbit

**Isotype:**

IgG

**Immunogen Catalog Number:**

AG8568

**GenBank Accession Number:**

BC008380

**GeneID (NCBI):**

9412

**UNIPROT ID:**

Q13503

**Full Name:**

mediator complex subunit 21

**Calculated MW:**

144 aa, 16 kDa

**Observed MW:**

13-16 kDa

**Purification Method:**

Protein A purification

**CloneNo.:**

240419E2

**Recommended Dilutions:**

WB 1:2000-1:10000

## Applications

**Tested Applications:**

WB, FC (Intra), ELISA

**Species Specificity:**

human

**Positive Controls:**

WB : HeLa cells, HepG2 cells, L02 cells, HEK-293T cells

## Background Information

MED21, also known as SRB7 and SURB7, belongs to the Mediator complex subunit 21 family. MED21 is a small essential subunit of the middle domain of the Mediator, which is conserved in all eukaryotes. MED21 is thought to play an important role in transcriptional activation and repression. MED21 regulates the transcription of nearly all RNA polymerase II-dependent genes (PMID: 16758199, PMID: 30559736).

## Storage

**Storage:**

Store at -20°C. Stable for one year after shipment.

**Storage Buffer:**

PBS with 0.02% sodium azide and 50% glycerol pH 7.3.

Aliquoting is unnecessary for -20°C storage

\*\*\* 20ul sizes contain 0.1% BSA

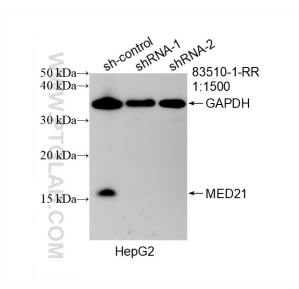
For technical support and original validation data for this product please contact:

T: 1 (888) 4PTGLAB (1-888-478-4522) (toll free in USA), or 1(312) 455-8498 (outside USA)

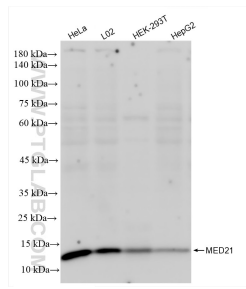
E: [proteintech@ptglab.com](mailto:proteintech@ptglab.com)  
W: [ptglab.com](http://ptglab.com)

This product is exclusively available under Proteintech Group brand and is not available to purchase from any other manufacturer.

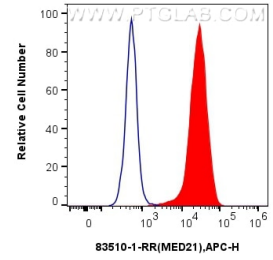
## Selected Validation Data



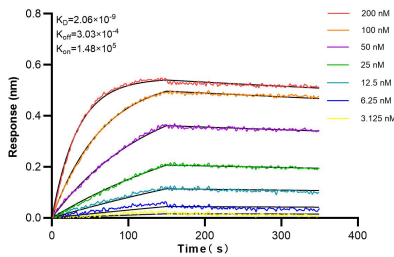
WB result of MED21 antibody (83510-1-RR; 1:1500; incubated at room temperature for 1.5 hours) with sh-Control and sh-MED21 transfected HepG2 cells.



Various lysates were subjected to SDS PAGE followed by western blot with 83510-1-RR (MED21 antibody) at dilution of 1:5000 incubated at room temperature for 1.5 hours.



$1 \times 10^6$  HeLa cells were intracellularly stained with 0.25 ug MED21 Recombinant antibody (83510-1-RR, Clone:240419E2) and APC-Conjugated AffiniPure Goat Anti-Rabbit IgG(H+L)(red), or 0.25 ug Isotype Control (blue). Cells were fixed and permeabilized with Transcription Factor Staining Buffer Kit (PF00011).



Biolayer interferometry (BLI) kinetic assays of 83510-1-RR against Human MED21 were performed. The affinity constant is 2.06 nM.