

For Research Use Only

MDC1 Recombinant antibody

Catalog Number:83496-1-RR



Basic Information

Catalog Number: 83496-1-RR	GenBank Accession Number: BC152556	Purification Method: Protein A purification
Size: 100ul , Concentration: 1000 ug/ml by Nanodrop;	GeneID (NCBI): 9656	CloneNo.: 240469D5
Source: Rabbit	UNIPROT ID: Q14676	Recommended Dilutions: WB 1:500-1:2000 IF/ICC 1:150-1:600
Isotype: IgG	Full Name: mediator of DNA damage checkpoint 1	
Immunogen Catalog Number: AG20135	Calculated MW: 2089 aa, 227 kDa	
	Observed MW: 260-320 kDa	

Applications

Tested Applications:
WB, IF/ICC, ELISA

Species Specificity:
human

Positive Controls:
WB : human testis tissue, HeLa cells, HEK-293 cells, MCF-7 cells, K-562 cells, PC-3 cells

IF/ICC : HeLa cells,

Background Information

MDC1, also named as KIAA0170 or NFB1, is a 2089 amino acid protein, which contains two BRCT domains and one FHA domain. MDC1 localizes in the nucleus and is highly expressed in testis. MDC1 is required for checkpoint mediated cell cycle arrest in response to DNA damage within both the S phase and G2/M phases of the cell cycle. MDC1 may serve as a scaffold for the recruitment of DNA repair and signal transduction proteins to discrete foci of DNA damage marked.

Storage

Storage:
Store at -20°C. Stable for one year after shipment.

Storage Buffer:
PBS with 0.02% sodium azide and 50% glycerol pH 7.3.

Aliquoting is unnecessary for -20°C storage

*** 20ul sizes contain 0.1% BSA

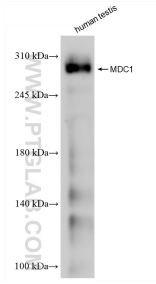
For technical support and original validation data for this product please contact:

T: 1 (888) 4PTGLAB (1-888-478-4522) (toll free in USA), or 1(312) 455-8498 (outside USA)

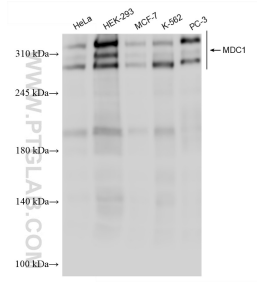
E: proteintech@ptglab.com
W: ptglab.com

This product is exclusively available under Proteintech Group brand and is not available to purchase from any other manufacturer.

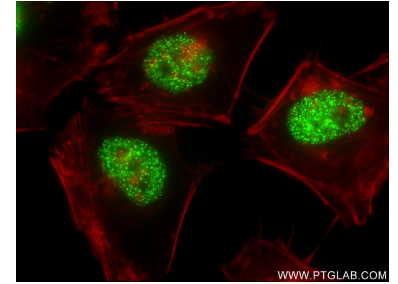
Selected Validation Data



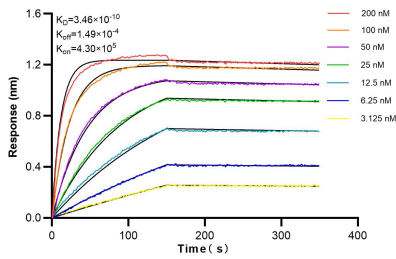
human testis tissue were subjected to SDS PAGE followed by western blot with 83496-1-RR (MDC1 antibody) at dilution of 1:1000 incubated at room temperature for 1.5 hours.



Various lysates were subjected to SDS PAGE followed by western blot with 83496-1-RR (MDC1 antibody) at dilution of 1:1000 incubated at room temperature for 1.5 hours.



Immunofluorescent analysis of (4% PFA) fixed HeLa cells using MDC1 antibody (83496-1-RR, Clone: 240469D5) at dilution of 1:300 and CoraLite@488-Conjugated Goat Anti-Rabbit IgG(H+L) (SA00013-2), CL594-Phalloidin (red).



Biolayer interferometry (BLI) kinetic assays of 83496-1-RR against Human MDC1 were performed. The affinity constant is 0.346 nM.