

For Research Use Only

MDC1 Recombinant antibody, PBS Only (Detector)

Catalog Number: 83496-1-PBS



Basic Information

Catalog Number: 83496-1-PBS	GenBank Accession Number: BC152556	Purification Method: Protein A purification
Size: 100ug, Concentration: 1 mg/ml by Nanodrop;	GeneID (NCBI): 9656	CloneNo.: 240469D5
Source: Rabbit	UNIPROT ID: Q14676	
Isotype: IgG	Full Name: mediator of DNA damage checkpoint 1	
Immunogen Catalog Number: AG20135	Calculated MW: 2089 aa, 227 kDa	

Applications

Tested Applications:
WB, IF/ICC, Cytometric bead array, Sandwich ELISA, Indirect ELISA, Sample test

Species Specificity:
human

Product Information

83496-1-PBS targets MDC1 as part of a matched antibody pair:

MP00487-1: 83496-5-PBS capture and 83496-1-PBS detection (validated in Cytometric bead array, Sandwich ELISA)

MP00487-3: 83496-2-PBS capture and 83496-1-PBS detection (validated in Cytometric bead array)

Unconjugated rabbit recombinant monoclonal antibody in PBS only (BSA and azide free) storage buffer at a concentration of 1 mg/mL, ready for conjugation. Created using Proteintech's proprietary in-house recombinant technology. Recombinant production enables unrivalled batch-to-batch consistency, easy scale-up, and future security of supply.

This conjugation ready format makes antibodies ideal for use in many applications including: ELISAs, multiplex assays requiring matched pairs, mass cytometry, and multiplex imaging applications. Antibody use should be optimized by the end user for each application and assay.

Storage

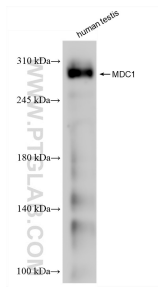
Storage:
Store at -80°C.

Storage Buffer:
PBS Only

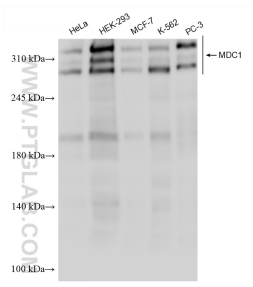
For technical support and original validation data for this product please contact:
T: 1 (888) 4PTGLAB (1-888-478-4522) (toll free in USA), or 1(312) 455-8498 (outside USA) E: proteintech@ptglab.com
W: ptglab.com

This product is exclusively available under Proteintech Group brand and is not available to purchase from any other manufacturer.

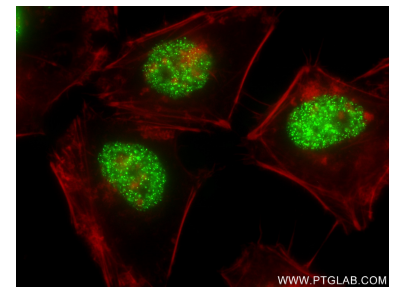
Selected Validation Data



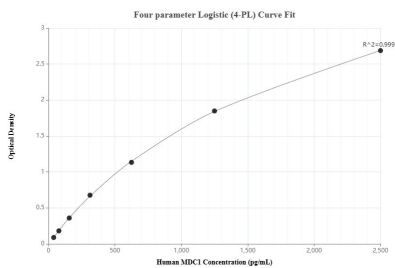
human testis tissue were subjected to SDS PAGE followed by western blot with 83496-1-RR (MDC1 antibody) at dilution of 1:1000 incubated at room temperature for 1.5 hours. This data was developed using the same antibody clone with 83496-1-PBS in a different storage buffer formulation.



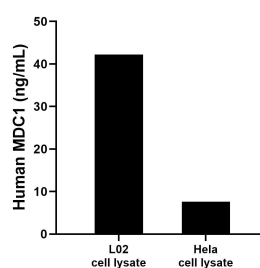
Various lysates were subjected to SDS PAGE followed by western blot with 83496-1-RR (MDC1 antibody) at dilution of 1:1000 incubated at room temperature for 1.5 hours. This data was developed using the same antibody clone with 83496-1-PBS in a different storage buffer formulation.



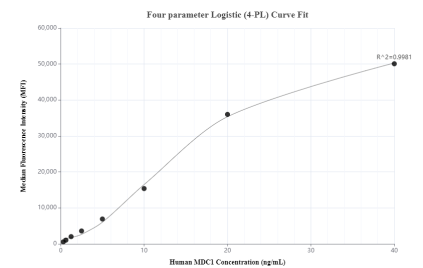
Immunofluorescent analysis of (4% PFA) fixed HeLa cells using MDC1 antibody (83496-1-RR, Clone: 240469D5) at dilution of 1:300 and CoraLite@488-Conjugated AffiniPure Goat Anti-Rabbit IgG(H+L) (SA00013-2), CL594-Phalloidin (red). This data was developed using the same antibody clone with 83496-1-PBS in a different storage buffer formulation.



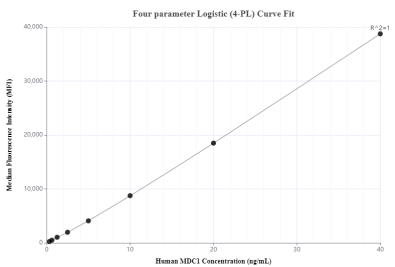
Sandwich ELISA standard curve of MP00487-1, Human MDC1 Recombinant Matched Antibody Pair - PBS only. 83496-5-PBS was coated to a plate as the capture antibody and incubated with serial dilutions of standard Ag20135. 83496-1-PBS was HRP conjugated as the detection antibody. Range: 39.06-2500 pg/mL



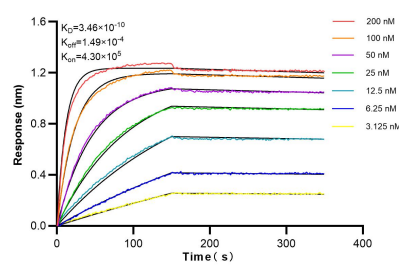
L02 and HeLa cell lysate were measured. The human MDC1 concentration of detected samples was determined to be 42.2 ng/mL (based on a 2.6 mg/mL extract load) in L02 cell lysate and 7.6 ng/mL (based on a 1.2 mg/mL extract load) in HeLa cell lysate.



Cytometric bead array standard curve of MP00487-1, MDC1 Recombinant Matched Antibody Pair, PBS Only. Capture antibody: 83496-5-PBS. Detection antibody: 83496-1-PBS. Standard: Ag20135. Range: 0.313-40 ng/mL.



Cytometric bead array standard curve of MP00487-3, MDC1 Recombinant Matched Antibody Pair, PBS Only. Capture antibody: 83496-2-PBS. Detection antibody: 83496-1-PBS. Standard: Ag20135. Range: 0.313-40 ng/mL



Bilayer interferometry (BLI) kinetic assays of 83496-1-RR against Human MDC1 were performed. The affinity constant is 0.346 nM.