

For Research Use Only

# NCAM2 Recombinant antibody, PBS Only (Detector)

Catalog Number: 83494-4-PBS



## Basic Information

|  |  |   |
|--|--|---|
| <b>Catalog Number:</b><br>83494-4-PBS                      | <b>GenBank Accession Number:</b><br>BC052946         | <b>Purification Method:</b><br>Protein A purification |
| <b>Size:</b><br>100ug, Concentration: 1 mg/ml by Nanodrop; | <b>GeneID (NCBI):</b><br>4685                        | <b>CloneNo.:</b><br>240398D6                          |
| <b>Source:</b><br>Rabbit                                   | <b>UNIPROT ID:</b><br>O15394                         |   |
| <b>Isotype:</b><br>IgG                                     | <b>Full Name:</b><br>neural cell adhesion molecule 2 |   |
| <b>Immunogen Catalog Number:</b><br>AG4821                 | <b>Calculated MW:</b><br>93 kDa                      |   |

## Applications

**Tested Applications:**  
Cytometric bead array, Sandwich ELISA, Indirect ELISA, Sample test

**Species Specificity:**  
human

## Product Information

83494-4-PBS targets NCAM2 as part of a matched antibody pair:

MP00493-3: 83494-1-PBS capture and 83494-4-PBS detection (validated in Cytometric bead array, Sandwich ELISA)

Unconjugated rabbit recombinant monoclonal antibody in PBS only (BSA and azide free) storage buffer at a concentration of 1 mg/mL, ready for conjugation. Created using Proteintech's proprietary in-house recombinant technology. Recombinant production enables unrivalled batch-to-batch consistency, easy scale-up, and future security of supply.

This conjugation ready format makes antibodies ideal for use in many applications including: ELISAs, multiplex assays requiring matched pairs, mass cytometry, and multiplex imaging applications. Antibody use should be optimized by the end user for each application and assay.

## Storage

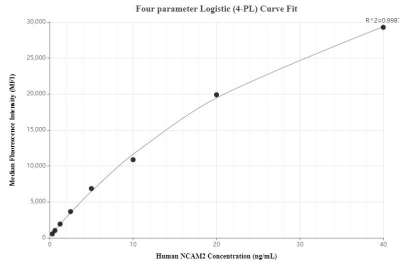
**Storage:**  
Store at -80°C.

**Storage Buffer:**  
PBS Only

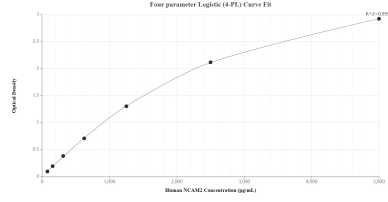
For technical support and original validation data for this product please contact:  
T: 1 (888) 4PTGLAB (1-888-478-4522) (toll free in USA), or 1(312) 455-8498 (outside USA)      E: [proteintech@ptglab.com](mailto:proteintech@ptglab.com)      W: [ptglab.com](http://ptglab.com)

**This product is exclusively available under Proteintech Group brand and is not available to purchase from any other manufacturer.**

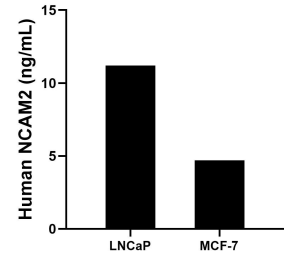
## Selected Validation Data



Cytometric bead array standard curve of MP00493-3, NCAM2 Recombinant Matched Antibody Pair, PBS Only. Capture antibody: 83494-1-PBS. Detection antibody: 83494-4-PBS. Standard: Ag4821. Range: 0.313-40 ng/mL



Sandwich ELISA standard curve of MP00493-3, Human NCAM2 Recombinant Matched Antibody Pair - PBS only. 83494-1-PBS was coated to a plate as the capture antibody and incubated with serial dilutions of standard Ag4821. 83494-4-PBS was HRP conjugated as the detection antibody. Range: 78.1-5000 pg/mL



The mean NCAM2 concentration was determined to be 11.2 ng/mL in LNCaP cell extract based on a 3.0 mg/mL extract load and 4.7 ng/mL in MCF-7 cell extract based on a 4.3 mg/mL extract load.