

For Research Use Only

HTRA2 Recombinant antibody

Catalog Number:83492-7-RR



Basic Information

Catalog Number: 83492-7-RR	GenBank Accession Number: BC000096	Purification Method: Protein A purification
Size: 100ul , Concentration: 1000 ug/ml by Nanodrop;	GeneID (NCBI): 27429	CloneNo.: 240496D1
Source: Rabbit	UNIPROT ID: O43464	Recommended Dilutions: WB 1:2000-1:10000 IF/ICC 1:125-1:500
Isotype: IgG	Full Name: HtrA serine peptidase 2	
Immunogen Catalog Number: AG8455	Calculated MW: 49 kDa	
	Observed MW: 36 kDa	

Applications

Tested Applications: WB, IF/ICC, FC (Intra), ELISA	Positive Controls: WB : HEK-293 cells, HeLa cells, MCF-7 cells, Raji cells, Jurkat cells, human heart tissue
Species Specificity: human	IF/ICC : HepG2 cells,

Background Information

HTRA2(High temperature requirement protein A2) is also named as OMI, PRSS25 and belongs to the peptidase S1B family. HTRA2 normally exists in the mitochondria, can cause MMP3 activation in the cytosol under a cell stress condition, which can ultimately lead to demise of dopaminergic neuronal cells(PMID: 22265821). It inhibits mitochondrial superoxide generation, stabilizes mitochondrial membrane potential, and prevents apoptosis at baseline and in response to extracellular inducers of mitochondrial stress(PMID: 18772386). This protein has 4 isoforms produced by alternative splicing.

Storage

Storage:
Store at -20°C. Stable for one year after shipment.
Storage Buffer:
PBS with 0.02% sodium azide and 50% glycerol pH 7.3.
Aliquoting is unnecessary for -20°C storage

*** 20ul sizes contain 0.1% BSA

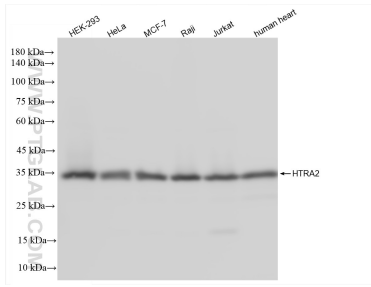
For technical support and original validation data for this product please contact:

T: 1 (888) 4PTGLAB (1-888-478-4522) (toll free in USA), or 1(312) 455-8498 (outside USA)

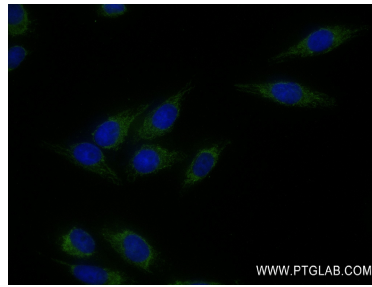
E: proteintech@ptglab.com
W: ptglab.com

This product is exclusively available under Proteintech Group brand and is not available to purchase from any other manufacturer.

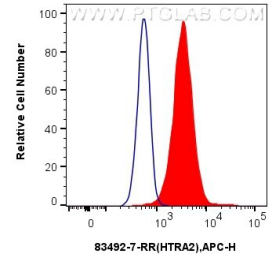
Selected Validation Data



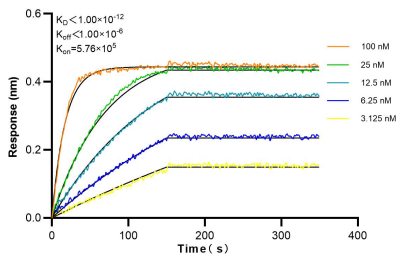
Various lysates were subjected to SDS PAGE followed by western blot with 83492-7-RR (HTRA2 antibody) at dilution of 1:5000 incubated at room temperature for 1.5 hours.



Immunofluorescent analysis of (4% PFA) fixed HepG2 cells using HTRA2 antibody (83492-7-RR, Clone: 240496D1) at dilution of 1:250 and CoraLite®488-Conjugated AffiniPure Goat Anti-Mouse IgG(H+L) (SA00013-1).



1x10⁶ HeLa cells were intracellularly stained with 0.25 ug HTRA2 Recombinant antibody (83492-7-RR, Clone:240496D1) and APC-Conjugated AffiniPure Goat Anti-Rabbit IgG(H+L)(red), or 0.25 ug Isotype Control (blue). Cells were fixed with 4% PFA and permeabilized with Flow Cytometry Perm Buffer (PF00011-C).



Bi-layer interferometry (BLI) kinetic assays of 83492-7-RR against Human HTRA2 were performed. The affinity constant is below 1 pM.