

For Research Use Only

NELF Recombinant antibody

Catalog Number: 83490-2-RR



Basic Information

Catalog Number: 83490-2-RR	GenBank Accession Number: BC016862	Purification Method: Protein A purification
Size: 100ul , Concentration: 1000 ug/ml by Nanodrop;	GeneID (NCBI): 26012	CloneNo.: 240482G1
Source: Rabbit	UNIPROT ID: Q6X4W1	Recommended Dilutions: WB 1:5000-1:50000
Isotype: IgG	Full Name: nasal embryonic LHRH factor	
Immunogen Catalog Number: AG34902	Calculated MW: 507 aa, 56 kDa	
	Observed MW: 54-60 kDa	

Applications

Tested Applications: WB, ELISA	Positive Controls: WB : COLO 320 cells, HeLa cells, HepG2 cells
Species Specificity: Human	

Background Information

NSMF, also named as NELF (Nasal embryonic LHRH factor), couples NMDA-sensitive glutamate receptor signaling to the nucleus and triggers long-lasting changes in the cytoarchitecture of dendrites and spine synapse processes. NELF plays a major role in promoter-proximal pausing, a widespread phenomenon during early transcription elongation.

Storage

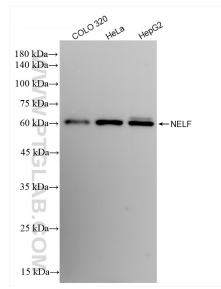
Storage:
Store at -20°C. Stable for one year after shipment.
Storage Buffer:
PBS with 0.02% sodium azide and 50% glycerol pH 7.3.
Aliquoting is unnecessary for -20°C storage

*** 20ul sizes contain 0.1% BSA

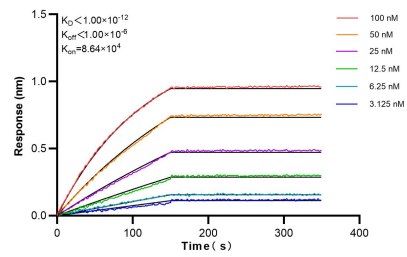
For technical support and original validation data for this product please contact:
T: 1 (888) 4PTGLAB (1-888-478-4522) (toll free in USA), or 1(312) 455-8498 (outside USA)
E: proteintech@ptglab.com
W: ptglab.com

This product is exclusively available under Proteintech Group brand and is not available to purchase from any other manufacturer.

Selected Validation Data



Various lysates were subjected to SDS PAGE followed by western blot with 83490-2-RR (NELF antibody) at dilution of 1:10000 incubated at room temperature for 1.5 hours.



Biolayer interferometry (BLI) kinetic assays of 83490-2-RR against Human NELF were performed. The affinity constant is below 1 pM.