

For Research Use Only

NELF Recombinant antibody, PBS Only (Detector)

Catalog Number: 83490-2-PBS



Basic Information

Catalog Number: 83490-2-PBS	GenBank Accession Number: BC016862	Purification Method: Protein A purification
Size: 100ug, Concentration: 1 mg/ml by Nanodrop;	GeneID (NCBI): 26012	CloneNo.: 240482G1
Source: Rabbit	UNIPROT ID: Q6X4W1	
Isotype: IgG	Full Name: nasal embryonic LHRH factor	
Immunogen Catalog Number: AG34902	Calculated MW: 507 aa, 56 kDa	

Applications

Tested Applications:
WB, Cytometric bead array, Sandwich ELISA, Indirect ELISA, Sample test

Species Specificity:
human

Product Information

83490-2-PBS targets NELF as part of a matched antibody pair.

MP00490-1: 83490-1-PBS capture and 83490-2-PBS detection (validated in Cytometric bead array, Sandwich ELISA)

MP00490-2: 83490-3-PBS capture and 83490-2-PBS detection (validated in Cytometric bead array)

Unconjugated rabbit recombinant monoclonal antibody in PBS only (BSA and azide free) storage buffer at a concentration of 1 mg/mL, ready for conjugation. Created using Proteintech's proprietary in-house recombinant technology. Recombinant production enables unrivalled batch-to-batch consistency, easy scale-up, and future security of supply.

This conjugation ready format makes antibodies ideal for use in many applications including: ELISAs, multiplex assays requiring matched pairs, mass cytometry, and multiplex imaging applications. Antibody use should be optimized by the end user for each application and assay.

Storage

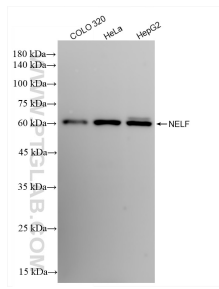
Storage:
Store at -80°C.

Storage Buffer:
PBS Only

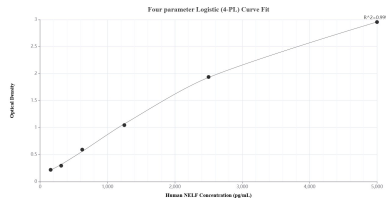
For technical support and original validation data for this product please contact:
T: 1 (888) 4PTGLAB (1-888-478-4522) (toll free in USA), or 1(312) 455-8498 (outside USA) E: proteintech@ptglab.com
W: ptglab.com

This product is exclusively available under Proteintech Group brand and is not available to purchase from any other manufacturer.

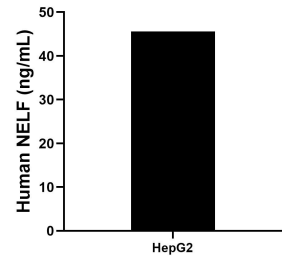
Selected Validation Data



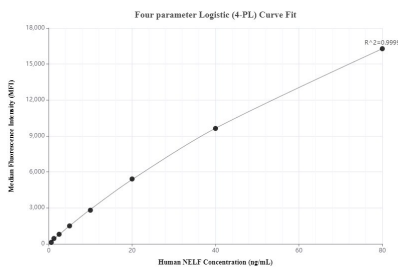
Various lysates were subjected to SDS PAGE followed by western blot with 83490-2-RR (NELF antibody) at dilution of 1:10000 incubated at room temperature for 1.5 hours. This data was developed using the same antibody clone with 83490-2-PBS in a different storage buffer formulation.



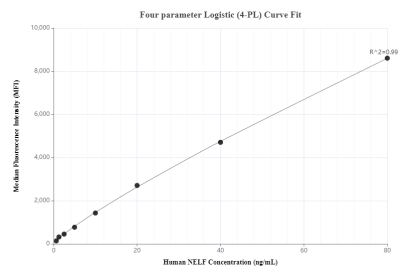
Sandwich ELISA standard curve of MP00490-1, Human NELF Recombinant Matched Antibody Pair - PBS only. 83490-1-PBS was coated to a plate as the capture antibody and incubated with serial dilutions of standard Ag34902. 83490-2-PBS was HRP conjugated as the detection antibody. Range: 156-5000 pg/mL.



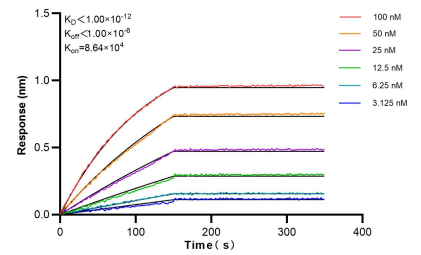
The mean NELF concentration was determined to be 45.6 ng/mL in HepG2 cell extract based on a 2.3 mg/mL extract load.



Cytometric bead array standard curve of MP00490-1, NELF Recombinant Matched Antibody Pair, PBS Only. Capture antibody: 83490-1-PBS. Detection antibody: 83490-2-PBS. Standard: Ag34902. Range: 0.625-80 ng/mL.



Cytometric bead array standard curve of MP00490-2, NELF Recombinant Matched Antibody Pair, PBS Only. Capture antibody: 83490-3-PBS. Detection antibody: 83490-2-PBS. Standard: Ag34902. Range: 0.625-80 ng/mL.



Bi-layer interferometry (BLI) kinetic assays of 83490-2-RR against Human NELF were performed. The affinity constant is below 1 pM.