

For Research Use Only

STEAP3 Recombinant antibody

Catalog Number: 83484-2-RR



Basic Information

Catalog Number: 83484-2-RR	GenBank Accession Number: BC042150	Purification Method: Protein A purification
Size: 100ul , Concentration: 400 ug/ml by Nanodrop;	GeneID (NCBI): 55240	CloneNo.: 1N5
Source: Rabbit	UNIPROT ID: Q658P3	Recommended Dilutions: WB 1:1000-1:4000
Isotype: IgG	Full Name: STEAP family member 3	
Immunogen Catalog Number: AG29528	Calculated MW: 488 aa, 55 kDa	
	Observed MW: 55 kDa	

Applications

Tested Applications: WB, FC (Intra), ELISA	Positive Controls: WB : HeLa cells, HepG2 cells, PC-12 cells, C6 cells
Species Specificity: human, rat	

Background Information

STEAP3 (Six-Transmembrane Epithelial Antigen of Prostate 3) is also named as TSAP6, Dudulin-2 and pHyde, and belongs to the STEAP family. STEAP3 is a member of the STEAP family and is composed of a six-transmembrane domain at the COOH-terminal domain and a cytoplasmic N-terminal oxidoreductase domain, which is essential for iron and copper uptake (PMID:16227996). STEAP3 contains a functional p53-binding site in its promoter and can be upregulated following p53 activation to enhance cell death in myeloid leukemia cell line and breast cancer cells (PMID: 18617898). By interacting with Nix, a pro-apoptotic Bcl-2 family member, and Myt1 kinase, a negative regulator of the G2/M transition, STEAP3 overexpression promotes apoptosis and inhibits G2/M transition in cell cycle progression (PMID: 12606722, PMID: 10504341).

Storage

Storage:
Store at -20°C. Stable for one year after shipment.
Storage Buffer:
PBS with 0.02% sodium azide and 50% glycerol pH 7.3.
Aliquoting is unnecessary for -20°C storage

*** 20ul sizes contain 0.1% BSA

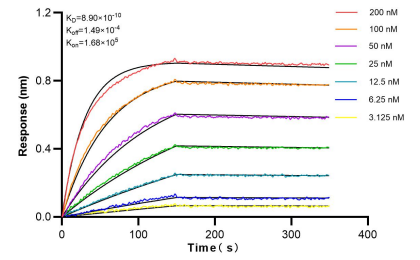
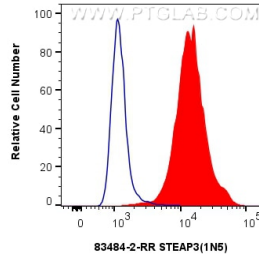
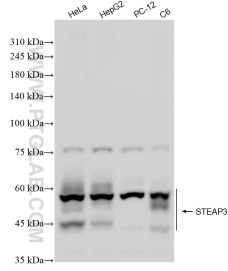
For technical support and original validation data for this product please contact:

T: 1 (888) 4PTGLAB (1-888-478-4522) (toll free in USA), or 1(312) 455-8498 (outside USA)

E: proteintech@ptglab.com
W: ptglab.com

This product is exclusively available under Proteintech Group brand and is not available to purchase from any other manufacturer.

Selected Validation Data



Various lysates were subjected to SDS PAGE followed by western blot with 83484-2-RR (STEAP3 antibody) at dilution of 1:2000 incubated at room temperature for 1.5 hours.

1×10^6 HeLa cells were intracellularly stained with 0.25 μ g STEAP3 Recombinant antibody (83484-2-RR, Clone:1N5) and CoraLite®488-Conjugated Goat Anti-Rabbit IgG(H+L) (SA00013-2)(red), or 0.25 μ g Rabbit IgG Isotype Control Recombinant Antibody (98136-1-RR, Clone: 240953C9) (blue). Cells were fixed with 4% PFA and permeabilized with Flow Cytometry Perm Buffer (PF00011-C).

Biacore interferometry (BLI) kinetic assays of 83484-2-RR against Human STEAP3 were performed. The affinity constant is 0.89 nM.